

TCHP Polyclonal Antibody
Purified Rabbit Polyclonal Antibody (Pab)
Catalog # AP58379**Specification**

TCHP Polyclonal Antibody - Product Information

Application	IHC-P, IHC-F, IF, E
Primary Accession	Q9BT92
Reactivity	Rat, Pig, Dog, Bovine
Host	Rabbit
Clonality	Polyclonal
Calculated MW	55 KDa
Physical State	Liquid
Immunogen	KLH conjugated synthetic peptide derived from human TCHP
Epitope Specificity	401-498/498
Isotype	IgG
Purity	
affinity purified by Protein A	
Buffer	0.01M TBS (pH7.4) with 1% BSA, 0.02% Proclin300 and 50% Glycerol.
SUBCELLULAR LOCATION	Cytoplasm, cytoskeleton. Cytoplasm. Cell membrane. Mitochondrion.
SIMILARITY	Belongs to the TCHP family.
SUBUNIT	Interacts specifically with keratin proteins including, KRT5, KRT6A, KRT8, KRT14, KRT16 and KRT18.
Important Note	This product as supplied is intended for research use only, not for use in human, therapeutic or diagnostic applications.

Background Descriptions

A tumour suppressor protein which may act as a 'capping' or 'branching' protein for keratin filaments in the cell periphery.

TCHP Polyclonal Antibody - Additional Information

Gene ID 84260

Other Names

Trichoplein keratin filament-binding protein, Protein TCHP, Mitochondrial protein with oncostatic activity, Mitostatin, Tumor suppressor protein, TCHP {ECO:0000312|EMBL:AAH04285.1}

Target/Specificity

Expressed at high levels in normal urothelial and breast epithelial cells. Also expressed in the smooth muscle and endothelial cells. Reduced expression seen in advanced bladder and breast carcinomas (at protein level). Ubiquitous. Expressed at highest levels in the heart, skeletal muscle, kidney, liver and testis.

Dilution

IHC-P ~ ~ N/A
IHC-F ~ ~ N/A
IF ~ ~ 1:50 ~ 200
E ~ ~ N/A

Format

0.01M TBS(pH7.4), 0.09% (W/V) sodium azide and 50% Glyce

Storage

Store at -20 °C for one year. Avoid repeated freeze/thaw cycles. When reconstituted in sterile pH 7.4 0.01M PBS or diluent of antibody the antibody is stable for at least two weeks at 2-4 °C.

TCHP Polyclonal Antibody - Protein Information

Name TCHP {ECO:0000312|EMBL:AAH04285.1}

Function

Tumor suppressor which has the ability to inhibit cell growth and be pro-apoptotic during cell stress. Inhibits cell growth in bladder and prostate cancer cells by a down-regulation of HSPB1 by inhibiting its phosphorylation. May act as a 'capping' or 'branching' protein for keratin filaments in the cell periphery. May regulate K8/K18 filament and desmosome organization mainly at the apical or peripheral regions of simple epithelial cells (PubMed:15731013, PubMed:18931701). Is a negative regulator of ciliogenesis (PubMed:25270598).

Cellular Location

Cytoplasm, cytoskeleton. Cytoplasm Cell membrane. Mitochondrion. Cell junction, desmosome. Cytoplasm, cytoskeleton, microtubule organizing center, centrosome

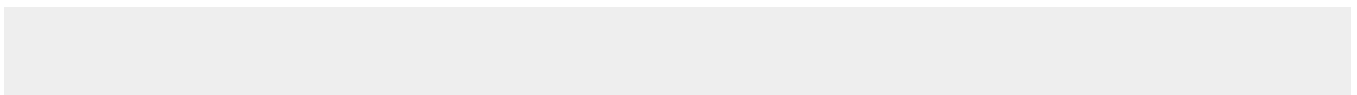
Tissue Location

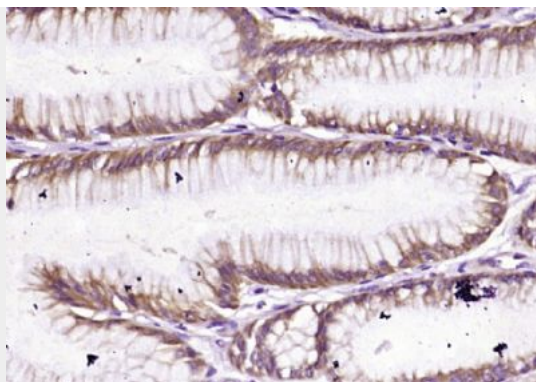
Expressed at high levels in normal urothelial and breast epithelial cells. Also expressed in the smooth muscle and endothelial cells. Reduced expression seen in advanced bladder and breast carcinomas (at protein level). Ubiquitous. Expressed at highest levels in the heart, skeletal muscle, kidney, liver and testis

TCHP Polyclonal Antibody - Protocols

Provided below are standard protocols that you may find useful for product applications.

- [Western Blot](#)
- [Blocking Peptides](#)
- [Dot Blot](#)
- [Immunohistochemistry](#)
- [Immunofluorescence](#)
- [Immunoprecipitation](#)
- [Flow Cytometry](#)
- [Cell Culture](#)

TCHP Polyclonal Antibody - Images



Paraformaldehyde-fixed, paraffin embedded (human gastric carcinoma); Antigen retrieval by boiling in sodium citrate buffer (pH6.0) for 15min; Block endogenous peroxidase by 3% hydrogen peroxide for 20 minutes; Blocking buffer (normal goat serum) at 37°C for 30min; Antibody incubation with (TCHP) Polyclonal Antibody, Unconjugated (bs-6113R) at 1:400 overnight at 4°C, followed by operating according to SP Kit(Rabbit) (sp-0023) instructions and DAB staining.