

RASGEF1A Polyclonal Antibody
Purified Rabbit Polyclonal Antibody (Pab)
Catalog # AP58387**Specification****RASGEF1A Polyclonal Antibody - Product Information**

Application	IHC-P, IHC-F, IF, E
Primary Accession	Q8N9B8
Reactivity	Rat, Pig, Dog, Bovine
Host	Rabbit
Clonality	Polyclonal
Calculated MW	53 KDa
Physical State	Liquid
Immunogen	KLH conjugated synthetic peptide derived from human RASGEF1A
Epitope Specificity	301-200/481
Isotype	IgG
Purity	
affinity purified by Protein A	
Buffer	0.01M TBS (pH7.4) with 1% BSA, 0.02% Proclin300 and 50% Glycerol.
SIMILARITY	Contains 1 N-terminal Ras-GEF domain. Contains 1 Ras-GEF domain.
Important Note	This product as supplied is intended for research use only, not for use in human, therapeutic or diagnostic applications.

Background Descriptions

Guanine nucleotide exchange factor (GEF) with specificity for RAP2A, KRAS, HRAS, and NRAS (in vitro). Plays a role in cell migration.

RASGEF1A Polyclonal Antibody - Additional Information

Gene ID 221002

Other Names

Ras-GEF domain-containing family member 1A, RASGEF1A

Target/Specificity

Detected in brain and spinal cord. Highly expressed in a number of intrahepatic cholangiocarcinoma tissue biopsies.

Dilution

IHC-P ~ ~ N/A
IHC-F ~ ~ N/A
IF ~ ~ 1:50 ~ 200
E ~ ~ N/A

Format

0.01M TBS(pH7.4), 0.09% (W/V) sodium azide and 50% Glyce

Storage

Store at -20 °C for one year. Avoid repeated freeze/thaw cycles. When reconstituted in sterile pH 7.4 0.01M PBS or diluent of antibody the antibody is stable for at least two weeks at 2-4 °C.

RASGEF1A Polyclonal Antibody - Protein Information

Name RASGEF1A

Function

Guanine nucleotide exchange factor (GEF) with specificity for RAP2A, KRAS, HRAS, and NRAS (in vitro). Plays a role in cell migration.

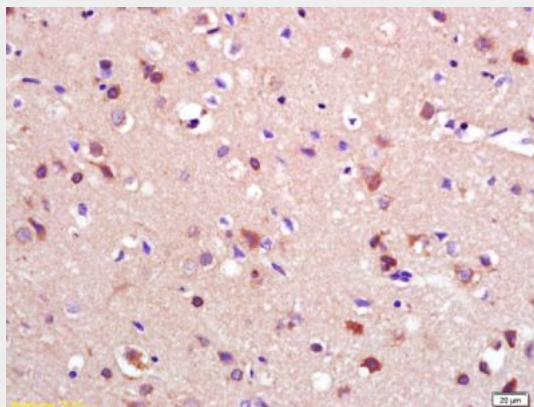
Tissue Location

Detected in brain and spinal cord. Highly expressed in a number of intrahepatic cholangiocarcinoma tissue biopsies

RASGEF1A Polyclonal Antibody - Protocols

Provided below are standard protocols that you may find useful for product applications.

- [Western Blot](#)
- [Blocking Peptides](#)
- [Dot Blot](#)
- [Immunohistochemistry](#)
- [Immunofluorescence](#)
- [Immunoprecipitation](#)
- [Flow Cytometry](#)
- [Cell Culture](#)

RASGEF1A Polyclonal Antibody - Images

Tissue/cell: rat brain tissue; 4% Paraformaldehyde-fixed and paraffin-embedded;

Antigen retrieval: citrate buffer (0.01M, pH 6.0), Boiling bathing for 15min; Block endogenous peroxidase by 3% Hydrogen peroxide for 30min; Blocking buffer (normal goat serum,C-0005) at 37°C for 20 min;

Incubation: Anti-RASGEF1A Polyclonal Antibody, Unconjugated(bs-6156R) 1:200, overnight at 4°C, followed by conjugation to the secondary antibody(SP-0023) and DAB(C-0010) staining