

RAB8B Polyclonal Antibody
Purified Rabbit Polyclonal Antibody (Pab)
Catalog # AP58389**Specification****RAB8B Polyclonal Antibody - Product Information**

Application	WB, IHC-P, IHC-F, IF, E
Primary Accession	Q92930
Reactivity	Rat, Dog
Host	Rabbit
Clonality	Polyclonal
Calculated MW	23 KDa
Physical State	Liquid
Immunogen	KLH conjugated synthetic peptide derived from human RAB8B
Epitope Specificity	21-120/207
Isotype	IgG
Purity	
affinity purified by Protein A	
Buffer	0.01M TBS (pH7.4) with 1% BSA, 0.02% Proclin300 and 50% Glycerol.
SUBCELLULAR LOCATION	Cell membrane; Lipid-anchor; Cytoplasmic side
SIMILARITY	Belongs to the small GTPase superfamily. Rab family.
SUBUNIT	Interacts with OTOF and PEX5R (By similarity). Interacts with RAB3IP. Interacts with VIM AND CDH1 (By similarity). Associated with actin, delta-catenin and alpha and beta tubulins.
Important Note	This product as supplied is intended for research use only, not for use in human, therapeutic or diagnostic applications.

Background Descriptions

RAB proteins, like RAB8B, are low molecular mass monomeric GTPases that localize on the cytoplasmic surfaces of distinct membrane-bound organelles. RAB proteins function in intracellular vesicle transport by aiding in the docking and/or fusion of vesicles with their target membranes

RAB8B Polyclonal Antibody - Additional Information**Gene ID** 51762**Other Names**

Ras-related protein Rab-8B, RAB8B

Dilution

WB~~1:1000<br \>IHC-P~~N/A<br \><span class

="dilution_IHC-F">IHC-F~N/A<br \><span class
="dilution_IF">IF~1:50~200<br \>E~N/A

Storage

Store at -20 °C for one year. Avoid repeated freeze/thaw cycles. When reconstituted in sterile pH 7.4 0.01M PBS or diluent of antibody the antibody is stable for at least two weeks at 2-4 °C.

RAB8B Polyclonal Antibody - Protein Information

Name RAB8B ([HGNC:30273](#))

Function

The small GTPases Rab are key regulators of intracellular membrane trafficking, from the formation of transport vesicles to their fusion with membranes. Rabs cycle between an inactive GDP-bound form and an active GTP-bound form that is able to recruit to membranes different sets of downstream effectors directly responsible for vesicle formation, movement, tethering and fusion (By similarity). RAB8B may be involved in polarized vesicular trafficking and neurotransmitter release (Probable). May participate in cell junction dynamics in Sertoli cells (By similarity). May also participate in the export of a subset of neosynthesized proteins through a Rab8-Rab10-Rab11-dependent endosomal export route (PubMed:32344433).

Cellular Location

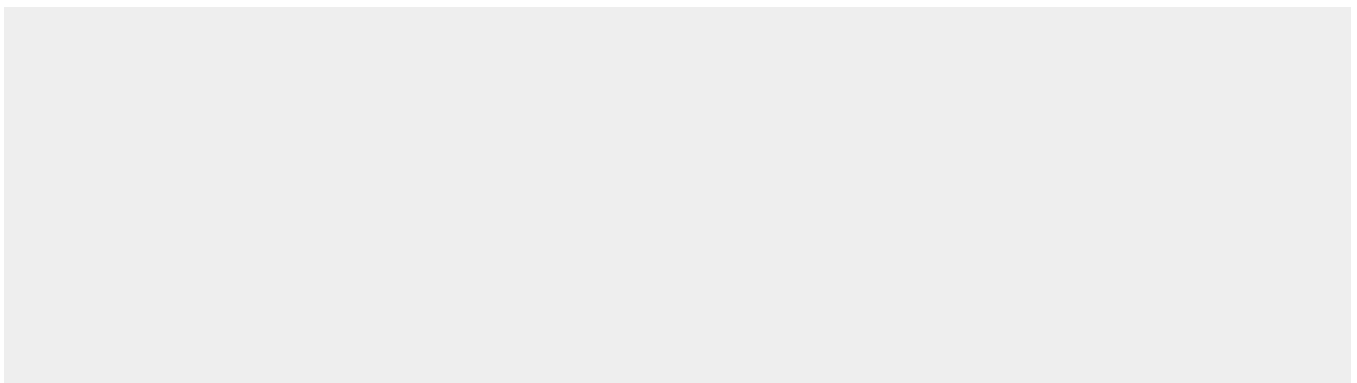
Cell membrane; Lipid-anchor; Cytoplasmic side. Cytoplasmic vesicle, phagosome. Cytoplasmic vesicle, phagosome membrane; Lipid-anchor; Cytoplasmic side. Endosome membrane. Note=Recruited to phagosomes containing S.aureus or M.tuberculosis. Colocalized with MICAL1, GRAF1/ARHGAP26 and GRAF2/ARHGAP10 on endosomal tubules (PubMed:32344433)

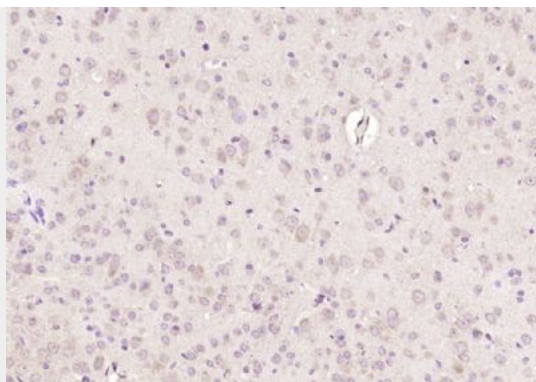
RAB8B Polyclonal Antibody - Protocols

Provided below are standard protocols that you may find useful for product applications.

- [Western Blot](#)
- [Blocking Peptides](#)
- [Dot Blot](#)
- [Immunohistochemistry](#)
- [Immunofluorescence](#)
- [Immunoprecipitation](#)
- [Flow Cytometry](#)
- [Cell Culture](#)

RAB8B Polyclonal Antibody - Images





Paraformaldehyde-fixed, paraffin embedded (mouse brain); Antigen retrieval by boiling in sodium citrate buffer (pH6.0) for 15min; Block endogenous peroxidase by 3% hydrogen peroxide for 20 minutes; Blocking buffer (normal goat serum) at 37°C for 30min; Antibody incubation with (RAB8B) Polyclonal Antibody, Unconjugated (bs-6168R) at 1:200 overnight at 4°C, followed by operating according to SP Kit(Rabbit) (sp-0023) instructions and DAB staining.