

**ENAM Antibody (C-term)**  
**Affinity Purified Rabbit Polyclonal Antibody (Pab)**  
**Catalog # AP5838b****Specification**

---

**ENAM Antibody (C-term) - Product Information**

Application	WB, IHC-P, FC,E
Primary Accession	<a href="#">Q9NRM1</a>
Other Accession	<a href="#">NP_114095.2</a>
Reactivity	Human
Host	Rabbit
Clonality	Polyclonal
Isotype	Rabbit IgG
Calculated MW	128785
Antigen Region	1097-1126

**ENAM Antibody (C-term) - Additional Information****Gene ID** 10117**Other Names**

Enamelin, ENAM

**Target/Specificity**

This ENAM antibody is generated from rabbits immunized with a KLH conjugated synthetic peptide between 1097-1126 amino acids from the C-terminal region of human ENAM.

**Dilution**

WB~~1:1000  
IHC-P~~1:50~100  
FC~~1:10~50

**Format**

Purified polyclonal antibody supplied in PBS with 0.09% (W/V) sodium azide. This antibody is prepared by Saturated Ammonium Sulfate (SAS) precipitation followed by dialysis against PBS.

**Storage**

Maintain refrigerated at 2-8°C for up to 2 weeks. For long term storage store at -20°C in small aliquots to prevent freeze-thaw cycles.

**Precautions**

ENAM Antibody (C-term) is for research use only and not for use in diagnostic or therapeutic procedures.

**ENAM Antibody (C-term) - Protein Information****Name** ENAM

**Function** Involved in the mineralization and structural organization of enamel. Involved in the extension of enamel during the secretory stage of dental enamel formation.

**Cellular Location**

Secreted, extracellular space, extracellular matrix {ECO:0000250|UniProtKB:O97939}

**Tissue Location**

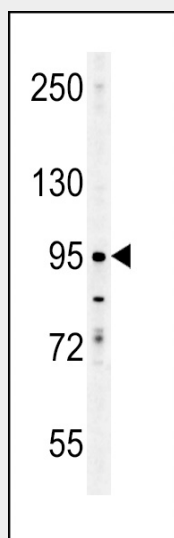
Expressed in tooth particularly in odontoblast, ameloblast and cementoblast.

**ENAM Antibody (C-term) - Protocols**

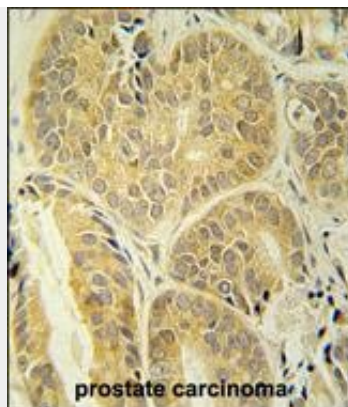
Provided below are standard protocols that you may find useful for product applications.

- [Western Blot](#)
- [Blocking Peptides](#)
- [Dot Blot](#)
- [Immunohistochemistry](#)
- [Immunofluorescence](#)
- [Immunoprecipitation](#)
- [Flow Cytometry](#)
- [Cell Culture](#)

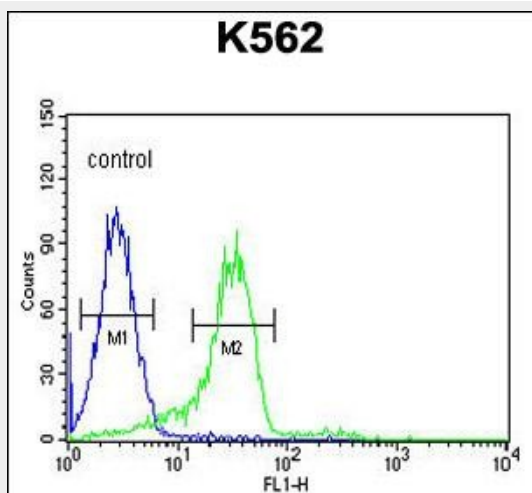
**ENAM Antibody (C-term) - Images**



ENAM Antibody (C-term) (Cat. #AP5838b) western blot analysis in K562 cell line lysates (35ug/lane). This demonstrates the ENAM antibody detected the ENAM protein (arrow).



ENAM antibody(C-term) (Cat. #AP5838b) immunohistochemistry analysis in formalin fixed and paraffin embedded human prostate carcinoma followed by peroxidase conjugation of the secondary antibody and DAB staining. This data demonstrates the use of the ENAM antibody(C-term) for immunohistochemistry. Clinical relevance has not been evaluated.



ENAM Antibody (C-term) (Cat. #AP5838b) flow cytometric analysis of K562 cells (right histogram) compared to a negative control cell (left histogram).FITC-conjugated goat-anti-rabbit secondary antibodies were used for the analysis.

#### ENAM Antibody (C-term) - Citations

- [TNF- \$\alpha\$ -induced IL-6 and MMP-9 expression in immortalized ameloblastoma cell line established by hTERT.](#)