

GCH1 Antibody (N-term)
Affinity Purified Rabbit Polyclonal Antibody (Pab)
Catalog # AP5839A**Specification**

GCH1 Antibody (N-term) - Product Information

Application	WB, IHC-P,E
Primary Accession	P30793
Other Accession	NP_000152.1 , NP_001019195.1 , NP_001019242.1 , NP_001019241.1
Reactivity	Human
Host	Rabbit
Clonality	Polyclonal
Isotype	Rabbit IgG
Calculated MW	27903
Antigen Region	39-67

GCH1 Antibody (N-term) - Additional Information**Gene ID** 2643**Other Names**

GTP cyclohydrolase 1, GTP cyclohydrolase I, GTP-CH-I, GCH1, DYT5, GCH

Target/Specificity

This GCH1 antibody is generated from rabbits immunized with a KLH conjugated synthetic peptide between 39-67 amino acids from the N-terminal region of human GCH1.

Dilution

WB~~1:1000

IHC-P~~1:50~100

E~~Use at an assay dependent concentration.

Format

Purified polyclonal antibody supplied in PBS with 0.09% (W/V) sodium azide. This antibody is purified through a protein A column, followed by peptide affinity purification.

Storage

Maintain refrigerated at 2-8°C for up to 2 weeks. For long term storage store at -20°C in small aliquots to prevent freeze-thaw cycles.

Precautions

GCH1 Antibody (N-term) is for research use only and not for use in diagnostic or therapeutic procedures.

GCH1 Antibody (N-term) - Protein Information**Name** GCH1

Synonyms DYT5, GCH

Function Positively regulates nitric oxide synthesis in umbilical vein endothelial cells (HUVECs). May be involved in dopamine synthesis. May modify pain sensitivity and persistence. Isoform GCH-1 is the functional enzyme, the potential function of the enzymatically inactive isoforms remains unknown.

Cellular Location

Cytoplasm. Nucleus

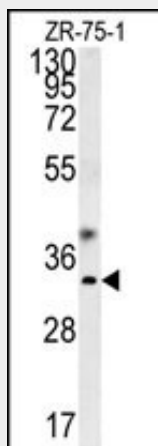
Tissue Location

In epidermis, expressed predominantly in basal undifferentiated keratinocytes and in some but not all melanocytes (at protein level).

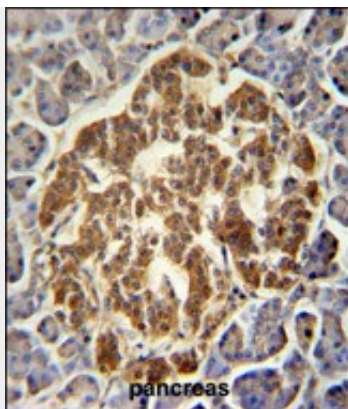
GCH1 Antibody (N-term) - Protocols

Provided below are standard protocols that you may find useful for product applications.

- [Western Blot](#)
- [Blocking Peptides](#)
- [Dot Blot](#)
- [Immunohistochemistry](#)
- [Immunofluorescence](#)
- [Immunoprecipitation](#)
- [Flow Cytometry](#)
- [Cell Culture](#)

GCH1 Antibody (N-term) - Images

GCH1 Antibody (N-term) (Cat. #AP5839a) western blot analysis in ZR-75-1 cell line lysates (35ug/lane). This demonstrates the GCH1 antibody detected the GCH1 protein (arrow).



GCH1 Antibody (N-term) (Cat. #AP5839a) immunohistochemistry analysis in formalin fixed and paraffin embedded human pancreas followed by peroxidase conjugation of the secondary antibody and DAB staining. This data demonstrates the use of the GCH1 Antibody (N-term) for immunohistochemistry. Clinical relevance has not been evaluated.