

**PRR11 Polyclonal Antibody**  
**Purified Rabbit Polyclonal Antibody (Pab)**  
**Catalog # AP58400****Specification****PRR11 Polyclonal Antibody - Product Information**

Application	IHC-P, IHC-F, IF, E
Primary Accession	<a href="#">Q96HE9</a>
Reactivity	Rat, Pig, Bovine
Host	Rabbit
Clonality	Polyclonal
Calculated MW	40 KDa
Physical State	Liquid
Immunogen	KLH conjugated synthetic peptide derived from human PRR11
Epitope Specificity	201-300/360
Isotype	IgG
<b>Purity</b>	
affinity purified by Protein A	
Buffer	0.01M TBS (pH7.4) with 1% BSA, 0.02% Proclin300 and 50% Glycerol.
SUBCELLULAR LOCATION	Cytoplasm.
Post-translational modifications	Ubiquitinated (Probable). Rapidly degraded by the proteasome; degradation may involve FBXW7-specific phosphorylated phosphodegron motifs.
Important Note	This product as supplied is intended for research use only, not for use in human, therapeutic or diagnostic applications.

**Background Descriptions**

PRR11 (proline rich 11) is a 360 amino acid protein that is encoded by a gene located on human chromosome 17. Human chromosome 17 comprises over 2.5% of the human genome and encodes over 1,200 genes. Two key tumor suppressor genes are associated with chromosome 17, namely, p53 and BRCA1. Tumor suppressor p53 is necessary for maintenance of cellular genetic integrity by moderating cell fate through DNA repair versus cell death. Malfunction or loss of p53 expression is associated with malignant cell growth and Li-Fraumeni syndrome. Like p53, BRCA1 is directly involved in DNA repair, though specifically it is recognized as a genetic determinant of early onset breast cancer and predisposition to cancers of the ovary, colon, prostate gland and fallopian tubes.

**PRR11 Polyclonal Antibody - Additional Information****Gene ID** 55771**Other Names**

Proline-rich protein 11, PRR11

**Dilution**

<span class = "dilution\_IHC-P">IHC-P~~N/A</span><br \><span class  
= "dilution\_IHC-F">IHC-F~~N/A</span><br \><span class  
= "dilution\_IF">IF~~1:50~200</span><br \><span class = "dilution\_E">E~~N/A</span>>

**Format**

0.01M TBS(pH7.4), 0.09% (W/V) sodium azide and 50% Glyce

**Storage**

Store at -20 °C for one year. Avoid repeated freeze/thaw cycles. When reconstituted in sterile pH 7.4 0.01M PBS or diluent of antibody the antibody is stable for at least two weeks at 2-4 °C.

**PRR11 Polyclonal Antibody - Protein Information**

**Name** PRR11

**Function**

Plays a critical role in cell cycle progression.

**Cellular Location**

Cytoplasm. Nucleus

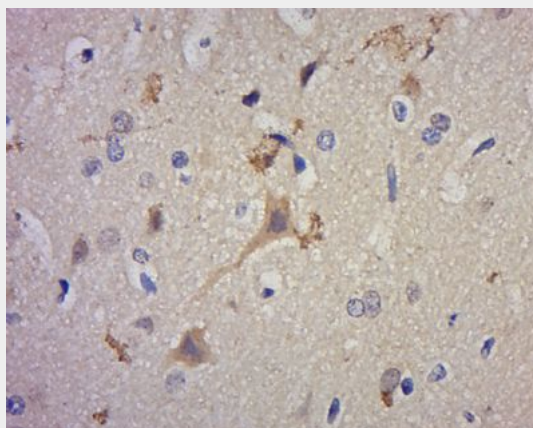
**Tissue Location**

Ubiquitously expressed.

**PRR11 Polyclonal Antibody - Protocols**

Provided below are standard protocols that you may find useful for product applications.

- [Western Blot](#)
- [Blocking Peptides](#)
- [Dot Blot](#)
- [Immunohistochemistry](#)
- [Immunofluorescence](#)
- [Immunoprecipitation](#)
- [Flow Cytometry](#)
- [Cell Culture](#)

**PRR11 Polyclonal Antibody - Images**

Paraformaldehyde-fixed, paraffin embedded (Mouse brain); Antigen retrieval by boiling in sodium citrate buffer (pH6.0) for 15min; Block endogenous peroxidase by 3% hydrogen peroxide for 20 minutes; Blocking buffer (normal goat serum) at 37°C for 30min; Antibody incubation with (Proline rich protein 11 ) Polyclonal Antibody, Unconjugated (bs-6237R) at 1:400 overnight at 4°C, followed by a conjugated secondary antibody (sp-0023) for 20 minutes and DAB staining.