

LCMT1 Polyclonal Antibody
Purified Rabbit Polyclonal Antibody (Pab)
Catalog # AP58404**Specification****LCMT1 Polyclonal Antibody - Product Information**

Application	WB, IHC-P, IHC-F, IF, E
Primary Accession	O9UIC8
Reactivity	Rat
Host	Rabbit
Clonality	Polyclonal
Calculated MW	38 KDa
Physical State	Liquid
Immunogen	KLH conjugated synthetic peptide derived from human LCMT1
Epitope Specificity	45-150/334
Isotype	IgG
Purity	
affinity purified by Protein A	
Buffer	0.01M TBS (pH7.4) with 1% BSA, 0.02% Proclin300 and 50% Glycerol.
SIMILARITY	Belongs to the methyltransferase superfamily. LCMT family.
Important Note	This product as supplied is intended for research use only, not for use in human, therapeutic or diagnostic applications.

Background Descriptions

LCMT1 catalyzes the methylation of the carboxyl group of the C-terminal leucine residue (Ile309) of the catalytic subunit of protein phosphatase-2A (PPP2CA; MIM 176915)

LCMT1 Polyclonal Antibody - Additional Information

Gene ID 51451

Other Names

Leucine carboxyl methyltransferase 1, 2.1.1.233, Protein-leucine O-methyltransferase, [Phosphatase 2A protein]-leucine-carboxy methyltransferase 1, LCMT1, LCMT

Dilution

dilution_WB WB ~ 1:1000
dilution_IHC-P IHC-P ~ N/A
dilution_IHC-F IHC-F ~ N/A
dilution_IF IF ~ 1:50 ~ 200
dilution_E E ~ N/A

Format

0.01M TBS(pH7.4), 0.09% (W/V) sodium azide and 50% Glyce

Storage

Store at -20 °C for one year. Avoid repeated freeze/thaw cycles. When reconstituted in sterile pH 7.4 0.01M PBS or diluent of antibody the antibody is stable for at least two weeks at 2-4 °C.

LCMT1 Polyclonal Antibody - Protein Information

Name LCMT1

Synonyms LCMT

Function

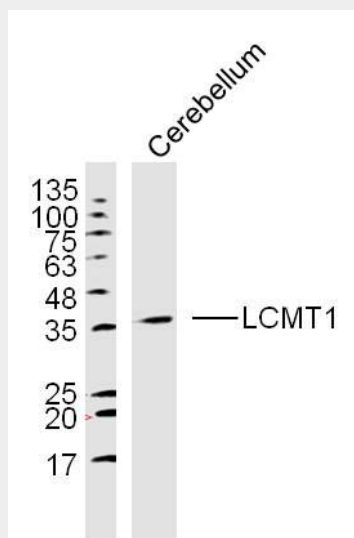
Methylates the carboxyl group of the C-terminal leucine residue of protein phosphatase 2A catalytic subunits to form alpha- leucine ester residues.

LCMT1 Polyclonal Antibody - Protocols

Provided below are standard protocols that you may find useful for product applications.

- [Western Blot](#)
- [Blocking Peptides](#)
- [Dot Blot](#)
- [Immunohistochemistry](#)
- [Immunofluorescence](#)
- [Immunoprecipitation](#)
- [Flow Cytometry](#)
- [Cell Culture](#)

LCMT1 Polyclonal Antibody - Images



Sample: Cerebellum (Mouse) Lysate at 40 ug
Primary: Anti-LCMT1 (bs-6249R) at 1/300 dilution
Secondary: IRDye800CW Goat Anti-Rabbit IgG at 1/20000 dilution
Predicted band size: 38 kD
Observed band size: 38 kD