

**ACPT Polyclonal Antibody**  
**Purified Rabbit Polyclonal Antibody (Pab)**  
**Catalog # AP58412****Specification**

---

**ACPT Polyclonal Antibody - Product Information**

Application	FC
Primary Accession	<a href="#">Q9BZG2</a>
Reactivity	Rat, Dog
Host	Rabbit
Clonality	Polyclonal
Calculated MW	46090

**ACPT Polyclonal Antibody - Additional Information****Gene ID** 93650**Other Names**

Testicular acid phosphatase, 3.1.3.2, Acid phosphatase 4 {ECO:0000312|HGNC:HGNC:14376}, ACP4 (<a href="http://www.genenames.org/cgi-bin/gene\_symbol\_report?hgnc\_id=14376" target="\_blank">HGNC:14376</a>)

**Format**

0.01M TBS(pH7.4), 0.09% (W/V) sodium azide and 50% Glyce

**Storage**

Store at -20 °C for one year. Avoid repeated freeze/thaw cycles. When reconstituted in sterile pH 7.4 0.01M PBS or diluent of antibody the antibody is stable for at least two weeks at 2-4 °C.

**ACPT Polyclonal Antibody - Protein Information****Name** ACP4 ([HGNC:14376](#))**Function**

May dephosphorylate receptor tyrosine-protein kinase ERBB4 and inhibits its ligand-induced proteolytic cleavage (PubMed:<a href="http://www.uniprot.org/citations/15219672" target="\_blank">15219672</a>). May play a role in odontogenesis (PubMed:<a href="http://www.uniprot.org/citations/27843125" target="\_blank">27843125</a>).

**Cellular Location**

Membrane; Single-pass type I membrane protein

**Tissue Location**

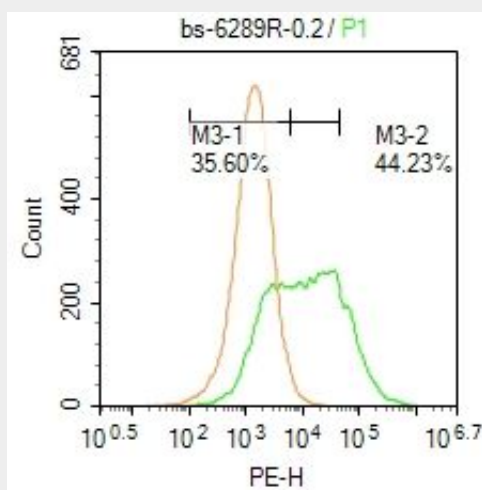
Expressed mainly in the testis. Also expressed in the brain where they are enriched at the postsynaptic sites. Expressed at lower levels in the trachea, prostate, bone marrow, spinal cord, colon, fetal brain, heart, thymus, fetal liver, spleen, leukocytes, ovary, small intestine, pancreas and skeletal muscle. Expression is significantly lower in testicular cancer tissues than in normal testicular tissues. Isoform 3 is expressed in the testis, trachea, prostate and bone marrow.

## ACPT Polyclonal Antibody - Protocols

Provided below are standard protocols that you may find useful for product applications.

- [Western Blot](#)
- [Blocking Peptides](#)
- [Dot Blot](#)
- [Immunohistochemistry](#)
- [Immunofluorescence](#)
- [Immunoprecipitation](#)
- [Flow Cytometry](#)
- [Cell Culture](#)

## ACPT Polyclonal Antibody - Images



Blank control: Hela.

Primary Antibody (green line): Rabbit Anti-ACPT antibody (bs-6289R)

Dilution: 1  $\mu$ g /  $10^6$  cells;

Isotype Control Antibody (orange line): Rabbit IgG .

Secondary Antibody : Goat anti-rabbit IgG-PE

Dilution: 0.2  $\mu$ g /test.

Protocol

The cells were incubated in 5 %BSA to block non-specific protein-protein interactions for 30 min at room temperature .Cells stained with Primary Antibody for 30 min at room temperature. The secondary antibody used for 40 min at room temperature. Acquisition of 20,000 events was performed.