

GCMA Polyclonal Antibody
Purified Rabbit Polyclonal Antibody (Pab)
Catalog # AP58416

Specification

GCMA Polyclonal Antibody - Product Information

Application	WB, IHC-P, IHC-F, IF, E
Primary Accession	Q9NP62
Reactivity	Rat, Pig, Dog, Bovine
Host	Rabbit
Clonality	Polyclonal
Calculated MW	48 KDa
Physical State	Liquid
Immunogen	KLH conjugated synthetic peptide derived from human GCMA/GCM1
Epitope Specificity	121-220/436
Isotype	IgG
Purity	
affinity purified by Protein A	
Buffer	0.01M TBS (pH7.4) with 1% BSA, 0.02% Proclin300 and 50% Glycerol.
SUBCELLULAR LOCATION	Nucleus.
SIMILARITY	Contains 1 GCM DNA-binding domain.
Important Note	This product as supplied is intended for research use only, not for use in human, therapeutic or diagnostic applications.

Background Descriptions

This gene encodes a DNA-binding protein with a gcm-motif (glial cell missing motif). The encoded protein is a homolog of the Drosophila glial cells missing gene (gcm). This protein binds to the GCM-motif (A/G)CCCGCAT, a novel sequence among known targets of DNA-binding proteins. The N-terminal DNA-binding domain confers the unique DNA-binding activity of this protein. [provided by RefSeq, Jul 2008].

GCMA Polyclonal Antibody - Additional Information

Gene ID 8521

Other Names

Chorion-specific transcription factor GCMA, hGCMA, GCM motif protein 1, Glial cells missing homolog 1, GCM1, GCMA

Target/Specificity

Placenta specific.

Dilution

WB~~1:1000<br \>IHC-P~~N/A<br \>IHC-F~~N/A<br \><span class

=dilution_IF">IF~1:50~200<br \>E~N/A

Storage

Store at -20 °C for one year. Avoid repeated freeze/thaw cycles. When reconstituted in sterile pH 7.4 0.01M PBS or diluent of antibody the antibody is stable for at least two weeks at 2-4 °C.

GCMA Polyclonal Antibody - Protein Information

Name GCM1

Synonyms GCMA

Function

Transcription factor involved in the control of expression of placental growth factor (PGF) and other placenta-specific genes (PubMed:10542267, PubMed:18160678). Binds to the trophoblast-specific element 2 (TSE2) of the aromatase gene enhancer (PubMed:10542267). Binds to the SYDE1 promoter (PubMed:27917469). Has a central role in mediating the differentiation of trophoblast cells along both the villous and extravillous pathways in placental development (PubMed:19219068).

Cellular Location

Nucleus {ECO:000255|PROSITE-ProRule:PRU00245}.

Tissue Location

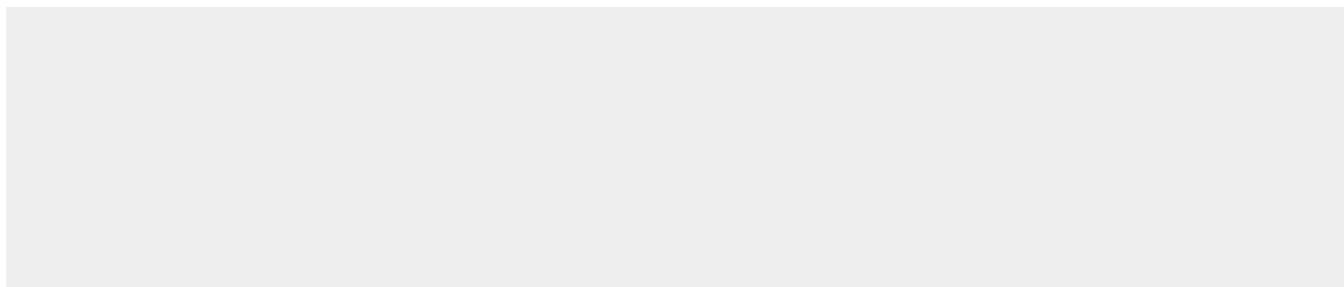
Highly expressed in the placenta (PubMed:10542267). Expressed in trophoblast cells of the villi (PubMed:27917469)

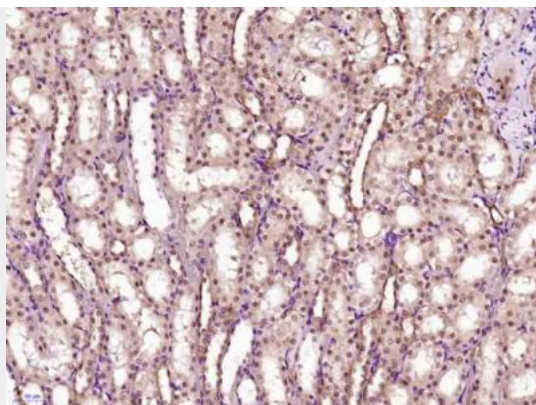
GCMA Polyclonal Antibody - Protocols

Provided below are standard protocols that you may find useful for product applications.

- [Western Blot](#)
- [Blocking Peptides](#)
- [Dot Blot](#)
- [Immunohistochemistry](#)
- [Immunofluorescence](#)
- [Immunoprecipitation](#)
- [Flow Cytometry](#)
- [Cell Culture](#)

GCMA Polyclonal Antibody - Images





Paraformaldehyde-fixed, paraffin embedded (Rat kidney); Antigen retrieval by boiling in sodium citrate buffer (pH6.0) for 15min; Block endogenous peroxidase by 3% hydrogen peroxide for 20 minutes; Blocking buffer (normal goat serum) at 37°C for 30min; Antibody incubation with (GCMA) Polyclonal Antibody, Unconjugated (bs-6306R) at 1:400 overnight at 4°C, followed by operating according to SP Kit(Rabbit) (sp-0023) instructions and DAB staining.