

**IFNA16/Interferon alpha 16 Polyclonal Antibody**  
**Purified Rabbit Polyclonal Antibody (Pab)**  
**Catalog # AP58419****Specification****IFNA16/Interferon alpha 16 Polyclonal Antibody - Product Information**

Application	WB, IHC-P, IHC-F, IF, E
Primary Accession	<a href="#">P05015</a>
Host	Rabbit
Clonality	Polyclonal
Calculated MW	19 KDa
Physical State	Liquid
Immunogen	KLH conjugated synthetic peptide derived from human IFNA16
Epitope Specificity	101-189/189
Isotype	IgG
<b>Purity</b>	
affinity purified by Protein A	
Buffer	0.01M TBS (pH7.4) with 1% BSA, 0.02% Proclin300 and 50% Glycerol.
SUBCELLULAR LOCATION	Secreted.
SIMILARITY	Belongs to the alpha/beta interferon family.
Important Note	This product as supplied is intended for research use only, not for use in human, therapeutic or diagnostic applications.

**Background Descriptions**

IFNA16 is produced by macrophages and has antiviral activities. Interferon stimulates the production of two enzymes: a protein kinase and an oligoadenylate synthetase.

**IFNA16/Interferon alpha 16 Polyclonal Antibody - Additional Information**

**Gene ID** 3449

**Other Names**

Interferon alpha-16, IFN-alpha-16, Interferon alpha-WA, IFNA16

**Dilution**

<span class = "dilution\_WB">WB~~1:1000</span><br \><span class = "dilution\_IHC-P">IHC-P~~N/A</span><br \><span class = "dilution\_IHC-F">IHC-F~~N/A</span><br \><span class = "dilution\_IF">IF~~1:50~200</span><br \><span class = "dilution\_E">E~~N/A</span>

**Format**

0.01M TBS(pH7.4), 0.09% (W/V) sodium azide and 50% Glyce

**Storage**

Store at -20 °C for one year. Avoid repeated freeze/thaw cycles. When reconstituted in sterile pH

7.4 0.01M PBS or diluent of antibody the antibody is stable for at least two weeks at 2-4 °C.

### **IFNA16/Interferon alpha 16 Polyclonal Antibody - Protein Information**

**Name** IFNA16

**Function**

Produced by macrophages, IFN-alpha have antiviral activities. Interferon stimulates the production of two enzymes: a protein kinase and an oligoadenylate synthetase.

**Cellular Location**

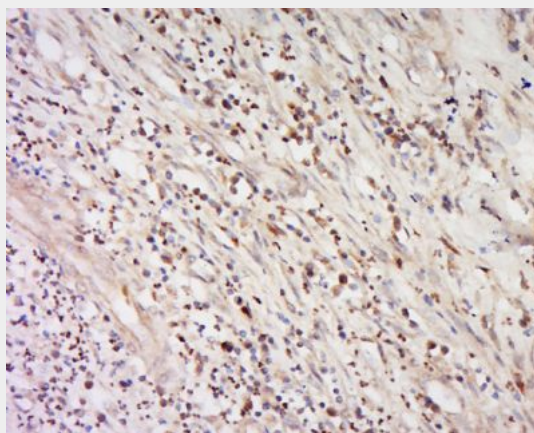
Secreted.

### **IFNA16/Interferon alpha 16 Polyclonal Antibody - Protocols**

Provided below are standard protocols that you may find useful for product applications.

- [Western Blot](#)
- [Blocking Peptides](#)
- [Dot Blot](#)
- [Immunohistochemistry](#)
- [Immunofluorescence](#)
- [Immunoprecipitation](#)
- [Flow Cytometry](#)
- [Cell Culture](#)

### **IFNA16/Interferon alpha 16 Polyclonal Antibody - Images**



Tissue/cell: human cervical carcinoma; 4% Paraformaldehyde-fixed and paraffin-embedded;

Antigen retrieval: citrate buffer ( 0.01M, pH 6.0 ), Boiling bathing for 15min; Block endogenous peroxidase by 3% Hydrogen peroxide for 30min; Blocking buffer (normal goat serum,C-0005) at 37°C for 20 min;

Incubation: Anti-IFNA16/Interferon alpha 16 Polyclonal Antibody, Unconjugated(bs-6330R) 1:500, overnight at 4°C, followed by conjugation to the secondary antibody(SP-0023) and DAB(C-0010) staining