

**FAM107A Polyclonal Antibody**  
**Purified Rabbit Polyclonal Antibody (Pab)**  
**Catalog # AP58428**

**Specification**

**FAM107A Polyclonal Antibody - Product Information**

Application	IHC-P, IHC-F, IF, E
Primary Accession	<a href="#">O95990</a>
Reactivity	Rat, Pig, Dog, Bovine
Host	Rabbit
Clonality	Polyclonal
Calculated MW	17 KDa
Physical State	Liquid
Immunogen	KLH conjugated synthetic peptide derived from human FAM107A
Epitope Specificity	11-110/144
Isotype	IgG
<b>Purity</b>	
affinity purified by Protein A	
Buffer	0.01M TBS (pH7.4) with 1% BSA, 0.02% Proclin300 and 50% Glycerol.
SUBCELLULAR LOCATION	Nucleus.
SIMILARITY	Belongs to the FAM107 family.
SUBUNIT	Nucleus.
Important Note	This product as supplied is intended for research use only, not for use in human, therapeutic or diagnostic applications.

**Background Descriptions**

When transfected into cell lines in which it is not expressed, suppresses cell growth. May play a role in tumor development.

**FAM107A Polyclonal Antibody - Additional Information**

**Gene ID** 11170

**Other Names**

Actin-associated protein FAM107A, Down-regulated in renal cell carcinoma 1, Protein TU3A, FAM107A ([http://www.genenames.org/cgi-bin/gene\\_symbol\\_report?hgnc\\_id=30827](http://www.genenames.org/cgi-bin/gene_symbol_report?hgnc_id=30827))  
HGNC:30827

**Target/Specificity**

Widely expressed in normal tissues. Expression is reduced or absent in a number of cancer cell lines.

**Dilution**

IHC-P~~N/A  
IHC-F~~N/A  
IF~~1:50~200  
E~~N/A

**Format**

0.01M TBS(pH7.4), 0.09% (W/V) sodium azide and 50% Glyce

**Storage**

Store at -20 °C for one year. Avoid repeated freeze/thaw cycles. When reconstituted in sterile pH 7.4 0.01M PBS or diluent of antibody the antibody is stable for at least two weeks at 2-4 °C.

**FAM107A Polyclonal Antibody - Protein Information**

**Name** FAM107A ([HGNC:30827](#))

**Function**

Stress-inducible actin-binding protein that plays a role in synaptic and cognitive functions by modulating actin filamentous (F- actin) dynamics. Mediates polymerization of globular actin to F-actin. Also binds to, stabilizes and bundles F-actin. Involved in synaptic function by regulating neurite outgrowth in an actin-dependent manner and for the acquisition of hippocampus-dependent cognitive function, such as learning and long-term memory (By similarity). Plays a role in the actin and microtubule cytoskeleton organization; negatively regulates focal adhesion (FA) assembly promoting malignant glial cell migration in an actin-, microtubule- and MAP1A-dependent manner (PubMed:<a href="http://www.uniprot.org/citations/20543869" target="\_blank">20543869</a>). Also involved in neuroblastoma G1/S phase cell cycle progression and cell proliferation inhibition by stimulating ubiquitination of NF-kappa-B subunit RELA and NF-kappa-B degradation in a COMMD1- and actin-dependent manner (PubMed:<a href="http://www.uniprot.org/citations/10564580" target="\_blank">10564580</a>, PubMed:<a href="http://www.uniprot.org/citations/28604741" target="\_blank">28604741</a>). May play a role in tumor development (PubMed:<a href="http://www.uniprot.org/citations/10564580" target="\_blank">10564580</a>).

**Cellular Location**

Nucleus. Cytoplasm, cytoskeleton, stress fiber. Cell junction, focal adhesion. Cell projection, ruffle membrane. Synapse {ECO:0000250|UniProtKB:Q78TU8}. Note=Colocalizes with F-actin and COMMD1 in the nucleus (PubMed:28604741). Colocalizes with MAP1A along actin stress fibers and membrane ruffles (PubMed:20543869)

**Tissue Location**

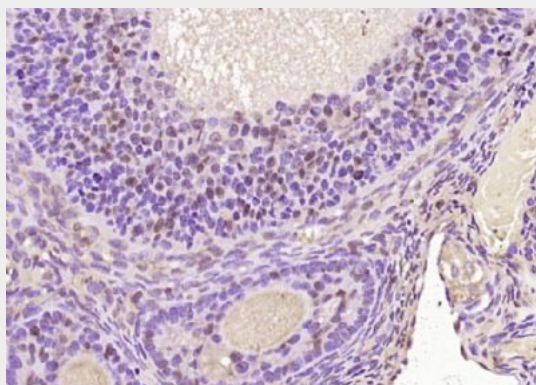
Widely expressed (PubMed:10564580). Expressed in neurons (PubMed:20543869). Expressed in malignant glial tumors (PubMed:20543869). Expression is reduced or absent in a number of cancer cell lines (PubMed:10564580).

**FAM107A Polyclonal Antibody - Protocols**

Provided below are standard protocols that you may find useful for product applications.

- [Western Blot](#)
- [Blocking Peptides](#)
- [Dot Blot](#)
- [Immunohistochemistry](#)
- [Immunofluorescence](#)
- [Immunoprecipitation](#)
- [Flow Cytometry](#)
- [Cell Culture](#)

**FAM107A Polyclonal Antibody - Images**



Paraformaldehyde-fixed, paraffin embedded (rat ovary tissue); Antigen retrieval by boiling in sodium citrate buffer (pH6.0) for 15min; Block endogenous peroxidase by 3% hydrogen peroxide for 20 minutes; Blocking buffer (normal goat serum) at 37°C for 30min; Antibody incubation with (FAM107A) Polyclonal Antibody, Unconjugated (bs-6381R) at 1:200 overnight at 4°C, followed by operating according to SP Kit(Rabbit) (sp-0023) instructions and DAB staining.