

SNCB Antibody (C-term)
Affinity Purified Rabbit Polyclonal Antibody (Pab)
Catalog # AP5842B**Specification**

SNCB Antibody (C-term) - Product Information

Application	WB, IHC-P,E
Primary Accession	Q16143
Other Accession	NP_001001502.1 , NP_003076.1
Reactivity	Human, Mouse
Host	Rabbit
Clonality	Polyclonal
Isotype	Rabbit IgG
Calculated MW	14288
Antigen Region	93-122

SNCB Antibody (C-term) - Additional Information**Gene ID** 6620**Other Names**

Beta-synuclein, SNCB

Target/Specificity

This SNCB antibody is generated from rabbits immunized with a KLH conjugated synthetic peptide between 93-122 amino acids from the C-terminal region of human SNCB.

Dilution

WB~~1:1000

IHC-P~~1:50~100

E~~Use at an assay dependent concentration.

Format

Purified polyclonal antibody supplied in PBS with 0.09% (W/V) sodium azide. This antibody is purified through a protein A column, followed by peptide affinity purification.

Storage

Maintain refrigerated at 2-8°C for up to 2 weeks. For long term storage store at -20°C in small aliquots to prevent freeze-thaw cycles.

Precautions

SNCB Antibody (C-term) is for research use only and not for use in diagnostic or therapeutic procedures.

SNCB Antibody (C-term) - Protein Information**Name** SNCB

Function Non-amyloid component of senile plaques found in Alzheimer disease. Could act as a regulator of SNCA aggregation process. Protects neurons from staurosporine and 6-hydroxy dopamine (6OHDA)-stimulated caspase activation in a p53/TP53-dependent manner. Contributes to restore the SNCA anti-apoptotic function abolished by 6OHDA. Not found in the Lewy bodies associated with Parkinson disease.

Cellular Location

Cytoplasm.

Tissue Location

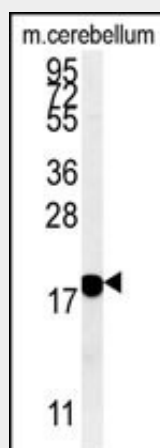
Expressed predominantly in brain; concentrated in presynaptic nerve terminals

SNCB Antibody (C-term) - Protocols

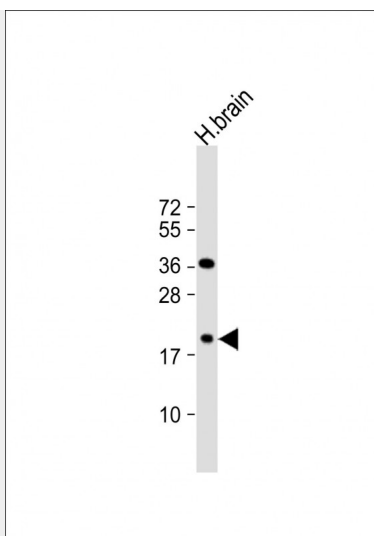
Provided below are standard protocols that you may find useful for product applications.

- [Western Blot](#)
- [Blocking Peptides](#)
- [Dot Blot](#)
- [Immunohistochemistry](#)
- [Immunofluorescence](#)
- [Immunoprecipitation](#)
- [Flow Cytometry](#)
- [Cell Culture](#)

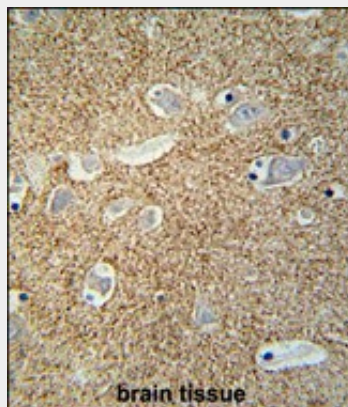
SNCB Antibody (C-term) - Images



SNCB Antibody (C-term) (Cat. #AP5842b) western blot analysis in mouse cerebellum tissue lysates (15ug/lane). This demonstrates the SNCB antibody detected SNCB protein (arrow).



Anti-SNCB Antibody (C-term) at 1:1000 dilution + human brain lysate Lysates/proteins at 20 µg per lane. Secondary Goat Anti-Rabbit IgG, (H+L), Peroxidase conjugated at 1/10000 dilution. Predicted band size : 14 kDa Blocking/Dilution buffer: 5% NFDM/TBST.



SNCB antibody(C-term) (Cat. #AP5842b) immunohistochemistry analysis in formalin fixed and paraffin embedded human brain tissue followed by peroxidase conjugation of the secondary antibody and DAB staining. This data demonstrates the use of the SNCB antibody(C-term) for immunohistochemistry. Clinical relevance has not been evaluated.