

SCGB3A1 Polyclonal Antibody
Purified Rabbit Polyclonal Antibody (Pab)
Catalog # AP58437

Specification

SCGB3A1 Polyclonal Antibody - Product Information

Application	IHC-P, IHC-F, IF, E
Primary Accession	Q96QR1
Host	Rabbit
Clonality	Polyclonal
Calculated MW	8.2 KDa
Physical State	Liquid
Immunogen	KLH conjugated synthetic peptide derived from human SCGB3A1
Epitope Specificity	51-104/104
Isotype	IgG
Purity	
affinity purified by Protein A	
Buffer	0.01M TBS (pH7.4) with 1% BSA, 0.02% Proclin300 and 50% Glycerol.
SUBCELLULAR LOCATION	Secreted.
SIMILARITY	Belongs to the secretoglobin family. UGRP subfamily.
Important Note	This product as supplied is intended for research use only, not for use in human, therapeutic or diagnostic applications.

Background Descriptions

SCGB3A1 is a potential growth inhibitory cytokine.

SCGB3A1 Polyclonal Antibody - Additional Information

Gene ID 92304

Other Names

Secretoglobin family 3A member 1, Cytokine HIN-1, High in normal 1, Pneumo secretory protein 2, PnSP-2, Uteroglobin-related protein 2, SCGB3A1, HIN1, PNSP2, UGRP2

Target/Specificity

Highly expressed in breast tissues. Absent in breast cancer cell lines.

Dilution

IHC-P~~N/A<br \>IHC-F~~N/A<br \>IF~~1:50~200<br \>E~~N/A

Format

0.01M TBS(pH7.4), 0.09% (W/V) sodium azide and 50% Glyce

Storage

Store at -20 °C for one year. Avoid repeated freeze/thaw cycles. When reconstituted in sterile pH 7.4 0.01M PBS or diluent of antibody the antibody is stable for at least two weeks at 2-4 °C.

SCGB3A1 Polyclonal Antibody - Protein Information

Name SCGB3A1

Synonyms HIN1, PNSP2, UGRP2

Function

Secreted cytokine-like protein. Inhibits cell growth in vitro.

Cellular Location

Secreted.

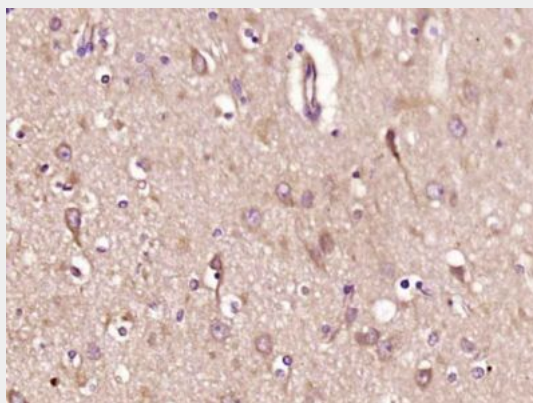
Tissue Location

Highly expressed in lung and prostate (PubMed:11481438). Also found in mammary gland, spleen, pancreas, testis and liver (PubMed:11481438). Detected throughout the airway epithelium in lung, with highest expression in large airways (PubMed:12406855). Found in lung submucosal glands where it localizes to acinar and ductile cells (PubMed:12406855). Not detected in respiratory bronchioles, alveolar ducts or alveolar epithelium (PubMed:12406855). In mammary gland, specifically localizes to luminal epithelial cells (PubMed:11481438).

SCGB3A1 Polyclonal Antibody - Protocols

Provided below are standard protocols that you may find useful for product applications.

- [Western Blot](#)
- [Blocking Peptides](#)
- [Dot Blot](#)
- [Immunohistochemistry](#)
- [Immunofluorescence](#)
- [Immunoprecipitation](#)
- [Flow Cytometry](#)
- [Cell Culture](#)

SCGB3A1 Polyclonal Antibody - Images

Paraformaldehyde-fixed, paraffin embedded (Human brain glioma); Antigen retrieval by boiling in sodium citrate buffer (pH6.0) for 15min; Block endogenous peroxidase by 3% hydrogen peroxide for 20 minutes; Blocking buffer (normal goat serum) at 37°C for 30min; Antibody incubation with (SCGB3A1) Polyclonal Antibody, Unconjugated (bs-6397R) at 1:400 overnight at 4°C, followed by operating according to SP Kit(Rabbit) (sp-0023) instructions and DAB staining.