

CRABP1/Retinol binding protein Polyclonal Antibody
Purified Rabbit Polyclonal Antibody (Pab)
Catalog # AP58446

Specification

CRABP1/Retinol binding protein Polyclonal Antibody - Product Information

Application	WB, IHC-P, IHC-F, IF, E
Primary Accession	P09455
Reactivity	Rat, Pig, Dog, Bovine
Host	Rabbit
Clonality	Polyclonal
Calculated MW	16 KDa
Physical State	Liquid
Immunogen	KLH conjugated synthetic peptide derived from human Retinol binding protein
Epitope Specificity	45-135/135
Isotype	IgG
Purity	
affinity purified by Protein A	
Buffer	0.01M TBS (pH7.4) with 1% BSA, 0.02% Proclin300 and 50% Glycerol.
SUBCELLULAR LOCATION	Cytoplasm.
SIMILARITY	Belongs to the calycin superfamily. Fatty-acid binding protein (FABP) family.
Important Note	This product as supplied is intended for research use only, not for use in human, therapeutic or diagnostic applications.

Background Descriptions

RBP2 is an abundant protein present in the smallintestinal epithelium. It is thought to participate in the uptakeand/or intracellular metabolism of vitamin A. Vitamin A is afat-soluble vitamin necessary for growth, reproduction,differentiation of epithelial tissues, and vision. RBP2 may alsomodulate the supply of retinoic acid to the nuclei of endometrialcells during the menstrual cycle.

CRABP1/Retinol binding protein Polyclonal Antibody - Additional Information

Gene ID 5947

Other Names

Retinol-binding protein 1, Cellular retinol-binding protein, CRBP, Cellular retinol-binding protein I, CRBP-I, RBP1, CRBP1

Target/Specificity

Detected in nearly all the tissues with higher expression in adult ovary, pancreas, pituitary gland and adrenal gland, and fetal liver.

Dilution

WB~~1:1000<br \>IHC-P~~N/A<br \><span class

=["dilution_IHC-F">IHC-F~N/A](#)<br \><span class
=["dilution_IF">IF~1:50~200](#)<br \>E~N/A](#)

Format

0.01M TBS(pH7.4), 0.09% (W/V) sodium azide and 50% Glyce

Storage

Store at -20 °C for one year. Avoid repeated freeze/thaw cycles. When reconstituted in sterile pH 7.4 0.01M PBS or diluent of antibody the antibody is stable for at least two weeks at 2-4 °C.

CRABP1/Retinol binding protein Polyclonal Antibody - Protein Information

Name RBP1

Synonyms CRBP1

Function

Cytoplasmic retinol-binding protein (PubMed:[22665496](http://www.uniprot.org/citations/22665496), PubMed:[26900151](http://www.uniprot.org/citations/26900151), PubMed:[28057518](http://www.uniprot.org/citations/28057518)). Accepts retinol from the transport protein STRA6, and thereby contributes to retinol uptake, storage and retinoid homeostasis (PubMed:[15632377](http://www.uniprot.org/citations/15632377), PubMed:[22665496](http://www.uniprot.org/citations/22665496)).

Cellular Location

Cytoplasm. Lipid droplet

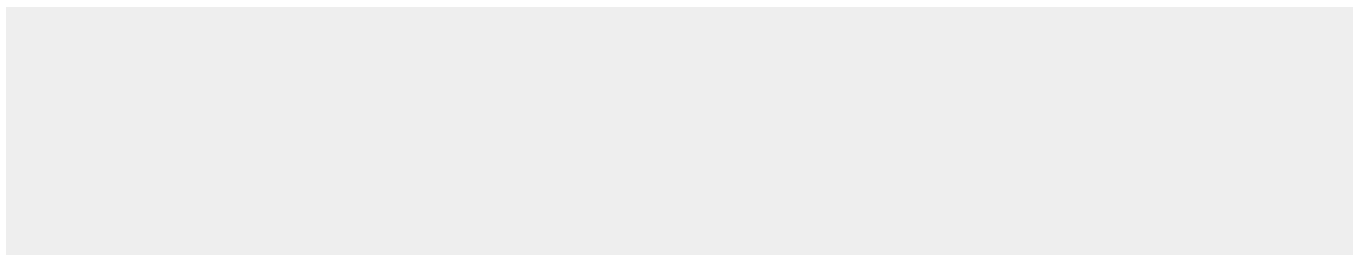
Tissue Location

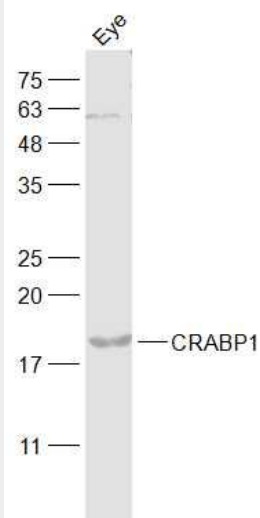
Detected in nearly all the tissues with higher expression in adult ovary, pancreas, pituitary gland and adrenal gland, and fetal liver.

CRABP1/Retinol binding protein Polyclonal Antibody - Protocols

Provided below are standard protocols that you may find useful for product applications.

- [Western Blot](#)
- [Blocking Peptides](#)
- [Dot Blot](#)
- [Immunohistochemistry](#)
- [Immunofluorescence](#)
- [Immunoprecipitation](#)
- [Flow Cytometry](#)
- [Cell Culture](#)

CRABP1/Retinol binding protein Polyclonal Antibody - Images



Sample:

Eye (Mouse) Lysate at 40 ug

Primary: Anti-CRABP1 (bs-6442R) at 1/1000 dilution

Secondary: IRDye800CW Goat Anti-Rabbit IgG at 1/20000 dilution

Predicted band size: 16 kD

Observed band size: 18 kD