

**EGR3 Polyclonal Antibody**  
**Purified Rabbit Polyclonal Antibody (Pab)**  
**Catalog # AP58447****Specification****EGR3 Polyclonal Antibody - Product Information**

Application	WB, IHC-P, IHC-F, IF, E
Primary Accession	<a href="#">Q06889</a>
Reactivity	Rat, Pig, Dog, Bovine
Host	Rabbit
Clonality	Polyclonal
Calculated MW	43 KDa
Physical State	Liquid
Immunogen	KLH conjugated synthetic peptide derived from human EGR3
Epitope Specificity	201-300/387
Isotype	IgG
<b>Purity</b>	
affinity purified by Protein A	
Buffer	0.01M TBS (pH7.4) with 1% BSA, 0.02% Proclin300 and 50% Glycerol.
SUBCELLULAR LOCATION	Nuclear.
SIMILARITY	Belongs to the EGR C2H2-type zinc-finger protein family. Contains 3 C2H2-type zinc fingers.
Important Note	This product as supplied is intended for research use only, not for use in human, therapeutic or diagnostic applications.

**Background Descriptions**

EGR3 is a member of the early growth response transcription factor family of C2H2 zinc finger proteins (other members EGR1, EGR2 and EGR4). EGR proteins are immediate early proteins, expression of which is swiftly upregulated in response to a wide range of extracellular stimuli. EGR3 is also thought to be involved in development of muscle spindles, and is upregulated in several regions of the brain in response to stress or injury.

**EGR3 Polyclonal Antibody - Additional Information****Gene ID** 1960**Other Names**

Early growth response protein 3, EGR-3, Zinc finger protein pilot, EGR3, PILOT

**Dilution**

**dilution\_WB** WB~~1:1000  
**dilution\_IHC-P** IHC-P~~N/A  
**dilution\_IHC-F** IHC-F~~N/A  
**dilution\_IF** IF~~1:50~200  
**dilution\_E** E~~N/A

**Storage**

Store at -20 °C for one year. Avoid repeated freeze/thaw cycles. When reconstituted in sterile pH 7.4 0.01M PBS or diluent of antibody the antibody is stable for at least two weeks at 2-4 °C.

**EGR3 Polyclonal Antibody - Protein Information**

**Name** EGR3

**Synonyms** PILOT

**Function**

Probable transcription factor involved in muscle spindle development.

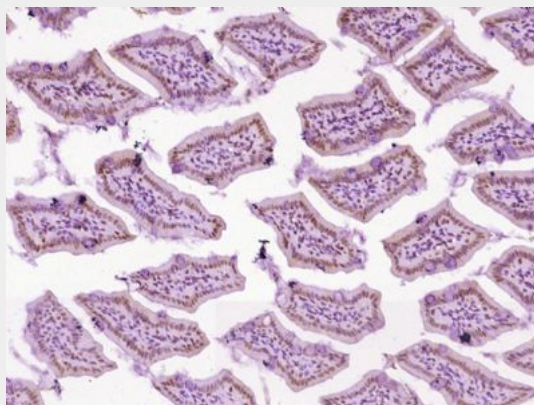
**Cellular Location**

Nucleus.

**EGR3 Polyclonal Antibody - Protocols**

Provided below are standard protocols that you may find useful for product applications.

- [Western Blot](#)
- [Blocking Peptides](#)
- [Dot Blot](#)
- [Immunohistochemistry](#)
- [Immunofluorescence](#)
- [Immunoprecipitation](#)
- [Flow Cytometry](#)
- [Cell Culture](#)

**EGR3 Polyclonal Antibody - Images**

Paraformaldehyde-fixed, paraffin embedded (Mouse intestine); Antigen retrieval by boiling in sodium citrate buffer (pH6.0) for 15min; Block endogenous peroxidase by 3% hydrogen peroxide for 20 minutes; Blocking buffer (normal goat serum) at 37°C for 30min; Antibody incubation with (EGR3) Polyclonal Antibody, Unconjugated (bs-6448R) at 1:400 overnight at 4°C, followed by operating according to SP Kit(Rabbit) (sp-0023) instructions and DAB staining.