

CENPH Polyclonal Antibody
Purified Rabbit Polyclonal Antibody (Pab)
Catalog # AP58458**Specification**

CENPH Polyclonal Antibody - Product Information

Application	WB, IHC-P, IHC-F, IF, E
Primary Accession	Q9H3R5
Reactivity	Rat, Dog, Bovine
Host	Rabbit
Clonality	Polyclonal
Calculated MW	28481

CENPH Polyclonal Antibody - Additional Information**Gene ID** 64946**Other Names**

Centromere protein H, CENP-H, Interphase centromere complex protein 35, CENPH (http://www.genenames.org/cgi-bin/gene_symbol_report?hgnc_id=17268)
HGNC:17268), ICEN35

Dilution

WB~1:1000
IHC-P~N/A
IHC-F~N/A
IF~1:50~200
E~N/A

Format

0.01M TBS(pH7.4), 0.09% (W/V) sodium azide and 50% Glyce

Storage

Store at -20 °C for one year. Avoid repeated freeze/thaw cycles. When reconstituted in sterile pH 7.4 0.01M PBS or diluent of antibody the antibody is stable for at least two weeks at 2-4 °C.

CENPH Polyclonal Antibody - Protein Information**Name** CENPH ([HGNC:17268](#))**Synonyms** ICEN35**Function**

Component of the CENPA-NAC (nucleosome-associated) complex, a complex that plays a central role in assembly of kinetochore proteins, mitotic progression and chromosome segregation. The CENPA-NAC complex recruits the CENPA-CAD (nucleosome distal) complex and may be involved in incorporation of newly synthesized CENPA into centromeres. Required for chromosome congression and efficiently align the chromosomes on a metaphase plate.

Cellular Location

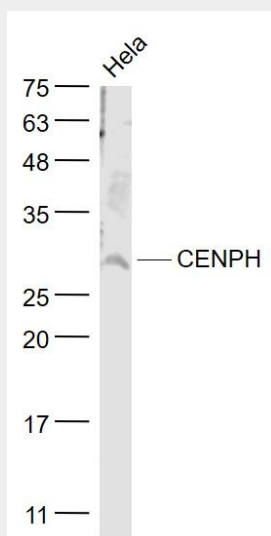
Nucleus. Chromosome, centromere, kinetochore. Note=Associates with active centromere-kinetochore complexes throughout the cell cycle. Colocalizes with inner kinetochore plate proteins CENPA and CENPC during both interphase and metaphase

CENPH Polyclonal Antibody - Protocols

Provided below are standard protocols that you may find useful for product applications.

- [Western Blot](#)
- [Blocking Peptides](#)
- [Dot Blot](#)
- [Immunohistochemistry](#)
- [Immunofluorescence](#)
- [Immunoprecipitation](#)
- [Flow Cytometry](#)
- [Cell Culture](#)

CENPH Polyclonal Antibody - Images



Sample:

HeLa(Human) Cell Lysate at 30 ug

Primary: Anti- CENPH (bs-6519R) at 1/1000 dilution

Secondary: IRDye800CW Goat Anti-Rabbit IgG at 1/20000 dilution

Predicted band size: 28 kD

Observed band size: 28 kD