

Epithelial Stromal Interaction 1 Polyclonal Antibody
Purified Rabbit Polyclonal Antibody (Pab)
Catalog # AP58462**Specification**

Epithelial Stromal Interaction 1 Polyclonal Antibody - Product Information

Application	IHC-P, IHC-F, IF, E
Primary Accession	Q96J88
Reactivity	Rat, Pig, Dog
Host	Rabbit
Clonality	Polyclonal
Calculated MW	36793

Epithelial Stromal Interaction 1 Polyclonal Antibody - Additional Information**Gene ID** 94240**Other Names**

Epithelial-stromal interaction protein 1, EPSTI1

Dilution

IHC-P ~ ~ N/A
IHC-F ~ ~ N/A
IF ~ ~ 1:50 ~ 200
E ~ ~ N/A

Format

0.01M TBS(pH7.4), 0.09% (W/V) sodium azide and 50% Glyce

Storage

Store at -20 °C for one year. Avoid repeated freeze/thaw cycles. When reconstituted in sterile pH 7.4 0.01M PBS or diluent of antibody the antibody is stable for at least two weeks at 2-4 °C.

Epithelial Stromal Interaction 1 Polyclonal Antibody - Protein Information**Name** EPSTI1**Function**

Plays a role in M1 macrophage polarization and is required for the proper regulation of gene expression during M1 versus M2 macrophage differentiation (By similarity). Might play a role in RELA/p65 and STAT1 phosphorylation and nuclear localization upon activation of macrophages (By similarity).

Tissue Location

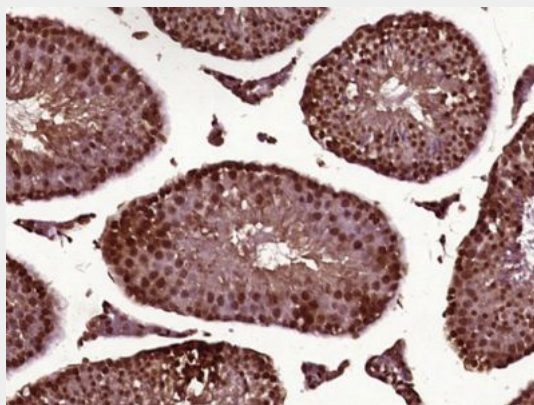
Highly expressed in placenta, small intestine, spleen, kidney, thymus, liver, salivary gland and testes. Weakly expressed in breast, skeletal muscle and colon. Highly expressed in breast cancer upon interaction between tumor cells and stromal cells in vitro. Expressed in blood mononuclear cells from patients with systemic lupus erythematosus (SLE).

Epithelial Stromal Interaction 1 Polyclonal Antibody - Protocols

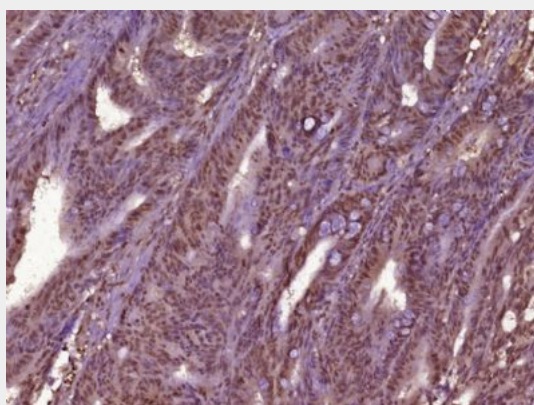
Provided below are standard protocols that you may find useful for product applications.

- [Western Blot](#)
- [Blocking Peptides](#)
- [Dot Blot](#)
- [Immunohistochemistry](#)
- [Immunofluorescence](#)
- [Immunoprecipitation](#)
- [Flow Cytometry](#)
- [Cell Culture](#)

Epithelial Stromal Interaction 1 Polyclonal Antibody - Images



Paraformaldehyde-fixed, paraffin embedded (Mouse testis); Antigen retrieval by boiling in sodium citrate buffer (pH6.0) for 15min; Block endogenous peroxidase by 3% hydrogen peroxide for 20 minutes; Blocking buffer (normal goat serum) at 37°C for 30min; Antibody incubation with (Epithelial Stromal Interaction 1) Polyclonal Antibody, Unconjugated (bs-6532R) at 1:400 overnight at 4°C, followed by operating according to SP Kit(Rabbit) (sp-0023) instructions and DAB staining.



Paraformaldehyde-fixed, paraffin embedded (Human colon carcinoma); Antigen retrieval by boiling in sodium citrate buffer (pH6.0) for 15min; Block endogenous peroxidase by 3% hydrogen peroxide for 20 minutes; Blocking buffer (normal goat serum) at 37°C for 30min; Antibody incubation with (Epithelial Stromal Interaction 1) Polyclonal Antibody, Unconjugated (bs-6532R) at 1:400 overnight at 4°C, followed by operating according to SP Kit(Rabbit) (sp-0023) instructions and DAB staining.