

MARVELD1 Polyclonal Antibody
Purified Rabbit Polyclonal Antibody (Pab)
Catalog # AP58467**Specification****MARVELD1 Polyclonal Antibody - Product Information**

Application	WB, IHC-P, IHC-F, IF, ICC, E
Primary Accession	Q9BSK0
Host	Rabbit
Clonality	Polyclonal
Calculated MW	19 KDa
Physical State	Liquid
Immunogen	KLH conjugated synthetic peptide derived from human MARVELD1
Epitope Specificity	31-130/173
Isotype	IgG
Purity	
affinity purified by Protein A	
Buffer	0.01M TBS (pH7.4) with 1% BSA, 0.02% Proclin300 and 50% Glycerol.
SUBCELLULAR LOCATION	Cell membrane; Multi-pass membrane protein. Cytoplasm, cytoskeleton. Nucleus. Note=Observed in the nucleus and at the perinuclear region during interphase, but localizes at the mitotic spindle and midbody at metaphase. A significant fraction of MARVELD1 translocates to the plasma membrane during anaphase or upon microtubule depolymerization.
SIMILARITY	Contains 1 MARVEL domain.
Important Note	This product as supplied is intended for research use only, not for use in human, therapeutic or diagnostic applications.

Background Descriptions

MARVELD1, (MARVEL domain-containing 1), is one of the MARVEL (MAL and related proteins for vesicle trafficking and membrane link) domain-containing proteins. It is a nuclear-localized protein that is widely expressed in normal human tissues. While it has been reported to be overexpressed in colon cancer, MARVELD1 protein levels are generally lower in several primary tumors including ovary, breast, kidney, bladder and liver. This lower level of MARVELD1 expression in tumors is thought to be due to a higher methylation status of the MARVELD1 promoter as treatment of MDA-MB-361 with 5-aza-2'-deoxycytidine restores MARVELD1 expression, suggesting that loss of MARVELD1 expression may contribute to tumorigenicity.

MARVELD1 Polyclonal Antibody - Additional Information**Gene ID** 83742**Other Names**

MARVEL domain-containing protein 1, MARVELD1, MRVLDC1

Target/Specificity

Widely expressed in normal tissues. Down-regulated in multiple primary tumors.

Dilution

WB~~1:1000<br \>IHC-P~~N/A<br \>IHC-F~~N/A<br \>IF~~1:50~200<br \>ICC~~N/A<br \>E~~N/A

Format

0.01M TBS(pH7.4), 0.09% (W/V) sodium azide and 50% Glyce

Storage

Store at -20 °C for one year. Avoid repeated freeze/thaw cycles. When reconstituted in sterile pH 7.4 0.01M PBS or diluent of antibody the antibody is stable for at least two weeks at 2-4 °C.

MARVELD1 Polyclonal Antibody - Protein Information

Name MARVELD1

Synonyms MRVLDC1

Function

Microtubule-associated protein that exhibits cell cycle- dependent localization and can inhibit cell proliferation and migration.

Cellular Location

Cell membrane; Multi-pass membrane protein. Cytoplasm, cytoskeleton. Nucleus. Note=Observed in the nucleus and at the perinuclear region during interphase, but localizes at the mitotic spindle and midbody at metaphase. A significant fraction of MARVELD1 translocates to the plasma membrane during anaphase or upon microtubule depolymerization (By similarity).

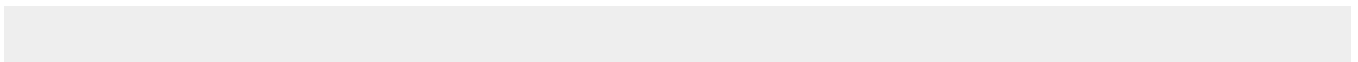
Tissue Location

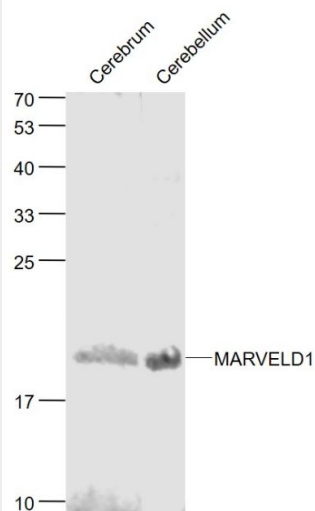
Widely expressed in normal tissues. Down-regulated in multiple primary tumors.

MARVELD1 Polyclonal Antibody - Protocols

Provided below are standard protocols that you may find useful for product applications.

- [Western Blot](#)
- [Blocking Peptides](#)
- [Dot Blot](#)
- [Immunohistochemistry](#)
- [Immunofluorescence](#)
- [Immunoprecipitation](#)
- [Flow Cytometry](#)
- [Cell Culture](#)

MARVELD1 Polyclonal Antibody - Images



Sample:

Cerebrum (Mouse) Lysate at 40 ug

Cerebellum (Mouse) Lysate at 40 ug

Primary: Anti- MARVELD1 (bs-6548R) at 1/1000 dilution

Secondary: IRDye800CW Goat Anti-Rabbit IgG at 1/20000 dilution

Predicted band size: 19 kD

Observed band size: 19 kD