

PAGE1 Polyclonal Antibody
Purified Rabbit Polyclonal Antibody (Pab)
Catalog # AP58469

Specification

PAGE1 Polyclonal Antibody - Product Information

Application	IHC-P
Primary Accession	O75459
Host	Rabbit
Clonality	Polyclonal
Calculated MW	16150

PAGE1 Polyclonal Antibody - Additional Information

Gene ID 8712

Other Names

P antigen family member 1, PAGE-1, AL5, G antigen 9, GAGE-9, G antigen family B member 1, Prostate-associated gene 1 protein, PAGE1, GAGE9, GAGEB1

Format

0.01M TBS(pH7.4), 0.09% (W/V) sodium azide and 50% Glyce

Storage

Store at -20 °C for one year. Avoid repeated freeze/thaw cycles. When reconstituted in sterile pH 7.4 0.01M PBS or diluent of antibody the antibody is stable for at least two weeks at 2-4 °C.

PAGE1 Polyclonal Antibody - Protein Information

Name PAGE1

Synonyms GAGE9, GAGEB1

Tissue Location

Isolated from prostate cancer cell lines; expression associated with progression to androgen insensitive phenotype. Expressed in normal testis and at lower level in normal placenta

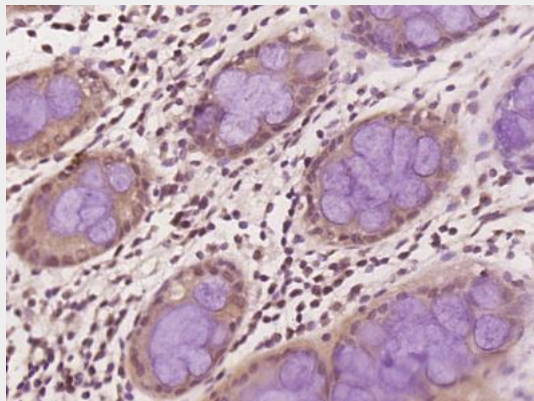
PAGE1 Polyclonal Antibody - Protocols

Provided below are standard protocols that you may find useful for product applications.

- [Western Blot](#)
- [Blocking Peptides](#)
- [Dot Blot](#)
- [Immunohistochemistry](#)
- [Immunofluorescence](#)

- [Immunoprecipitation](#)
- [Flow Cytometry](#)
- [Cell Culture](#)

PAGE1 Polyclonal Antibody - Images



Paraformaldehyde-fixed, paraffin embedded (human cervical carcinoma); Antigen retrieval by boiling in sodium citrate buffer (pH6.0) for 15min; Block endogenous peroxidase by 3% hydrogen peroxide for 20 minutes; Blocking buffer (normal goat serum) at 37°C for 30min; Antibody incubation with (PAGE1) Polyclonal Antibody, Unconjugated (bs-6561R) at 1:400 overnight at 4°C, followed by operating according to SP Kit(Rabbit) (sp-0023) instructions and DAB staining.