

RLBP1L1 Polyclonal Antibody
Purified Rabbit Polyclonal Antibody (Pab)
Catalog # AP58472**Specification**

RLBP1L1 Polyclonal Antibody - Product Information

Application	IHC-P, IHC-F, IF, E
Primary Accession	Q8IUQ0
Reactivity	Rat, Pig, Dog, Bovine
Host	Rabbit
Clonality	Polyclonal
Calculated MW	41 KDa
Physical State	Liquid
Immunogen	KLH conjugated synthetic peptide derived from human ICRF/REG1 alpha 231-330/354
Epitope Specificity	IgG
Isotype	
Purity	
affinity purified by Protein A	
Buffer	0.01M TBS (pH7.4) with 1% BSA, 0.02% Proclin300 and 50% Glycerol.
SUBCELLULAR LOCATION	Golgi apparatus, trans-Golgi network membrane; Peripheral membrane protein. Cytoplasmic vesicle, clathrin-coated vesicle. Early endosome membrane; Peripheral membrane protein.
SIMILARITY	Contains 1 CRAL-TRIO domain.
SUBUNIT	Forms a complex with clathrin heavy chain and gamma-adaptin.
Important Note	This product as supplied is intended for research use only, not for use in human, therapeutic or diagnostic applications.

Background Descriptions

RLBP1L1 is a protein of unknown function. It has 45% identity with human CRALBP (Cellular retinaldehyde-binding protein) which carries 11-cis-retinol or 11-cis-retinaldehyde as endogenous ligands and may function as a substrate carrier protein that modulates interaction of these retinoids with visual cycle enzymes. RLBP1L1 is expressed in brain, and several human carcinoma cell lines.

RLBP1L1 Polyclonal Antibody - Additional Information**Gene ID** 157807**Other Names**

Clavesin-1, Cellular retinaldehyde-binding protein-like, Retinaldehyde-binding protein 1-like 1, clathrin vesicle-associated Sec14 protein 1, CLVS1, CRALBPL, RLBP1L1

Target/Specificity

Expressed mainly in the brain.

Dilution

IHC-P ~ N/A
IHC-F ~ N/A
IF ~ 1:50 ~ 200
E ~ N/A

Format

0.01M TBS(pH7.4), 0.09% (W/V) sodium azide and 50% Glyce

Storage

Store at -20 °C for one year. Avoid repeated freeze/thaw cycles. When reconstituted in sterile pH 7.4 0.01M PBS or diluent of antibody the antibody is stable for at least two weeks at 2-4 °C.

RLBP1L1 Polyclonal Antibody - Protein Information

Name CLVS1

Synonyms CRALBPL, RLBP1L1

Function

Required for normal morphology of late endosomes and/or lysosomes in neurons (By similarity). Binds phosphatidylinositol 3,5- bisphosphate (PtdIns(3,5)P2).

Cellular Location

Golgi apparatus, trans-Golgi network membrane; Peripheral membrane protein. Cytoplasmic vesicle, clathrin-coated vesicle. Early endosome membrane; Peripheral membrane protein

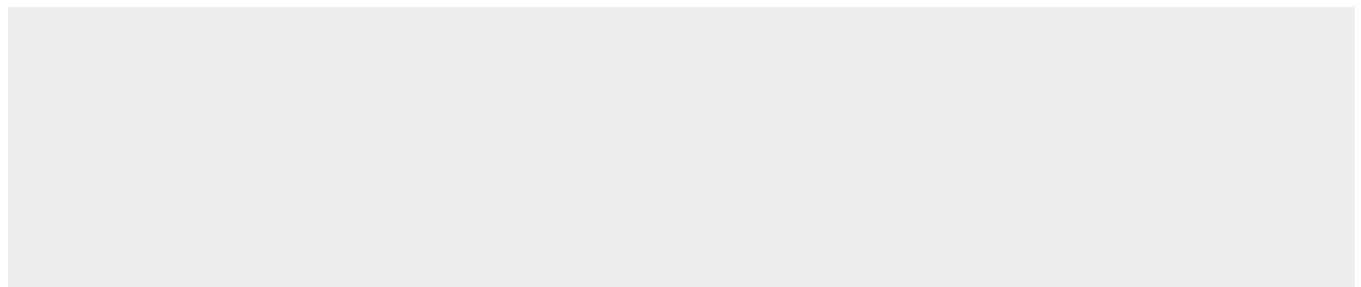
Tissue Location

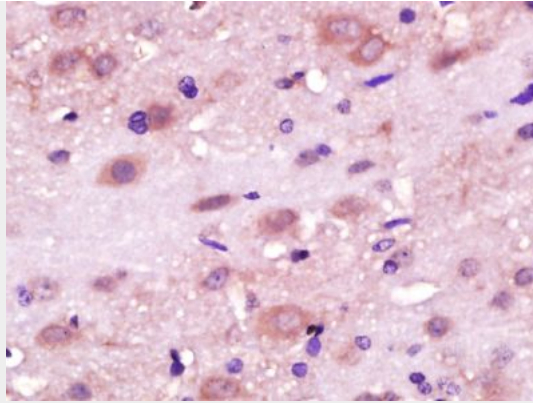
Expressed mainly in the brain.

RLBP1L1 Polyclonal Antibody - Protocols

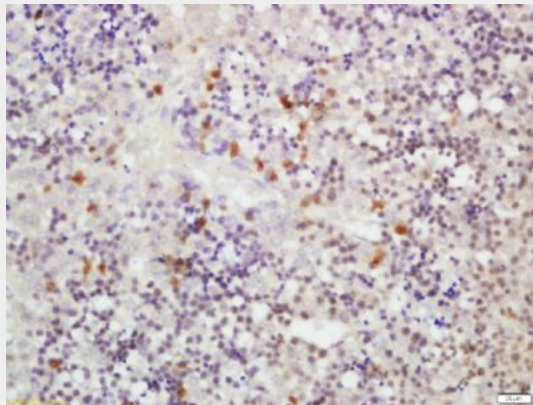
Provided below are standard protocols that you may find useful for product applications.

- [Western Blot](#)
- [Blocking Peptides](#)
- [Dot Blot](#)
- [Immunohistochemistry](#)
- [Immunofluorescence](#)
- [Immunoprecipitation](#)
- [Flow Cytometry](#)
- [Cell Culture](#)

RLBP1L1 Polyclonal Antibody - Images



Paraformaldehyde-fixed, paraffin embedded (Rat brain); Antigen retrieval by boiling in sodium citrate buffer (pH6.0) for 15min; Block endogenous peroxidase by 3% hydrogen peroxide for 20 minutes; Blocking buffer (normal goat serum) at 37°C for 30min; Antibody incubation with (RLBP1L1) Polyclonal Antibody, Unconjugated (bs-6569R) at 1:400 overnight at 4°C, followed by operating according to SP Kit(Rabbit) (sp-0023) instructions and DAB staining.



Tissue/cell: mouse fetal liver; 4% Paraformaldehyde-fixed and paraffin-embedded;

Antigen retrieval: citrate buffer (0.01M, pH 6.0), Boiling bathing for 15min; Block endogenous peroxidase by 3% Hydrogen peroxide for 30min; Blocking buffer (normal goat serum,C-0005) at 37°C for 20 min;

Incubation: Anti-RLBP1L1 Polyclonal Antibody, Unconjugated(bs-6569R) 1:200, overnight at 4°C, followed by conjugation to the secondary antibody(SP-0023) and DAB(C-0010) staining