

RNASE4 Polyclonal Antibody
Purified Rabbit Polyclonal Antibody (Pab)
Catalog # AP58475

Specification

RNASE4 Polyclonal Antibody - Product Information

Application	WB, IHC-P, IHC-F, IF, E
Primary Accession	P34096
Reactivity	Rat, Pig
Host	Rabbit
Clonality	Polyclonal
Calculated MW	14 KDa
Physical State	Liquid
Immunogen	KLH conjugated synthetic peptide derived from human RNASE4
Isotype	IgG
Purity affinity purified by Protein A	
Buffer	0.01M TBS (pH7.4) with 1% BSA, 0.02% Proclin300 and 50% Glycerol.
SUBCELLULAR LOCATION	Secreted.
SIMILARITY	Belongs to the pancreatic ribonuclease family.
Important Note	This product as supplied is intended for research use only, not for use in human, therapeutic or diagnostic applications.

Background Descriptions

The protein encoded by this gene belongs to the pancreatic ribonuclease family. It plays an important role in mRNA cleavage and has marked specificity towards the 3' side of uridine nucleotides. Alternative splicing results in four transcript variants encoding the same protein. This gene and the gene that encodes angiogenin share promoters and 5' exons. Each gene splices to a unique downstream exon that contains its complete coding region. [provided by RefSeq, Aug 2013].

RNASE4 Polyclonal Antibody - Additional Information

Gene ID 6038

Other Names

Ribonuclease 4, RNase 4, 3.1.27.-, RNASE4, RNS4

Dilution

WB~~1:1000<br \>IHC-P~~N/A<br \>IHC-F~~N/A<br \>IF~~1:50~200<br \>E~~N/A

Format

0.01M TBS(pH7.4), 0.09% (W/V) sodium azide and 50% Glyce

Storage

Store at -20 °C for one year. Avoid repeated freeze/thaw cycles. When reconstituted in sterile pH 7.4 0.01M PBS or diluent of antibody the antibody is stable for at least two weeks at 2-4 °C.

RNASE4 Polyclonal Antibody - Protein Information

Name RNASE4

Synonyms RNS4

Function

Cleaves preferentially after uridine bases (PubMed:3467790). Has antimicrobial activity against uropathogenic E.coli (UPEC) (PubMed:33818125). Probably contributes to urinary tract sterility (PubMed:33818125).

Cellular Location

Secreted. Note=Detected in urine.

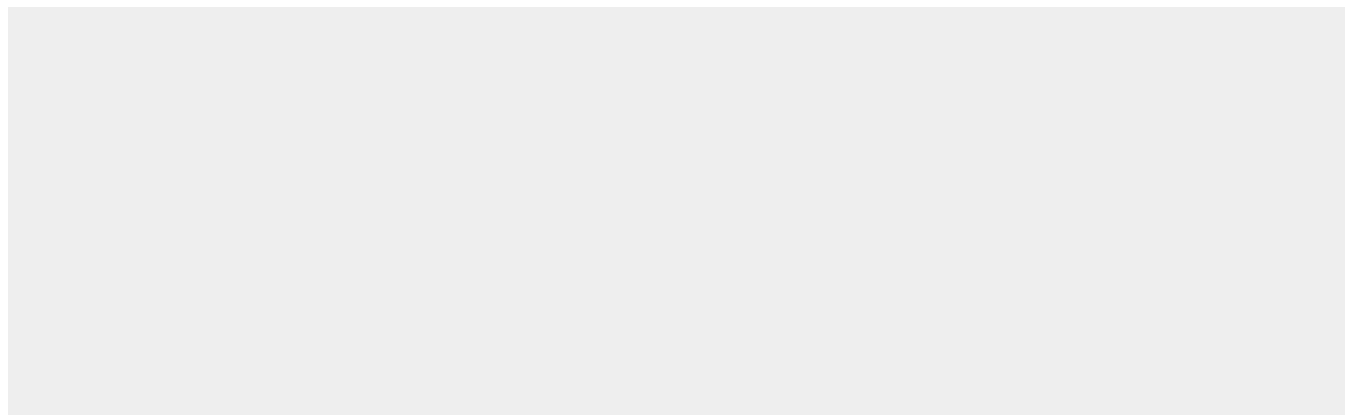
Tissue Location

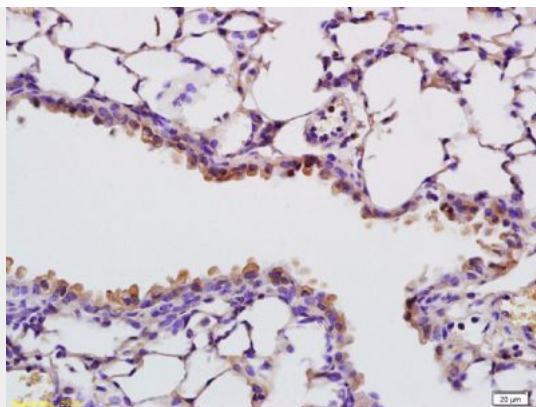
Expressed in the cortical and medullary tubules of the kidney, and in the transitional epithelium of the urinary bladder (at protein level).

RNASE4 Polyclonal Antibody - Protocols

Provided below are standard protocols that you may find useful for product applications.

- [Western Blot](#)
- [Blocking Peptides](#)
- [Dot Blot](#)
- [Immunohistochemistry](#)
- [Immunofluorescence](#)
- [Immunoprecipitation](#)
- [Flow Cytometry](#)
- [Cell Culture](#)

RNASE4 Polyclonal Antibody - Images



Tissue/cell: rat lung tissue; 4% Paraformaldehyde-fixed and paraffin-embedded;

Antigen retrieval: citrate buffer (0.01M, pH 6.0), Boiling bathing for 15min; Block endogenous peroxidase by 3% Hydrogen peroxide for 30min; Blocking buffer (normal goat serum,C-0005) at 37°C for 20 min;

Incubation: Anti-RNASE4/Angiogenin Polyclonal Antibody, Unconjugated(bs-6583R) 1:200, overnight at 4°C, followed by conjugation to the secondary antibody(SP-0023) and DAB(C-0010) staining