

CNTN2 Antibody (Center)
Affinity Purified Rabbit Polyclonal Antibody (Pab)
Catalog # AP5847c

Specification

CNTN2 Antibody (Center) - Product Information

Application	WB, IHC-P,E
Primary Accession	Q02246
Other Accession	P22063 , Q61330 , NP_005067.1
Reactivity	Human, Mouse
Predicted	Rat
Host	Rabbit
Clonality	Polyclonal
Isotype	Rabbit IgG
Calculated MW	113393
Antigen Region	293-321

CNTN2 Antibody (Center) - Additional Information

Gene ID 6900

Other Names

Contactin-2, Axonal glycoprotein TAG-1, Axonin-1, Transient axonal glycoprotein 1, TAX-1, CNTN2, AXT, TAG1, TAX1

Target/Specificity

This CNTN2 antibody is generated from rabbits immunized with a KLH conjugated synthetic peptide between 293-321 amino acids from the Central region of human CNTN2.

Dilution

WB~~1:1000

IHC-P~~1:10~50

E~~Use at an assay dependent concentration.

Format

Purified polyclonal antibody supplied in PBS with 0.09% (W/V) sodium azide. This antibody is purified through a protein A column, followed by peptide affinity purification.

Storage

Maintain refrigerated at 2-8°C for up to 2 weeks. For long term storage store at -20°C in small aliquots to prevent freeze-thaw cycles.

Precautions

CNTN2 Antibody (Center) is for research use only and not for use in diagnostic or therapeutic procedures.

CNTN2 Antibody (Center) - Protein Information

Name CNTN2

Synonyms AXT, TAG1, TAX1

Function In conjunction with another transmembrane protein, CNTNAP2, contributes to the organization of axonal domains at nodes of Ranvier by maintaining voltage-gated potassium channels at the juxtaparanodal region. May be involved in cell adhesion.

Cellular Location

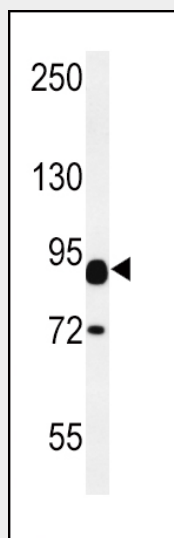
Cell membrane; Lipid-anchor, GPI-anchor. Note=Attached to the neuronal membrane by a GPI-anchor and is also released from neurons

CNTN2 Antibody (Center) - Protocols

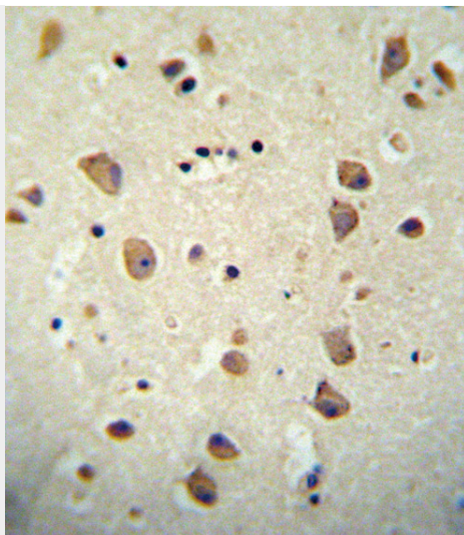
Provided below are standard protocols that you may find useful for product applications.

- [Western Blot](#)
- [Blocking Peptides](#)
- [Dot Blot](#)
- [Immunohistochemistry](#)
- [Immunofluorescence](#)
- [Immunoprecipitation](#)
- [Flow Cytometry](#)
- [Cell Culture](#)

CNTN2 Antibody (Center) - Images



CNTN2 Antibody (Center) (Cat. #AP5847c) western blot analysis in mouse heart tissue lysates (15ug/lane). This demonstrates the CNTN2 antibody detected CNTN2 protein (arrow).



CNTN2 antibody(Center) (Cat. #AP5847c) immunohistochemistry analysis in formalin fixed and paraffin embedded human brain tissue followed by peroxidase conjugation of the secondary antibody and DAB staining. This data demonstrates the use of the CNTN2 antibody(Center) for immunohistochemistry. Clinical relevance has not been evaluated.