

**SCN8A/Nav1.6 Polyclonal Antibody**  
**Purified Rabbit Polyclonal Antibody (Pab)**  
**Catalog # AP58490****Specification**

---

**SCN8A/Nav1.6 Polyclonal Antibody - Product Information**

Application	IHC-P
Primary Accession	<a href="#">Q9UQD0</a>
Reactivity	Rat, Pig, Dog, Bovine
Host	Rabbit
Clonality	Polyclonal
Calculated MW	225280

**SCN8A/Nav1.6 Polyclonal Antibody - Additional Information****Gene ID** 6334**Other Names**

Sodium channel protein type 8 subunit alpha, Sodium channel protein type VIII subunit alpha, Voltage-gated sodium channel subunit alpha Nav1.6, SCN8A, MED

**Format**

0.01M TBS(pH7.4), 0.09% (W/V) sodium azide and 50% Glyce

**Storage**

Store at -20 °C for one year. Avoid repeated freeze/thaw cycles. When reconstituted in sterile pH 7.4 0.01M PBS or diluent of antibody the antibody is stable for at least two weeks at 2-4 °C.

**SCN8A/Nav1.6 Polyclonal Antibody - Protein Information****Name** SCN8A**Synonyms** MED**Function**

Mediates the voltage-dependent sodium ion permeability of excitable membranes (PubMed:<a href="http://www.uniprot.org/citations/29726066" target="\_blank">29726066</a>). Assuming opened or closed conformations in response to the voltage difference across the membrane, the protein forms a sodium-selective channel through which Na(+) ions may pass in accordance with their electrochemical gradient.

**Cellular Location**

Cell membrane; Multi-pass membrane protein. Cell projection, axon {ECO:0000250|UniProtKB:Q9WTU3}. Note=Mainly localizes to the axon initial segment. {ECO:0000250|UniProtKB:Q9WTU3}

**Tissue Location**

Expressed in the hippocampus with increased expression in epileptic tissue compared to normal

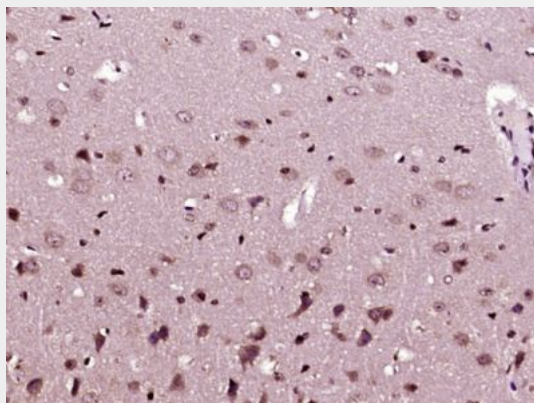
adjacent tissue (at protein level) (PubMed:28842554). Isoform 5: Expressed in non-neuronal tissues, such as monocytes/macrophages.

### SCN8A/Nav1.6 Polyclonal Antibody - Protocols

Provided below are standard protocols that you may find useful for product applications.

- [Western Blot](#)
- [Blocking Peptides](#)
- [Dot Blot](#)
- [Immunohistochemistry](#)
- [Immunofluorescence](#)
- [Immunoprecipitation](#)
- [Flow Cytometry](#)
- [Cell Culture](#)

### SCN8A/Nav1.6 Polyclonal Antibody - Images



Paraformaldehyde-fixed, paraffin embedded (Mouse brain); Antigen retrieval by boiling in sodium citrate buffer (pH6.0) for 15min; Block endogenous peroxidase by 3% hydrogen peroxide for 20 minutes; Blocking buffer (normal goat serum) at 37°C for 30min; Antibody incubation with (SCN8A/Nav1.6) Polyclonal Antibody, Unconjugated (bs-6688R) at 1:400 overnight at 4°C, followed by operating according to SP Kit(Rabbit) (sp-0023) instructions and DAB staining.