

**Sema3C Polyclonal Antibody**  
**Purified Rabbit Polyclonal Antibody (Pab)**  
**Catalog # AP58493****Specification**

---

**Sema3C Polyclonal Antibody - Product Information**

Application	WB, IHC-P, IHC-F, IF, E
Primary Accession	<a href="#">Q99985</a>
Reactivity	Mouse
Predicted	Human, Rat, Rabbit, Pig, Chicken
Host	Rabbit
Clonality	Polyclonal

**Sema3C Polyclonal Antibody - Additional Information****Gene ID** 10512**Other Names**

Semaphorin-3C, Semaphorin-E, Sema E, SEMA3C, SEMAE

**Dilution**

<span class = "dilution\_WB">WB~~1:1000</span><br \><span class = "dilution\_IHC-P">IHC-P~~N/A</span><br \><span class = "dilution\_IHC-F">IHC-F~~N/A</span><br \><span class = "dilution\_IF">IF~~1:50~200</span><br \><span class = "dilution\_E">E~~N/A</span>

**Format**

0.01M TBS(pH7.4), 0.09% (W/V) sodium azide and 50% Glyce

**Storage**

Store at -20 °C for one year. Avoid repeated freeze/thaw cycles. When reconstituted in sterile pH 7.4 0.01M PBS or diluent of antibody the antibody is stable for at least two weeks at 2-4 °C.

**Sema3C Polyclonal Antibody - Protein Information****Name** SEMA3C**Synonyms** SEMAE**Function**

Binds to plexin family members and plays an important role in the regulation of developmental processes. Required for normal cardiovascular development during embryogenesis. Functions as attractant for growing axons, and thereby plays an important role in axon growth and axon guidance (By similarity).

**Cellular Location**

Secreted.

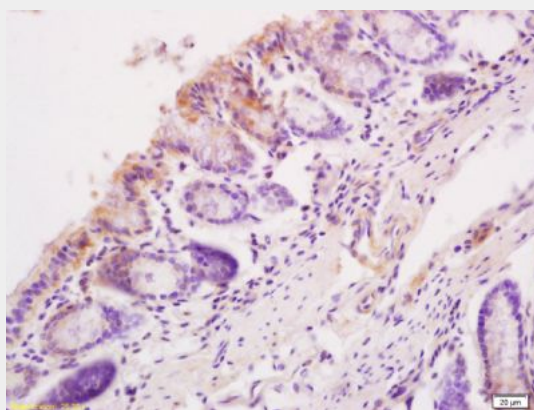
**Tissue Location**

Expressed intensely in the heart, skeletal muscle, colon, small intestine, ovary, testis, and prostate. Faint expression ubiquitously among other organs, including brain

**Sema3C Polyclonal Antibody - Protocols**

Provided below are standard protocols that you may find useful for product applications.

- [Western Blot](#)
- [Blocking Peptides](#)
- [Dot Blot](#)
- [Immunohistochemistry](#)
- [Immunofluorescence](#)
- [Immunoprecipitation](#)
- [Flow Cytometry](#)
- [Cell Culture](#)

**Sema3C Polyclonal Antibody - Images**

Tissue/cell: mouse intestine tissue; 4% Paraformaldehyde-fixed and paraffin-embedded;

Antigen retrieval: citrate buffer ( 0.01M, pH 6.0 ), Boiling bathing for 15min; Block endogenous peroxidase by 3% Hydrogen peroxide for 30min; Blocking buffer (normal goat serum,C-0005) at 37°C for 20 min;

Incubation: Anti-Sema3C/Semaphorin 3c Polyclonal Antibody, Unconjugated(bs-6692R) 1:200, overnight at 4°C, followed by conjugation to the secondary antibody(SP-0023) and DAB(C-0010) staining