

Coronin 3 Polyclonal Antibody
Purified Rabbit Polyclonal Antibody (Pab)
Catalog # AP58512**Specification****Coronin 3 Polyclonal Antibody - Product Information**

Application	IHC-P
Primary Accession	O9ULV4
Reactivity	Rat, Pig, Dog, Bovine
Host	Rabbit
Clonality	Polyclonal
Calculated MW	53249

Coronin 3 Polyclonal Antibody - Additional Information**Gene ID** 23603**Other Names**

Coronin-1C, Coronin-3, hCRNN4, CORO1C {ECO:0000303|PubMed:10828594, ECO:0000312|HGNC:HGNC:2254}

Format

0.01M TBS(pH7.4), 0.09% (W/V) sodium azide and 50% Glyce

Storage

Store at -20 °C for one year. Avoid repeated freeze/thaw cycles. When reconstituted in sterile pH 7.4 0.01M PBS or diluent of antibody the antibody is stable for at least two weeks at 2-4 °C.

Coronin 3 Polyclonal Antibody - Protein Information**Name** CORO1C {ECO:0000303|PubMed:10828594, ECO:0000312|HGNC:HGNC:2254}**Function**

Plays a role in directed cell migration by regulating the activation and subcellular location of RAC1 (PubMed:25074804, PubMed:25925950). Increases the presence of activated RAC1 at the leading edge of migrating cells (PubMed:25074804, PubMed:25925950). Required for normal organization of the cytoskeleton, including the actin cytoskeleton, microtubules and the vimentin intermediate filaments (By similarity). Plays a role in endoplasmic reticulum- associated endosome fission: localizes to endosome membrane tubules and promotes recruitment of TMCC1, leading to recruitment of the endoplasmic reticulum to endosome tubules for fission (PubMed:30220460). Endosome membrane fission of early and late endosomes is essential to separate regions destined for lysosomal degradation from carriers to be recycled to the plasma membrane (PubMed:30220460). Required for normal cell proliferation, cell migration, and normal formation of lamellipodia (By similarity).

Required for normal distribution of mitochondria within cells (By similarity).

Cellular Location

Cell membrane; Peripheral membrane protein; Cytoplasmic side. Cell projection, lamellipodium. Cell projection, ruffle membrane. Cytoplasm, cytoskeleton. Cytoplasm, cell cortex Endosome membrane. Note=All isoforms colocalize with the actin cytoskeleton in the cytosol, and especially in the cell cortex (PubMed:10828594, PubMed:19651142, PubMed:25074804) Colocalizes with F-actin at the leading edge of lamellipodia. Partially colocalizes with microtubules and vimentin intermediate filaments (PubMed:10828594, PubMed:19651142, PubMed:25074804). Localizes to endosome membrane tubules/buds (PubMed:30220460)

Tissue Location

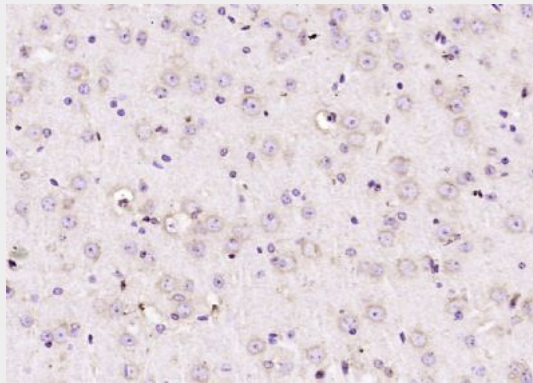
Ubiquitous..

Coronin 3 Polyclonal Antibody - Protocols

Provided below are standard protocols that you may find useful for product applications.

- [Western Blot](#)
- [Blocking Peptides](#)
- [Dot Blot](#)
- [Immunohistochemistry](#)
- [Immunofluorescence](#)
- [Immunoprecipitation](#)
- [Flow Cytometry](#)
- [Cell Culture](#)

Coronin 3 Polyclonal Antibody - Images



Paraformaldehyde-fixed, paraffin embedded (mouse brain); Antigen retrieval by boiling in sodium citrate buffer (pH6.0) for 15min; Block endogenous peroxidase by 3% hydrogen peroxide for 20 minutes; Blocking buffer (normal goat serum) at 37°C for 30min; Antibody incubation with (Coronin 3) Polyclonal Antibody, Unconjugated (bs-6799R) at 1:200 overnight at 4°C, followed by operating according to SP Kit(Rabbit) (sp-0023) instructions and DAB staining.