

**MAGEB6 Polyclonal Antibody**  
**Purified Rabbit Polyclonal Antibody (Pab)**  
**Catalog # AP58523****Specification****MAGEB6 Polyclonal Antibody - Product Information**

Application	WB, IHC-P, IHC-F, IF, E
Primary Accession	<a href="#">Q8N7X4</a>
Host	Rabbit
Clonality	Polyclonal
Calculated MW	44 KDa
Physical State	Liquid
Immunogen	KLH conjugated synthetic peptide derived from human MAGEB6
Epitope Specificity	151-250/407
Isotype	IgG
<b>Purity</b>	
affinity purified by Protein A	
Buffer	0.01M TBS (pH7.4) with 1% BSA, 0.02% Proclin300 and 50% Glycerol.
SIMILARITY	Contains 1 MAGE domain.
Important Note	This product as supplied is intended for research use only, not for use in human, therapeutic or diagnostic applications.

**Background Descriptions**

The melanoma-associated antigen (MAGE) family consists of a number of antigens recognized by cytotoxic T lymphocytes. The MAGE genes were initially isolated from different type of tumors, and based on their virtually exclusive tumor-specific expression in adult tissues, they have been used as targets for cancer immunotherapy. MAGE genes encode for tumor-rejection antigens and are expressed in tumors of different histologic types, but not in normal tissues, with the exception of testis and placenta. Although a large number of MAGE genes have now been identified and extensively studied in tumors of various origin, their function in normal cells remains unknown. MAGE-B6 is expressed in testis and tumors of various histological origins but has not been shown to be expressed in other normal tissues.

**MAGEB6 Polyclonal Antibody - Additional Information****Gene ID** 158809**Other Names**

Melanoma-associated antigen B6, Cancer/testis antigen 3.4, CT3.4, MAGE-B6 antigen, MAGEB6

**Target/Specificity**

Expressed in testis. Not expressed in other normal tissues, but is expressed in tumors of different histological origins.

**Dilution**

&lt;span class = "dilution\_WB"&gt;WB~1:1000&lt;/span&gt;&lt;br \&gt;&lt;span class

=>IHC-P~N/A</span><br \><span class  
=>IHC-F~N/A</span><br \><span class  
=>IF~~1:50~200</span><br \><span class =>E~N/A</span>

**Format**

0.01M TBS(pH7.4), 0.09% (W/V) sodium azide and 50% Glyce

**Storage**

Store at -20 °C for one year. Avoid repeated freeze/thaw cycles. When reconstituted in sterile pH 7.4 0.01M PBS or diluent of antibody the antibody is stable for at least two weeks at 2-4 °C.

**MAGEB6 Polyclonal Antibody - Protein Information**

**Name** MAGEB6

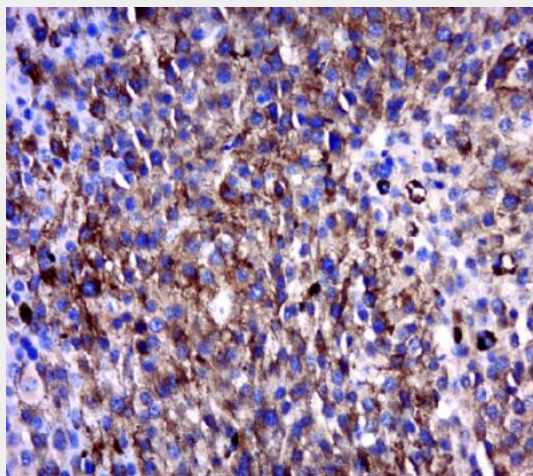
**Tissue Location**

Expressed in testis. Not expressed in other normal tissues, but is expressed in tumors of different histological origins

**MAGEB6 Polyclonal Antibody - Protocols**

Provided below are standard protocols that you may find useful for product applications.

- [Western Blot](#)
- [Blocking Peptides](#)
- [Dot Blot](#)
- [Immunohistochemistry](#)
- [Immunofluorescence](#)
- [Immunoprecipitation](#)
- [Flow Cytometry](#)
- [Cell Culture](#)

**MAGEB6 Polyclonal Antibody - Images**

Paraformaldehyde-fixed, paraffin embedded (human melanoma tumor); Antigen retrieval by boiling in sodium citrate buffer (pH6.0) for 15min; Block endogenous peroxidase by 3% hydrogen peroxide for 20 minutes; Blocking buffer (normal goat serum) at 37°C for 30min; Antibody

incubation with (MAGEB6) Polyclonal Antibody, Unconjugated (bs-6825R) at 1:400 overnight at 4°C, followed by a conjugated secondary (sp-0023) for 20 minutes and DAB staining.