

**NLRP9 Polyclonal Antibody**  
**Purified Rabbit Polyclonal Antibody (Pab)**  
**Catalog # AP58536****Specification****NLRP9 Polyclonal Antibody - Product Information**

Application	WB, IHC-P, IHC-F, IF, E
Primary Accession	<a href="#">Q7RTR0</a>
Reactivity	Rat
Host	Rabbit
Clonality	Polyclonal
Calculated MW	113312

**NLRP9 Polyclonal Antibody - Additional Information****Gene ID** 338321**Other Names**

NACHT, LRR and PYD domains-containing protein 9, Nucleotide-binding oligomerization domain protein 6, PYRIN and NACHT-containing protein 12, NLRP9, NALP9, NOD6, PAN12

**Dilution**

<span class = "dilution\_WB">WB~~1:1000</span><br \><span class = "dilution\_IHC-P">IHC-P~~N/A</span><br \><span class = "dilution\_IHC-F">IHC-F~~N/A</span><br \><span class = "dilution\_IF">IF~~1:50~200</span><br \><span class = "dilution\_E">E~~N/A</span>

**Format**

0.01M TBS(pH7.4), 0.09% (W/V) sodium azide and 50% Glyce

**Storage**

Store at -20 °C for one year. Avoid repeated freeze/thaw cycles. When reconstituted in sterile pH 7.4 0.01M PBS or diluent of antibody the antibody is stable for at least two weeks at 2-4 °C.

**NLRP9 Polyclonal Antibody - Protein Information****Name** NLRP9**Synonyms** NALP9, NOD6, PAN12**Function**

As the sensor component of the NLRP9 inflammasome, plays a crucial role in innate immunity and inflammation. In response to pathogens, including rotavirus, initiates the formation of the inflammasome polymeric complex, made of NLRP9, PYCARD and CASP1. Recruitment of proCASP1 to the inflammasome promotes its activation and CASP1-catalyzed IL1B and IL18 maturation and release in the extracellular milieu. The active cytokines stimulate inflammatory responses. Inflammasomes can also induce pyroptosis, an inflammatory form of programmed cell death. NLRP9 inflammasome activation may be initiated by DHX9 interaction with viral double-stranded

RNA (dsRNA), preferentially to short dsRNA segments.

#### Cellular Location

Cytoplasm {ECO:0000250|UniProtKB:Q66X22}. Inflammasome

#### Tissue Location

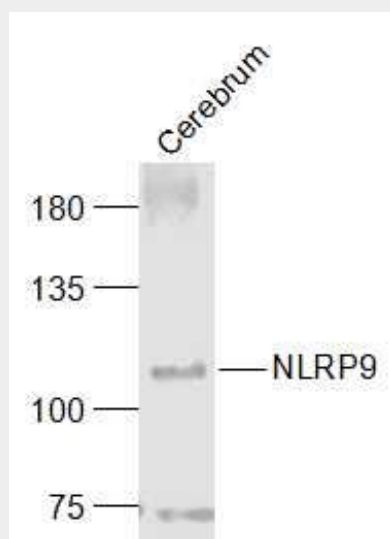
Expressed in ileum intestinal epithelial cells. Not detected in peripheral blood mononuclear cells (PubMed:28636595) Expressed in cerebral endothelial cells and, at much lower levels, in brain pericytes (PubMed:28432035).

### NLRP9 Polyclonal Antibody - Protocols

Provided below are standard protocols that you may find useful for product applications.

- [Western Blot](#)
- [Blocking Peptides](#)
- [Dot Blot](#)
- [Immunohistochemistry](#)
- [Immunofluorescence](#)
- [Immunoprecipitation](#)
- [Flow Cytometry](#)
- [Cell Culture](#)

### NLRP9 Polyclonal Antibody - Images



**Sample:**

Cerebrum (Mouse) Lysate at 40 ug

Primary: Anti-NLRP9 (bs-6867R) at 1/1000 dilution

Secondary: IRDye800CW Goat Anti-Rabbit IgG at 1/20000 dilution

Predicted band size: 109 kD

Observed band size: 109 kD