

SLC9A3R1 Antibody (Center)
Affinity Purified Rabbit Polyclonal Antibody (Pab)
Catalog # AP5853c

Specification

SLC9A3R1 Antibody (Center) - Product Information

Application	WB, FC, E
Primary Accession	O14745
Other Accession	O9JJ19 , P70441 , Q4R6G4 , Q3SZK8 , NP_004243.1
Reactivity	Human
Predicted	Bovine, Monkey, Mouse, Rat
Host	Rabbit
Clonality	Polyclonal
Isotype	Rabbit IgG
Antigen Region	168-197

SLC9A3R1 Antibody (Center) - Additional Information

Gene ID 9368

Other Names

Na(+)/H(+) exchange regulatory cofactor NHE-RF1, NHERF-1, Ezrin-radixin-moesin-binding phosphoprotein 50, EBP50, Regulatory cofactor of Na(+)/H(+) exchanger, Sodium-hydrogen exchanger regulatory factor 1, Solute carrier family 9 isoform A3 regulatory factor 1, SLC9A3R1, NHERF, NHERF1

Target/Specificity

This SLC9A3R1 antibody is generated from rabbits immunized with a KLH conjugated synthetic peptide between 168-197 amino acids of human SLC9A3R1.

Dilution

WB~~1:1000
FC~~1:10~50

Format

Purified polyclonal antibody supplied in PBS with 0.09% (W/V) sodium azide. This antibody is purified through a protein A column, followed by peptide affinity purification.

Storage

Maintain refrigerated at 2-8°C for up to 2 weeks. For long term storage store at -20°C in small aliquots to prevent freeze-thaw cycles.

Precautions

SLC9A3R1 Antibody (Center) is for research use only and not for use in diagnostic or therapeutic procedures.

SLC9A3R1 Antibody (Center) - Protein Information

Name NHERF1 ([HGNC:11075](#))

Synonyms NHERF, SLC9A3R1

Function Scaffold protein that connects plasma membrane proteins with members of the ezrin/moesin/radixin family and thereby helps to link them to the actin cytoskeleton and to regulate their surface expression. Necessary for recycling of internalized ADRB2. Was first known to play a role in the regulation of the activity and subcellular location of SLC9A3. Necessary for cAMP-mediated phosphorylation and inhibition of SLC9A3. May enhance Wnt signaling. May participate in HTR4 targeting to microvilli (By similarity). Involved in the regulation of phosphate reabsorption in the renal proximal tubules. Involved in sperm capacitation. May participate in the regulation of the chloride and bicarbonate homeostasis in spermatozoa.

Cellular Location

Cytoplasm. Apical cell membrane. Endomembrane system; Peripheral membrane protein. Cell projection, filopodium. Cell projection, ruffle. Cell projection, microvillus. Note=Translocates from the cytoplasm to the apical cell membrane in a PODXL-dependent manner. Colocalizes with CFTR at the midpiece of sperm tail (By similarity). Colocalizes with actin in microvilli-rich apical regions of the syncytiotrophoblast. Found in microvilli, ruffling membrane and filopodia of HeLa cells. Present in lipid rafts of T-cells.

Tissue Location

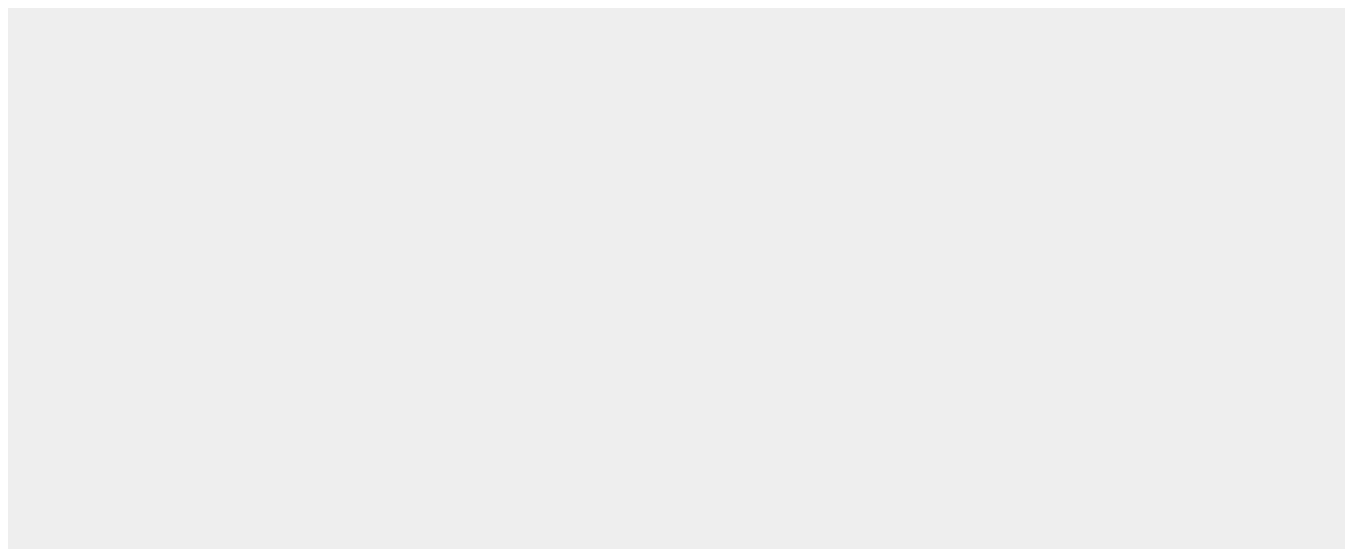
Detected in liver, kidney, pancreas, prostate, spleen, small intestine and placenta, in particular in the syncytiotrophoblast.

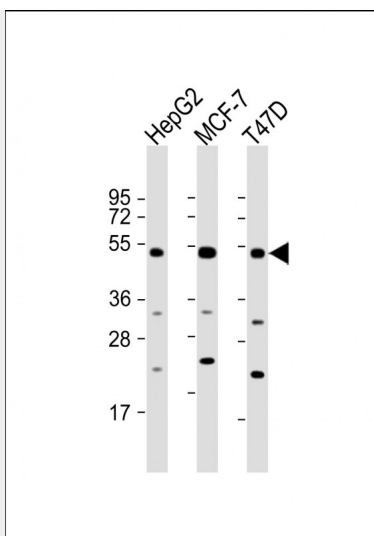
SLC9A3R1 Antibody (Center) - Protocols

Provided below are standard protocols that you may find useful for product applications.

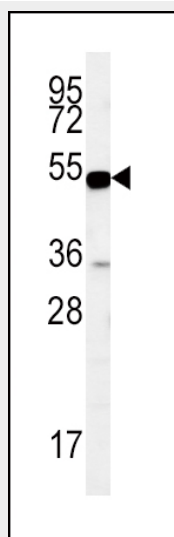
- [Western Blot](#)
- [Blocking Peptides](#)
- [Dot Blot](#)
- [Immunohistochemistry](#)
- [Immunofluorescence](#)
- [Immunoprecipitation](#)
- [Flow Cytometry](#)
- [Cell Culture](#)

SLC9A3R1 Antibody (Center) - Images

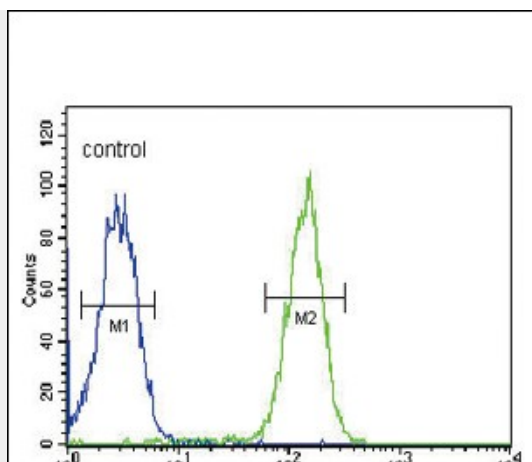




All lanes : Anti-SLC9A3R1 Antibody (Center) at 1:2000 dilution Lane 1: HepG2 whole cell lysate Lane 2: MCF-7 whole cell lysate Lane 3: T47D whole cell lysate Lysates/proteins at 20 μ g per lane. Secondary Goat Anti-Rabbit IgG, (H+L), Peroxidase conjugated at 1/10000 dilution. Predicted band size : 39 kDa Blocking/Dilution buffer: 5% NFDM/TBST.



SLC9A3R1 Antibody (Center) (Cat. #AP5853c) western blot analysis in MDA-MB435 cell line lysates (35ug/lane). This demonstrates the SLC9A3R1 antibody detected the SLC9A3R1 protein (arrow).



SLC9A3R1 Antibody (Center) (Cat. #AP5853c) flow cytometric analysis of MDA-MB435 cells (right histogram) compared to a negative control cell (left histogram). FITC-conjugated goat-anti-rabbit secondary antibodies were used for the analysis.

SLC9A3R1 Antibody (Center) - Citations

- [Cell cycle dependent association of EBP50 with protein phosphatase 2A in endothelial cells.](#)