

**CENPT Polyclonal Antibody**  
**Purified Rabbit Polyclonal Antibody (Pab)**  
**Catalog # AP58545****Specification**

---

**CENPT Polyclonal Antibody - Product Information**

Application	IHC-P, IHC-F, IF, E
Primary Accession	<a href="#">96BT3</a>
Host	Rabbit
Clonality	Polyclonal
Calculated MW	62 KDa
Physical State	Liquid
Immunogen	KLH conjugated synthetic peptide derived from human CENPT
Epitope Specificity	63-72/561
Isotype	IgG
<b>Purity</b>	
affinity purified by Protein A	
Buffer	0.01M TBS (pH7.4) with 1% BSA, 0.02% Proclin300 and 50% Glycerol.
SUBCELLULAR LOCATION	Nucleus. Chromosome, centromere, kinetochore. Note=Constitutively localizes to centromeres throughout the cell cycle, and to kinetochores during mitosis. Localizes to the inner kinetochore, and may connect it to the outer kinetochore via its N-terminus.
SIMILARITY	Belongs to the CENPT family.
SUBUNIT	Component of the CENPA-NAC complex, at least composed of CENPA, CENPC, CENPH, CENPM, CENPN, CENPT and MLF1IP/CENPU. The CENPA-NAC complex interacts with the CENPA-CAD complex, composed of CENPI, CENPK, CENPL, CENPO, CENPP, CENPQ, CENPR and CENPS. Part of a centromere complex consisting of CENPA, CENPT and CENPW. Part of a centromere complex consisting of histone H3, CENPT and CENPW. Interacts (via N-terminus) with the NDC80 complex (Probable). Component of a heterotetrameric CENP-T-W-S-X complex composed of APITD1/CENPS, STRA13/CENPX, CENPT and CENPW. Interacts directly with CENPW. Binds DNA. Dynamically phosphorylated at Ser-47 and probably also other sites during the cell cycle. Phosphorylated at Ser-47 during G2 phase, metaphase and anaphase, but not during telophase or G1 phase. Phosphorylated upon DNA damage,
Post-translational modifications	

**Important Note**

probably by ATM or ATR.

**This product as supplied is intended for research use only, not for use in human, therapeutic or diagnostic applications.**

**Background Descriptions**

The centromere is a specialized chromatin domain, present throughout the cell cycle, that acts as a platform on which the transient assembly of the kinetochore occurs during mitosis. All active centromeres are characterized by the presence of long arrays of nucleosomes in which CENPA (MIM 117139) replaces histone H3 (see MIM 601128). CENPT is an additional factor required for centromere assembly (Foltz et al., 2006 [PubMed 16622419]).[supplied by OMIM, Mar 2008]

**CENPT Polyclonal Antibody - Additional Information****Dilution**

IHC-P~N/A  
IHC-F~N/A  
IF~1:50~200  
E~N/A

**Format**

0.01M TBS(pH7.4), 0.09% (W/V) sodium azide and 50% Glyce

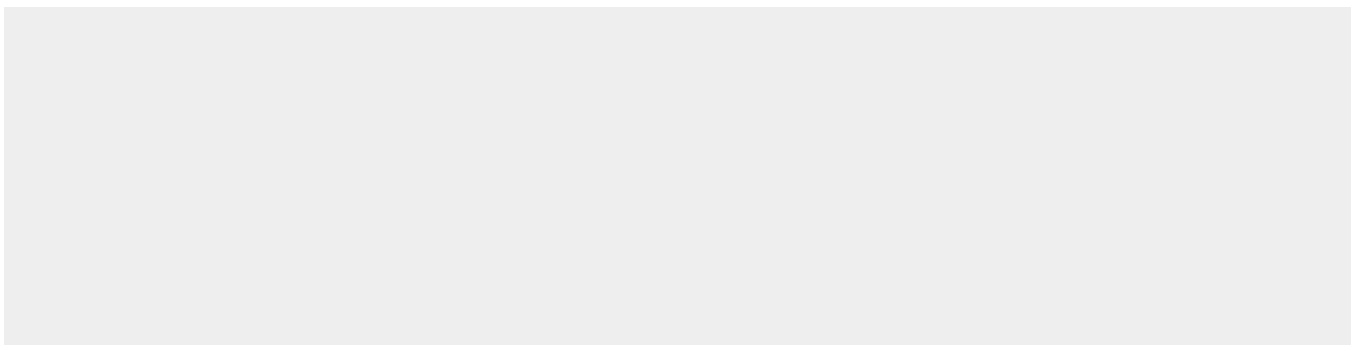
**Storage**

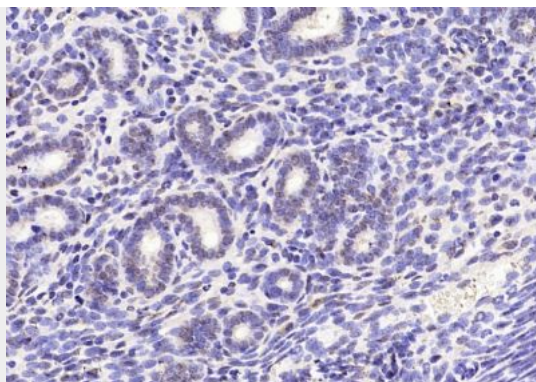
Store at -20 °C for one year. Avoid repeated freeze/thaw cycles. When reconstituted in sterile pH 7.4 0.01M PBS or diluent of antibody the antibody is stable for at least two weeks at 2-4 °C.

**CENPT Polyclonal Antibody - Protein Information****CENPT Polyclonal Antibody - Protocols**

Provided below are standard protocols that you may find useful for product applications.

- [Western Blot](#)
- [Blocking Peptides](#)
- [Dot Blot](#)
- [Immunohistochemistry](#)
- [Immunofluorescence](#)
- [Immunoprecipitation](#)
- [Flow Cytometry](#)
- [Cell Culture](#)

**CENPT Polyclonal Antibody - Images**



Paraformaldehyde-fixed, paraffin embedded (Mouse uterus); Antigen retrieval by boiling in sodium citrate buffer (pH6.0) for 15min; Block endogenous peroxidase by 3% hydrogen peroxide for 20 minutes; Blocking buffer (normal goat serum) at 37°C for 30min; Antibody incubation with (CENPT) Polyclonal Antibody, Unconjugated (bs-6901R) at 1:200 overnight at 4°C, followed by operating according to SP Kit(Rabbit) (sp-0023) instructions and DAB staining.