

**RASD2 Polyclonal Antibody**  
**Purified Rabbit Polyclonal Antibody (Pab)**  
**Catalog # AP58569****Specification**

---

**RASD2 Polyclonal Antibody - Product Information**

Application	WB, IHC-P, IHC-F, IF, E
Primary Accession	<a href="#">Q96D21</a>
Reactivity	Rat, Dog
Host	Rabbit
Clonality	Polyclonal
Calculated MW	30 KDa
Physical State	Liquid
Immunogen	KLH conjugated synthetic peptide derived from human RASD2
Epitope Specificity	201-266/266
Isotype	IgG
<b>Purity</b>	
affinity purified by Protein A	
Buffer	0.01M TBS (pH7.4) with 1% BSA, 0.02% Proclin300 and 50% Glycerol.
SUBCELLULAR LOCATION	Cell membrane; Lipid-anchor.
SIMILARITY	Belongs to the small GTPase superfamily. RasD family.
SUBUNIT	Monomer (Potential). Interacts with PIK3CA and UBE2I. Interacts with GNB1, GNB2 and GNB3. Interacts with HTT; interacts with mutant HTT (mHTT) with a much higher affinity than wild type HTT. Farnesylated. Farnesylation is required for membrane targeting.
Post-translational modifications	
Important Note	This product as supplied is intended for research use only, not for use in human, therapeutic or diagnostic applications.

**Background Descriptions**

GTPase signaling protein that binds to and hydrolyzes GTP. Regulates signaling pathways involving G-proteins-coupled receptor and heterotrimeric proteins such as GNB1, GNB2 and GNB3. May be involved in selected striatal competencies, mainly locomotor activity and motor coordination.

**RASD2 Polyclonal Antibody - Additional Information****Gene ID** 23551**Other Names**

GTP-binding protein Rhes, Ras homolog enriched in striatum, Tumor endothelial marker 2, RASD2, TEM2

**Target/Specificity**

Pancreatic endocrine cells (islets of Langerhans).

**Dilution**

WB ~ 1:1000  
IHC-P ~ N/A  
IHC-F ~ N/A  
IF ~ 1:50 ~ 200  
E ~ N/A

**Format**

0.01M TBS(pH7.4), 0.09% (W/V) sodium azide and 50% Glyce

**Storage**

Store at -20 °C for one year. Avoid repeated freeze/thaw cycles. When reconstituted in sterile pH 7.4 0.01M PBS or diluent of antibody the antibody is stable for at least two weeks at 2-4 °C.

**RASD2 Polyclonal Antibody - Protein Information**

**Name** RASD2

**Synonyms** TEM2

**Function**

GTPase signaling protein that binds to and hydrolyzes GTP. Regulates signaling pathways involving G-proteins-coupled receptor and heterotrimeric proteins such as GNB1, GNB2 and GNB3. May be involved in selected striatal competencies, mainly locomotor activity and motor coordination.

**Cellular Location**

Cell membrane; Lipid-anchor

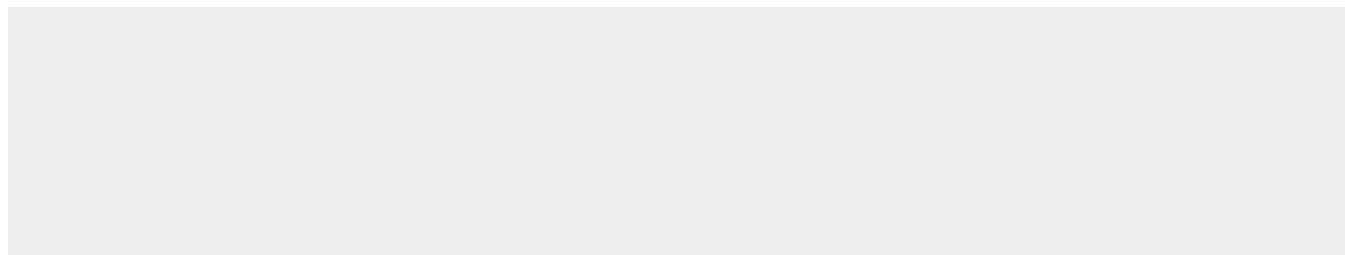
**Tissue Location**

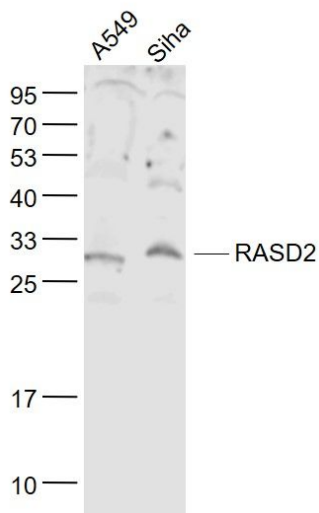
Pancreatic endocrine cells (islets of Langerhans).

**RASD2 Polyclonal Antibody - Protocols**

Provided below are standard protocols that you may find useful for product applications.

- [Western Blot](#)
- [Blocking Peptides](#)
- [Dot Blot](#)
- [Immunohistochemistry](#)
- [Immunofluorescence](#)
- [Immunoprecipitation](#)
- [Flow Cytometry](#)
- [Cell Culture](#)

**RASD2 Polyclonal Antibody - Images**



**Sample:**

A549(Human) Cell Lysate at 30 ug

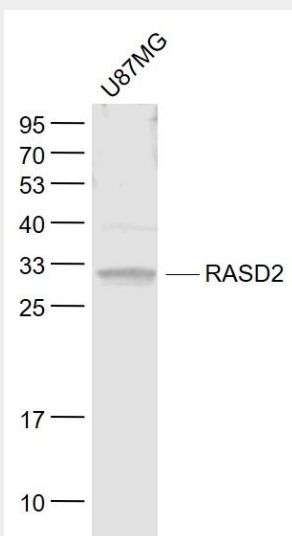
SiHa(Human) Cell Lysate at 30 ug

Primary: Anti- RASD2 (bs-7006R) at 1/1000 dilution

Secondary: IRDye800CW Goat Anti-Rabbit IgG at 1/20000 dilution

Predicted band size: 30 kD

Observed band size: 30 kD



**Sample:**

U87MG(Human) Cell Lysate at 30 ug

Primary: Anti- RASD2 (bs-7006R) at 1/1000 dilution

Secondary: IRDye800CW Goat Anti-Rabbit IgG at 1/20000 dilution

Predicted band size: 30 kD

Observed band size: 30 kD