

SPANX Polyclonal Antibody
Purified Rabbit Polyclonal Antibody (Pab)
Catalog # AP58572**Specification****SPANX Polyclonal Antibody - Product Information**

Application	WB, IHC-P, IHC-F, IF, E
Primary Accession	Q9NY87
Host	Rabbit
Clonality	Polyclonal
Calculated MW	10.7 KDa
Physical State	Liquid
Immunogen	KLH conjugated synthetic peptide derived from human SPANX
Epitope Specificity	21-97/97
Isotype	IgG
Purity	
affinity purified by Protein A	
Buffer	0.01M TBS (pH7.4) with 1% BSA, 0.02% Proclin300 and 50% Glycerol.
SUBCELLULAR LOCATION	Cytoplasm. Nucleus. Note=Associated with nuclear craters.
SIMILARITY	Belongs to the SPAN-X family.
Important Note	This product as supplied is intended for research use only, not for use in human, therapeutic or diagnostic applications.

Background Descriptions

Tissue specificity: Detected in testis, melanoma and bladder carcinoma.

SPANX Polyclonal Antibody - Additional Information

Gene ID 64663

Other Names

Sperm protein associated with the nucleus on the X chromosome C, Cancer/testis antigen 11.3, CT11.3 {ECO:0000312|HGNC:HGNC:14331}, Cancer/testis-associated protein CTp11 {ECO:0000312|EMBL:CAB75344.1}, Nuclear-associated protein SPAN-Xc, SPANX-C {ECO:0000312|EMBL:AAW47309.1}, SPANX family member C, SPANXC

Target/Specificity

Detected in testis, melanoma and bladder carcinoma.

Dilution

WB~~1:1000<br \>IHC-P~~N/A<br \>IHC-F~~N/A<br \>IF~~1:50~200<br \>E~~N/A

Format

0.01M TBS(pH7.4), 0.09% (W/V) sodium azide and 50% Glyce

Storage

Store at -20 °C for one year. Avoid repeated freeze/thaw cycles. When reconstituted in sterile pH 7.4 0.01M PBS or diluent of antibody the antibody is stable for at least two weeks at 2-4 °C.

SPANX Polyclonal Antibody - Protein Information

Name SPANXC

Cellular Location

Cytoplasm. Nucleus. Note=Associated with nuclear craters

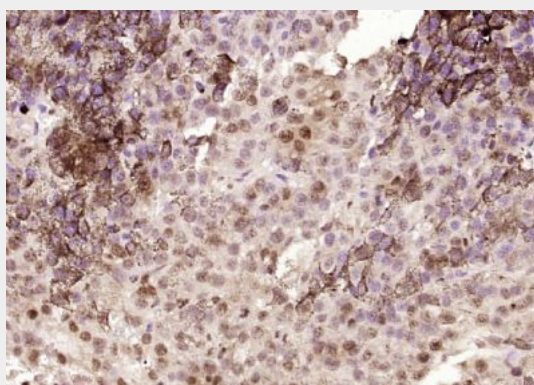
Tissue Location

Detected in testis, melanoma and bladder carcinoma.

SPANX Polyclonal Antibody - Protocols

Provided below are standard protocols that you may find useful for product applications.

- [Western Blot](#)
- [Blocking Peptides](#)
- [Dot Blot](#)
- [Immunohistochemistry](#)
- [Immunofluorescence](#)
- [Immunoprecipitation](#)
- [Flow Cytometry](#)
- [Cell Culture](#)

SPANX Polyclonal Antibody - Images

Paraformaldehyde-fixed, paraffin embedded (Human melanoma); Antigen retrieval by boiling in sodium citrate buffer (pH6.0) for 15min; Block endogenous peroxidase by 3% hydrogen peroxide for 20 minutes; Blocking buffer (normal goat serum) at 37°C for 30min; Antibody incubation with (SPANX) Polyclonal Antibody, Unconjugated (bs-7012R) at 1:400 overnight at 4°C, followed by operating according to SP Kit(Rabbit) (sp-0023) instructions and DAB staining.