

LRRC52 Antibody (C-term)
Affinity Purified Rabbit Polyclonal Antibody (Pab)
Catalog # AP5857b**Specification**

LRRC52 Antibody (C-term) - Product Information

Application	WB,E
Primary Accession	Q8N7C0
Other Accession	NP_001005214.2
Reactivity	Human
Host	Rabbit
Clonality	Polyclonal
Isotype	Rabbit IgG
Calculated MW	35126
Antigen Region	267-296

LRRC52 Antibody (C-term) - Additional Information**Gene ID** 440699**Other Names**

Leucine-rich repeat-containing protein 52, BK channel auxiliary gamma subunit LRRC52, LRRC52

Target/Specificity

This LRRC52 antibody is generated from rabbits immunized with a KLH conjugated synthetic peptide between 267-296 amino acids from the C-terminal region of human LRRC52.

Dilution

WB~~1:1000

Format

Purified polyclonal antibody supplied in PBS with 0.09% (W/V) sodium azide. This antibody is purified through a protein A column, followed by peptide affinity purification.

Storage

Maintain refrigerated at 2-8°C for up to 2 weeks. For long term storage store at -20°C in small aliquots to prevent freeze-thaw cycles.

Precautions

LRRC52 Antibody (C-term) is for research use only and not for use in diagnostic or therapeutic procedures.

LRRC52 Antibody (C-term) - Protein Information**Name** LRRC52

Function Auxiliary protein of the large-conductance, voltage and calcium-activated potassium channel (BK alpha). Modulates gating properties by producing a marked shift in the BK channel's

voltage dependence of activation in the hyperpolarizing direction, and in the absence of calcium. KCNU1 channel auxiliary protein. Modulates KCNU1 gating properties.

Cellular Location

Cell membrane; Single-pass membrane protein. Note=Expression at the cell surface may require the presence of KCNU1

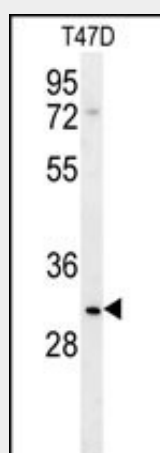
Tissue Location

Mainly expressed in testis and skeletal muscle.

LRRC52 Antibody (C-term) - Protocols

Provided below are standard protocols that you may find useful for product applications.

- [Western Blot](#)
- [Blocking Peptides](#)
- [Dot Blot](#)
- [Immunohistochemistry](#)
- [Immunofluorescence](#)
- [Immunoprecipitation](#)
- [Flow Cytometry](#)
- [Cell Culture](#)

LRRC52 Antibody (C-term) - Images

LRRC52 Antibody (C-term) (Cat. #AP5857b) western blot analysis in T47D cell line lysates (35ug/lane). This demonstrates the LRRC52 antibody detected the LRRC52 protein (arrow).