

Supervillin Polyclonal Antibody
Purified Rabbit Polyclonal Antibody (Pab)
Catalog # AP58602**Specification**

Supervillin Polyclonal Antibody - Product Information

Application	WB
Primary Accession	O95425
Reactivity	Rat, Pig, Dog, Bovine
Host	Rabbit
Clonality	Polyclonal
Calculated MW	247746

Supervillin Polyclonal Antibody - Additional Information**Gene ID** 6840**Other Names**

Supervillin, Archvillin, p205/p250, SVIL {ECO:0000303|PubMed:9867483}

Format

0.01M TBS(pH7.4), 0.09% (W/V) sodium azide and 50% Glyce

Storage

Store at -20 °C for one year. Avoid repeated freeze/thaw cycles. When reconstituted in sterile pH 7.4 0.01M PBS or diluent of antibody the antibody is stable for at least two weeks at 2-4 °C.

Supervillin Polyclonal Antibody - Protein Information**Name** SVIL {ECO:0000303|PubMed:9867483}**Function**

[Isoform 1]: Forms a high-affinity link between the actin cytoskeleton and the membrane. Is among the first costameric proteins to assemble during myogenesis and it contributes to myogenic membrane structure and differentiation (PubMed:12711699). Appears to be involved in myosin II assembly. May modulate myosin II regulation through MLCK during cell spreading, an initial step in cell migration. May play a role in invadopodial function (PubMed:19109420).

Cellular Location

Cell membrane; Peripheral membrane protein; Cytoplasmic side. Cytoplasm, cytoskeleton. Cell projection, invadopodium. Cell projection, podosome. Midbody {ECO:0000250|UniProtKB:O46385}. Cleavage furrow {ECO:0000250|UniProtKB:O46385}. Note= Tightly associated with both actin filaments and plasma membranes

Tissue Location

Expressed in many tissues. Most abundant in muscle, bone marrow, thyroid gland and salivary

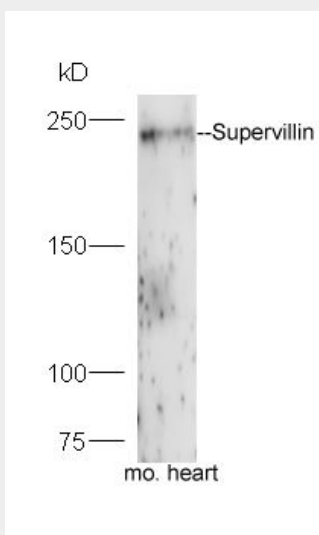
gland. Isoform 1 (archvillin) is muscle specific.

Supervillin Polyclonal Antibody - Protocols

Provided below are standard protocols that you may find useful for product applications.

- [Western Blot](#)
- [Blocking Peptides](#)
- [Dot Blot](#)
- [Immunohistochemistry](#)
- [Immunofluorescence](#)
- [Immunoprecipitation](#)
- [Flow Cytometry](#)
- [Cell Culture](#)

Supervillin Polyclonal Antibody - Images



Protein: mouse heart lysate;

Primary: rabbit Anti-Supervillin (bs-7123R) at 1:300;

Secondary: HRP conjugated Goat-Anti-rabbit IgG(bs-0295G-HRP) at 1: 5000;

Predicted band size:248 kD

Observed band size:248 kD