

MAL2 Polyclonal Antibody
Purified Rabbit Polyclonal Antibody (Pab)
Catalog # AP58622**Specification**

MAL2 Polyclonal Antibody - Product Information

Application	IHC-P
Primary Accession	O969L2
Reactivity	Rat, Pig, Bovine
Host	Rabbit
Clonality	Polyclonal
Calculated MW	19125

MAL2 Polyclonal Antibody - Additional Information**Gene ID** 114569**Other Names**

Protein MAL2, MAL2

Format

0.01M TBS(pH7.4), 0.09% (W/V) sodium azide and 50% Glyce

Storage

Store at -20 °C for one year. Avoid repeated freeze/thaw cycles. When reconstituted in sterile pH 7.4 0.01M PBS or diluent of antibody the antibody is stable for at least two weeks at 2-4 °C.

MAL2 Polyclonal Antibody - Protein Information**Name** MAL2**Function**

Member of the machinery of polarized transport. Required for the indirect transcytotic route at the step of the egress of the transcytosing cargo from perinuclear endosomes in order for it to travel to the apical surface via a raft-dependent pathway.

Cellular Location

Cell membrane; Multi-pass membrane protein. Apical cell membrane; Multi-pass membrane protein. Endomembrane system Cytoplasm, perinuclear region. Note=Associated with lipid rafts. In polarized epithelial cells, restricted to the apical surface. In hepatocytes, as well as in polarized hepatoma Hep-G2 cells, found in the canalicular membrane, equivalent to the apical surface, beneath the canalicular actin cytoskeleton. In non-polarized Hep-G2 cells, distributed to the perinuclear region

Tissue Location

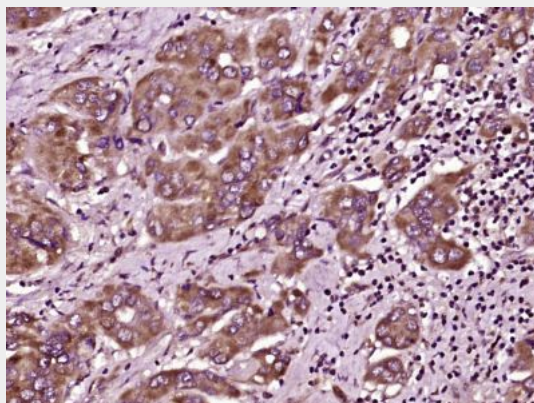
Predominantly expressed in kidney, lung, and liver. Also found in thyroid gland, stomach and, at lower levels in testis and small intestine.

MAL2 Polyclonal Antibody - Protocols

Provided below are standard protocols that you may find useful for product applications.

- [Western Blot](#)
- [Blocking Peptides](#)
- [Dot Blot](#)
- [Immunohistochemistry](#)
- [Immunofluorescence](#)
- [Immunoprecipitation](#)
- [Flow Cytometry](#)
- [Cell Culture](#)

MAL2 Polyclonal Antibody - Images



Paraformaldehyde-fixed, paraffin embedded (human liver carcinoma); Antigen retrieval by boiling in sodium citrate buffer (pH6.0) for 15min; Block endogenous peroxidase by 3% hydrogen peroxide for 20 minutes; Blocking buffer (normal goat serum) at 37°C for 30min; Antibody incubation with (MAL2) Polyclonal Antibody, Unconjugated (bs-7175R) at 1:400 overnight at 4°C, followed by operating according to SP Kit(Rabbit) (sp-0023) instructions and DAB staining.