

**SUSD4 Polyclonal Antibody**  
**Purified Rabbit Polyclonal Antibody (Pab)**  
**Catalog # AP58646****Specification**

---

**SUSD4 Polyclonal Antibody - Product Information**

Application	WB
Primary Accession	<a href="#">Q5VX71</a>
Reactivity	Rat, Bovine
Host	Rabbit
Clonality	Polyclonal
Calculated MW	53778

**SUSD4 Polyclonal Antibody - Additional Information****Gene ID** 55061**Other Names**

Sushi domain-containing protein 4, SUSD4

**Format**

0.01M TBS(pH7.4), 0.09% (W/V) sodium azide and 50% Glyce

**Storage**

Store at -20 °C for one year. Avoid repeated freeze/thaw cycles. When reconstituted in sterile pH 7.4 0.01M PBS or diluent of antibody the antibody is stable for at least two weeks at 2-4 °C.

**SUSD4 Polyclonal Antibody - Protein Information****Name** SUSD4**Function**

Acts as a complement inhibitor by disrupting the formation of the classical C3 convertase. Isoform 3 inhibits the classical complement pathway, while membrane-bound isoform 1 inhibits deposition of C3b via both the classical and alternative complement pathways.

**Cellular Location**

[Isoform 1]: Membrane; Single-pass type I membrane protein

**Tissue Location**

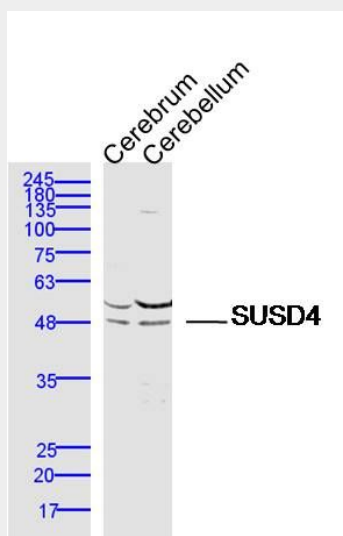
Isoform 3 is the predominant isoform in all tissues except cortex, cerebellum, kidney, and breast. Isoform 1 is found primarily in the esophagus and the brain

**SUSD4 Polyclonal Antibody - Protocols**

Provided below are standard protocols that you may find useful for product applications.

- [Western Blot](#)
- [Blocking Peptides](#)
- [Dot Blot](#)
- [Immunohistochemistry](#)
- [Immunofluorescence](#)
- [Immunoprecipitation](#)
- [Flow Cytometry](#)
- [Cell Culture](#)

### SUSD4 Polyclonal Antibody - Images



**Sample:**

Cerebrum (Mouse) Lysate at 40 ug

Cerebellum (Mouse) Lysate at 40 ug

Primary: Anti- SUSD4 (bs-7330R) at 1/300 dilution

Secondary: IRDye800CW Goat Anti-Rabbit IgG at 1/20000 dilution

Predicted band size: 49 kD

Observed band size: 49 kD