

**beta Defensin 3 Polyclonal Antibody**  
**Purified Rabbit Polyclonal Antibody (Pab)**  
**Catalog # AP58656**

**Specification**

**beta Defensin 3 Polyclonal Antibody - Product Information**

Application	IHC-P, IHC-F, IF, ICC, E
Primary Accession	<a href="#">P81534</a>
Host	Rabbit
Clonality	Polyclonal
Calculated MW	5 KDa
Physical State	Liquid
Immunogen	KLH conjugated synthetic peptide derived from human beta Defensin 3
Epitope Specificity	23-67/67
Isotype	IgG
<b>Purity</b>	
affinity purified by Protein A	
Buffer	0.01M TBS (pH7.4) with 1% BSA, 0.02% Proclin300 and 50% Glycerol.
SUBCELLULAR LOCATION	Secreted.
SIMILARITY	Belongs to the beta-defensin family.
Important Note	This product as supplied is intended for research use only, not for use in human, therapeutic or diagnostic applications.

**Background Descriptions**

Exhibits antimicrobial activity against Gram-positive bacteria S.aureus and S.pyogenes, Gram-negative bacteria P.aeruginosa and E.coli and the yeast C.albicans. Kills multiresistant S.aureus and vancomycin-resistant E.faecium. No significant hemolytic activity was observed.

**beta Defensin 3 Polyclonal Antibody - Additional Information**

**Gene ID** 414325;55894

**Other Names**

Beta-defensin 103, Beta-defensin 3, BD-3, DEFB-3, HBD3, hBD-3, Defensin, beta 103, Defensin-like protein, DEFB103A, BD3, DEFB103, DEFB3

**Target/Specificity**

Highly expressed in skin and tonsils, and to a lesser extent in trachea, uterus, kidney, thymus, adenoid, pharynx and tongue. Low expression in salivary gland, bone marrow, colon, stomach, polyp and larynx. No expression in small intestine.

**Dilution**

<span class = "dilution\_IHC-P">IHC-P~~N/A</span><br \><span class = "dilution\_IHC-F">IHC-F~~N/A</span><br \><span class = "dilution\_IF">IF~~1:50~200</span><br \><span class = "dilution\_ICC">ICC~~N/A</span><br \><span class = "dilution\_E">E~~N/A</span>

**Format**

0.01M TBS(pH7.4), 0.09% (W/V) sodium azide and 50% Glyce

**Storage**

Store at -20 °C for one year. Avoid repeated freeze/thaw cycles. When reconstituted in sterile pH 7.4 0.01M PBS or diluent of antibody the antibody is stable for at least two weeks at 2-4 °C.

**beta Defensin 3 Polyclonal Antibody - Protein Information**

**Name** DEFB103A

**Synonyms** BD3, DEFB103, DEFB3

**Function**

Exhibits antimicrobial activity against Gram-positive bacteria *S.aureus* and *S.pyogenes*, Gram-negative bacteria *P.aeruginosa* and *E.coli* and the yeast *C.albicans*. Kills multiresistant *S.aureus* and vancomycin-resistant *E.faecium*. No significant hemolytic activity was observed.

**Cellular Location**

Secreted.

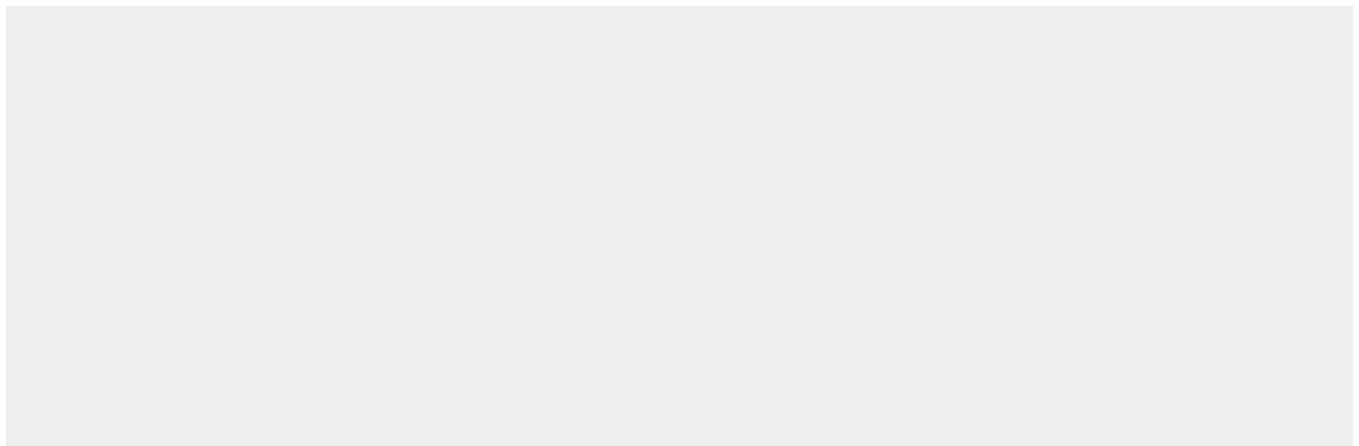
**Tissue Location**

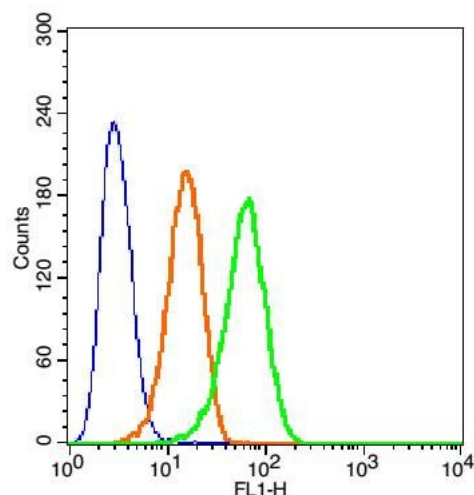
Highly expressed in skin and tonsils, and to a lesser extent in trachea, uterus, kidney, thymus, adenoid, pharynx and tongue. Low expression in salivary gland, bone marrow, colon, stomach, polyp and larynx. No expression in small intestine

**beta Defensin 3 Polyclonal Antibody - Protocols**

Provided below are standard protocols that you may find useful for product applications.

- [Western Blot](#)
- [Blocking Peptides](#)
- [Dot Blot](#)
- [Immunohistochemistry](#)
- [Immunofluorescence](#)
- [Immunoprecipitation](#)
- [Flow Cytometry](#)
- [Cell Culture](#)

**beta Defensin 3 Polyclonal Antibody - Images**



Blank control(blue): Hep G2 Cells(fixed with 2% paraformaldehyde (10 min) and then permeabilized with ice-cold 90% methanol for 30 min on ice).

Primary Antibody: Rabbit Anti-beta Defensin 3/FITC Conjugated antibody (bs-7378R-FITC), Dilution: 1  $\mu$ g in 100  $\mu$ L 1X PBS containing 0.5% BSA;

Isotype Control Antibody: Rabbit IgG/FITC(orange) ,used under the same conditions.