

CPB2 Polyclonal Antibody
Purified Rabbit Polyclonal Antibody (Pab)
Catalog # AP58677**Specification**

CPB2 Polyclonal Antibody - Product Information

| | |
|-------------------|------------------------|
| Application | IHC-P |
| Primary Accession | Q96IY4 |
| Reactivity | Rat, Dog, Bovine |
| Host | Rabbit |
| Clonality | Polyclonal |
| Calculated MW | 48424 |

CPB2 Polyclonal Antibody - Additional Information**Gene ID** 1361**Other Names**

Carboxypeptidase B2, 3.4.17.20, Carboxypeptidase U, CPU, Plasma carboxypeptidase B, pCPB, Thrombin-activable fibrinolysis inhibitor, TAFI, CPB2

Format

0.01M TBS(pH7.4), 0.09% (W/V) sodium azide and 50% Glyce

Storage

Store at -20 °C for one year. Avoid repeated freeze/thaw cycles. When reconstituted in sterile pH 7.4 0.01M PBS or diluent of antibody the antibody is stable for at least two weeks at 2-4 °C.

CPB2 Polyclonal Antibody - Protein Information**Name** CPB2**Function**

Cleaves C-terminal arginine or lysine residues from biologically active peptides such as kinins or anaphylatoxins in the circulation thereby regulating their activities. Down-regulates fibrinolysis by removing C-terminal lysine residues from fibrin that has already been partially degraded by plasmin.

Cellular Location

Secreted.

Tissue Location

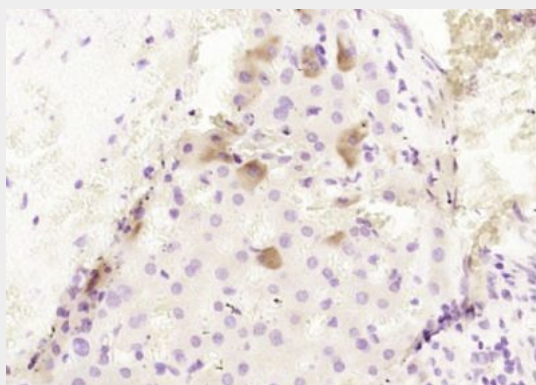
Plasma; synthesized in the liver.

CPB2 Polyclonal Antibody - Protocols

Provided below are standard protocols that you may find useful for product applications.

- [Western Blot](#)
- [Blocking Peptides](#)
- [Dot Blot](#)
- [Immunohistochemistry](#)
- [Immunofluorescence](#)
- [Immunoprecipitation](#)
- [Flow Cytometry](#)
- [Cell Culture](#)

CPB2 Polyclonal Antibody - Images



Paraformaldehyde-fixed, paraffin embedded (human liver); Antigen retrieval by boiling in sodium citrate buffer (pH6.0) for 15min; Block endogenous peroxidase by 3% hydrogen peroxide for 20 minutes; Blocking buffer (normal goat serum) at 37°C for 30min; Antibody incubation with (CPB2) Polyclonal Antibody, Unconjugated (bs-7547R) at 1:200 overnight at 4°C, followed by operating according to SP Kit(Rabbit) (sp-0023) instructions and DAB staining.