

**RNF122 Polyclonal Antibody**  
**Purified Rabbit Polyclonal Antibody (Pab)**  
**Catalog # AP58682****Specification****RNF122 Polyclonal Antibody - Product Information**

Application	WB, IHC-P, IHC-F, IF, E
Primary Accession	<a href="#">Q9H9V4</a>
Reactivity	Rat, Pig, Dog, Bovine
Host	Rabbit
Clonality	Polyclonal
Calculated MW	17 KDa
Physical State	Liquid
Immunogen	KLH conjugated synthetic peptide derived from human RNF122
Epitope Specificity	71-155/155
Isotype	IgG
<b>Purity</b>	
affinity purified by Protein A	
Buffer	0.01M TBS (pH7.4) with 1% BSA, 0.02% Proclin300 and 50% Glycerol.
SUBCELLULAR LOCATION	Golgi apparatus. Endoplasmic reticulum. Membrane; Single-pass membrane protein (Potential).
SIMILARITY	Contains 1 RING-type zinc finger.
Important Note	This product as supplied is intended for research use only, not for use in human, therapeutic or diagnostic applications.

**Background Descriptions**

May induce necrosis and apoptosis. May play a role in cell viability.

**RNF122 Polyclonal Antibody - Additional Information**

**Gene ID** 79845

**Other Names**

RING finger protein 122, RNF122

**Target/Specificity**

Widely expressed in several tissues and cell lines.

**Dilution**

WB~1:1000  
IHC-P~N/A  
IHC-F~N/A  
IF~1:50~200  
E~N/A

**Format**

0.01M TBS(pH7.4), 0.09% (W/V) sodium azide and 50% Glyce

**Storage**

Store at -20 °C for one year. Avoid repeated freeze/thaw cycles. When reconstituted in sterile pH 7.4 0.01M PBS or diluent of antibody the antibody is stable for at least two weeks at 2-4 °C.

**RNF122 Polyclonal Antibody - Protein Information**

**Name** RNF122

**Function**

May induce necrosis and apoptosis. May play a role in cell viability.

**Cellular Location**

Golgi apparatus. Endoplasmic reticulum. Membrane; Single-pass membrane protein

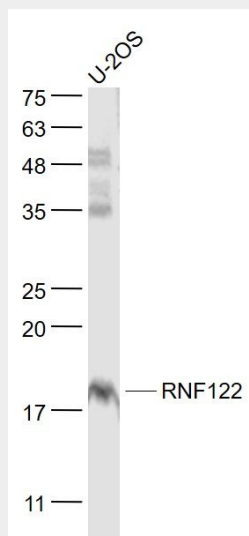
**Tissue Location**

Widely expressed in several tissues and cell lines.

**RNF122 Polyclonal Antibody - Protocols**

Provided below are standard protocols that you may find useful for product applications.

- [Western Blot](#)
- [Blocking Peptides](#)
- [Dot Blot](#)
- [Immunohistochemistry](#)
- [Immunofluorescence](#)
- [Immunoprecipitation](#)
- [Flow Cytometry](#)
- [Cell Culture](#)

**RNF122 Polyclonal Antibody - Images**

Sample:

U-2OS(Human) Cell Lysate at 30 ug  
Primary: Anti- RNF122 (bs-7568R) at 1/1000 dilution  
Secondary: IRDye800CW Goat Anti-Rabbit IgG at 1/20000 dilution  
Predicted band size: 17 kD  
Observed band size: 18 kD