

**SLC14A1 Polyclonal Antibody**  
**Purified Rabbit Polyclonal Antibody (Pab)**  
**Catalog # AP58698****Specification**

---

**SLC14A1 Polyclonal Antibody - Product Information**

|                   |                        |
|-------------------|------------------------|
| Application       | WB                     |
| Primary Accession | <a href="#">Q13336</a> |
| Reactivity        | Rat, Pig, Bovine       |
| Host              | Rabbit                 |
| Clonality         | Polyclonal             |
| Calculated MW     | 42528                  |

**SLC14A1 Polyclonal Antibody - Additional Information****Gene ID** 6563**Other Names**

Urea transporter 1, Solute carrier family 14 member 1, Urea transporter, erythrocyte, SLC14A1, HUT11, JK, RACH1, UT1, UTE

**Format**

0.01M TBS(pH7.4), 0.09% (W/V) sodium azide and 50% Glyce

**Storage**

Store at -20 °C for one year. Avoid repeated freeze/thaw cycles. When reconstituted in sterile pH 7.4 0.01M PBS or diluent of antibody the antibody is stable for at least two weeks at 2-4 °C.

**SLC14A1 Polyclonal Antibody - Protein Information****Name** SLC14A1**Synonyms** HUT11, JK, RACH1, UT1, UTE**Function**

Mediates the transport of urea driven by a concentration gradient across the cell membrane of erythrocytes (PubMed: [7989337](http://www.uniprot.org/citations/7989337), PubMed: [10514515](http://www.uniprot.org/citations/10514515), PubMed: [7797558](http://www.uniprot.org/citations/7797558), PubMed: [8997401](http://www.uniprot.org/citations/8997401)). Also mediates the transport of urea across the cell membrane of the renal inner medullary collecting duct which is critical to the urinary concentrating mechanism (By similarity). Facilitates water transport in erythrocytes (By similarity).

**Cellular Location**

Cell membrane; Multi-pass membrane protein. Basolateral cell membrane {ECO:0000250|UniProtKB:Q8VHL0}; Multi-pass membrane protein. Note=Restricted to the basolateral membrane in various portions of the urothelium. {ECO:0000250|UniProtKB:Q8VHL0}

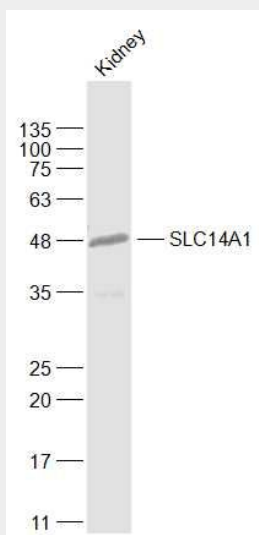
**Tissue Location**

Detected in erythrocytes (at protein level) (PubMed:23219802). Expressed in spleen erythroblasts and tumoral kidney (PubMed:7989337).

**SLC14A1 Polyclonal Antibody - Protocols**

Provided below are standard protocols that you may find useful for product applications.

- [Western Blot](#)
- [Blocking Peptides](#)
- [Dot Blot](#)
- [Immunohistochemistry](#)
- [Immunofluorescence](#)
- [Immunoprecipitation](#)
- [Flow Cytometry](#)
- [Cell Culture](#)

**SLC14A1 Polyclonal Antibody - Images****Sample:**

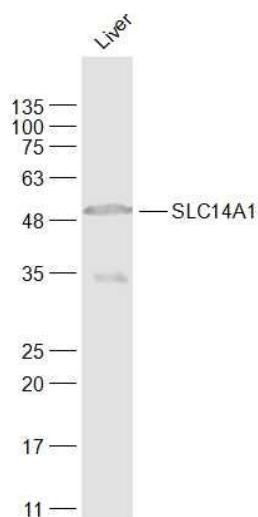
Kidney (Mouse) Lysate at 40 ug

Primary: Anti-SLC14A1 (bs-7639R) at 1/1000 dilution

Secondary: IRDye800CW Goat Anti-Rabbit IgG at 1/20000 dilution

Predicted band size: 43 kD

Observed band size: 48 kD



**Sample:**

Liver (Mouse) Lysate at 40 ug

Primary: Anti-SLC14A1 (bs-7639R) at 1/1000 dilution

Secondary: IRDye800CW Goat Anti-Rabbit IgG at 1/20000 dilution

Predicted band size: 43 kD

Observed band size: 48 kD