

**MIS12 Polyclonal Antibody**  
**Purified Rabbit Polyclonal Antibody (Pab)**  
**Catalog # AP58726****Specification****MIS12 Polyclonal Antibody - Product Information**

|                                |  |
|--------------------------------|--|
| Application                    | WB, IHC-P, IHC-F, IF, E  |
| Primary Accession              | <a href="#">Q9H081</a>   |
| Reactivity                     | Rat, Dog, Bovine   |
| Host                           | Rabbit   |
| Clonality                      | Polyclonal   |
| Calculated MW                  | 24 KDa   |
| Physical State                 | Liquid   |
| Immunogen                      | KLH conjugated synthetic peptide derived from human MIS12  |
| Epitope Specificity            | 11-120/205   |
| Isotype                        | IgG  |
| <b>Purity</b>                  |  |
| affinity purified by Protein A |  |
| Buffer                         | 0.01M TBS (pH7.4) with 1% BSA, 0.02% Proclin300 and 50% Glycerol.  |
| SUBCELLULAR LOCATION           | Nucleus. Chromosome, centromere, kinetochore. Note=Associated with the kinetochore.  |
| SIMILARITY                     | Belongs to the mis12 family.   |
| SUBUNIT                        | Component of the MIS12 complex composed of MIS12, DSN1, NSL1 and PMF1. Also interacts with CASC5, CBX3, CBX5, NDC80 and ZWINT. |
| Important Note                 | This product as supplied is intended for research use only, not for use in human, therapeutic or diagnostic applications.      |

**Background Descriptions**

MIS12 is part of a complex that plays an essential role in chromosome segregation in vertebrates and contributes to mitotic kinetochore assembly.

**MIS12 Polyclonal Antibody - Additional Information**

**Gene ID** 79003

**Other Names**

Protein MIS12 homolog, MIS12 ([http://www.genenames.org/cgi-bin/gene\\_symbol\\_report?hgnc\\_id=24967](http://www.genenames.org/cgi-bin/gene_symbol_report?hgnc_id=24967))  
HGNC:24967

**Dilution**

WB~~1:1000  
IHC-P~~N/A

=["dilution\\_IHC-F">IHC-F~N/A](#)</span><br \><span class  
=["dilution\\_IF">IF~1:50~200](#)</span><br \><span class =["dilution\\_E">E~N/A](#)</span>

### Storage

Store at -20 °C for one year. Avoid repeated freeze/thaw cycles. When reconstituted in sterile pH 7.4 0.01M PBS or diluent of antibody the antibody is stable for at least two weeks at 2-4 °C.

## MIS12 Polyclonal Antibody - Protein Information

**Name** MIS12 ([HGNC:24967](#))

### Function

Part of the MIS12 complex which is required for normal chromosome alignment and segregation and for kinetochore formation during mitosis (PubMed:[12515822](http://www.uniprot.org/citations/12515822), PubMed:[15502821](http://www.uniprot.org/citations/15502821), PubMed:[16585270](http://www.uniprot.org/citations/16585270)). Essential for proper kinetochore microtubule attachments (PubMed:[23891108](http://www.uniprot.org/citations/23891108)).

### Cellular Location

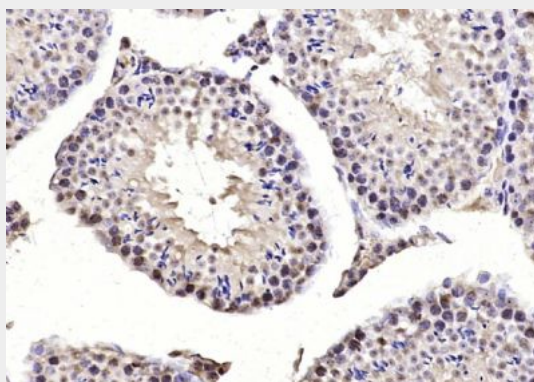
Chromosome, centromere, kinetochore Note=Associated with the kinetochore.

## MIS12 Polyclonal Antibody - Protocols

Provided below are standard protocols that you may find useful for product applications.

- [Western Blot](#)
- [Blocking Peptides](#)
- [Dot Blot](#)
- [Immunohistochemistry](#)
- [Immunofluorescence](#)
- [Immunoprecipitation](#)
- [Flow Cytometry](#)
- [Cell Culture](#)

## MIS12 Polyclonal Antibody - Images



Paraformaldehyde-fixed, paraffin embedded (mouse testis tissue); Antigen retrieval by boiling in sodium citrate buffer (pH6.0) for 15min; Block endogenous peroxidase by 3% hydrogen peroxide

for 20 minutes; Blocking buffer (normal goat serum) at 37°C for 30min; Antibody incubation with (MIS12) Polyclonal Antibody, Unconjugated (bs-7713R) at 1:200 overnight at 4°C, followed by operating according to SP Kit(Rabbit) (sp-0023) instructions and DAB staining.