

SPC25 Polyclonal Antibody
Purified Rabbit Polyclonal Antibody (Pab)
Catalog # AP58727**Specification****SPC25 Polyclonal Antibody - Product Information**

Application	WB, IHC-P, IHC-F, IF, E
Primary Accession	Q9HBM1
Reactivity	Rat, Pig, Dog, Bovine
Host	Rabbit
Clonality	Polyclonal
Calculated MW	26153

SPC25 Polyclonal Antibody - Additional Information**Gene ID** 57405**Other Names**

Kinetochore protein Spc25, hSpc25, SPC25, SPBC25

Dilution

WB~1:1000
IHC-P~N/A
IHC-F~N/A
IF~1:50~200
E~N/A

Format

0.01M TBS(pH7.4), 0.09% (W/V) sodium azide and 50% Glyce

Storage

Store at -20 °C for one year. Avoid repeated freeze/thaw cycles. When reconstituted in sterile pH 7.4 0.01M PBS or diluent of antibody the antibody is stable for at least two weeks at 2-4 °C.

SPC25 Polyclonal Antibody - Protein Information**Name** SPC25**Synonyms** SPBC25**Function**

Acts as a component of the essential kinetochore-associated NDC80 complex, which is required for chromosome segregation and spindle checkpoint activity (PubMed:[14699129](http://www.uniprot.org/citations/14699129), PubMed:[14738735](http://www.uniprot.org/citations/14738735)). Required for kinetochore integrity and the organization of stable microtubule binding sites in the outer plate of the kinetochore (PubMed:[14699129](http://www.uniprot.org/citations/14699129), PubMed:[14738735](http://www.uniprot.org/citations/14738735)). The NDC80 complex synergistically enhances the affinity of the

SKA1 complex for microtubules and may allow the NDC80 complex to track depolymerizing microtubules (PubMed:23085020).

Cellular Location

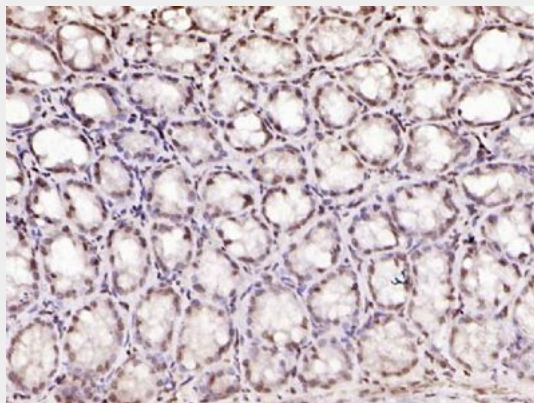
Nucleus. Chromosome, centromere, kinetochore. Note=Localizes to kinetochores from late prophase to anaphase (PubMed:14738735). Localizes specifically to the outer plate of the kinetochore (PubMed:14699129, PubMed:14738735)

SPC25 Polyclonal Antibody - Protocols

Provided below are standard protocols that you may find useful for product applications.

- [Western Blot](#)
- [Blocking Peptides](#)
- [Dot Blot](#)
- [Immunohistochemistry](#)
- [Immunofluorescence](#)
- [Immunoprecipitation](#)
- [Flow Cytometry](#)
- [Cell Culture](#)

SPC25 Polyclonal Antibody - Images



Paraformaldehyde-fixed, paraffin embedded (mouse colon); Antigen retrieval by boiling in sodium citrate buffer (pH6.0) for 15min; Block endogenous peroxidase by 3% hydrogen peroxide for 20 minutes; Blocking buffer (normal goat serum) at 37°C for 30min; Antibody incubation with (SPC25) Polyclonal Antibody, Unconjugated (bs-7716R) at 1:200 overnight at 4°C, followed by operating according to SP Kit(Rabbit) (sp-0023) instructions and DAB staining.