

**WAPL Polyclonal Antibody**  
**Purified Rabbit Polyclonal Antibody (Pab)**  
**Catalog # AP58736****Specification**

---

**WAPL Polyclonal Antibody - Product Information**

Application	IHC-P
Primary Accession	<a href="#">Q7Z5K2</a>
Reactivity	Rat, Pig, Dog, Bovine
Host	Rabbit
Clonality	Polyclonal
Calculated MW	132946

**WAPL Polyclonal Antibody - Additional Information****Gene ID** 23063**Other Names**

Wings apart-like protein homolog, Friend of EBNA2 protein, WAPL cohesin release factor {ECO:0000312|HGNC:HGNC:23293}, WAPL ([http://www.genenames.org/cgi-bin/gene\\_symbol\\_report?hgnc\\_id=23293](http://www.genenames.org/cgi-bin/gene_symbol_report?hgnc_id=23293)) target="\_blank">HGNC:23293</a>), FOE, KIAA0261, WAPAL

**Format**

0.01M TBS(pH7.4), 0.09% (W/V) sodium azide and 50% Glyce

**Storage**

Store at -20 °C for one year. Avoid repeated freeze/thaw cycles. When reconstituted in sterile pH 7.4 0.01M PBS or diluent of antibody the antibody is stable for at least two weeks at 2-4 °C.

**WAPL Polyclonal Antibody - Protein Information****Name** WAPL ([HGNC:23293](#))**Synonyms** FOE, KIAA0261, WAPAL**Function**

Regulator of sister chromatid cohesion in mitosis which negatively regulates cohesin association with chromatin (PubMed:<http://www.uniprot.org/citations/26299517>) target="\_blank">26299517</a>). Involved in both sister chromatid cohesion during interphase and sister-chromatid resolution during early stages of mitosis. Couples DNA replication to sister chromatid cohesion. Cohesion ensures that chromosome partitioning is accurate in both meiotic and mitotic cells and plays an important role in DNA repair.

**Cellular Location**

[Isoform 2]: Nucleus.

**Tissue Location**

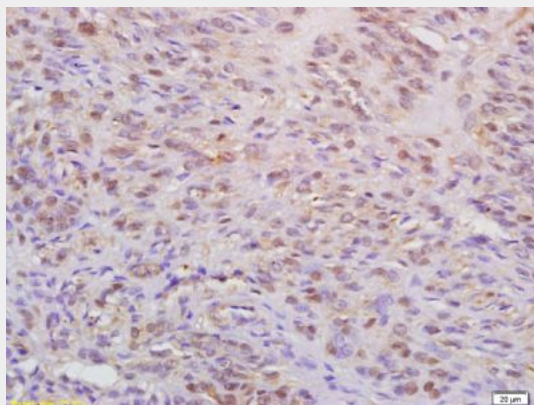
Isoform 1 is highly expressed in uterine cervix tumor. Isoform 2 is widely expressed with a high level in skeletal muscle and heart.

### **WAPL Polyclonal Antibody - Protocols**

Provided below are standard protocols that you may find useful for product applications.

- [Western Blot](#)
- [Blocking Peptides](#)
- [Dot Blot](#)
- [Immunohistochemistry](#)
- [Immunofluorescence](#)
- [Immunoprecipitation](#)
- [Flow Cytometry](#)
- [Cell Culture](#)

### **WAPL Polyclonal Antibody - Images**



Tissue/cell: human cervical carcinoma; 4% Paraformaldehyde-fixed and paraffin-embedded;

Antigen retrieval: citrate buffer ( 0.01M, pH 6.0 ), Boiling bathing for 15min; Block endogenous peroxidase by 3% Hydrogen peroxide for 30min; Blocking buffer (normal goat serum,C-0005) at 37°C for 20 min;

Incubation: Anti-WAPL Polyclonal Antibody, Unconjugated(bs-7733R) 1:200, overnight at 4°C, followed by conjugation to the secondary antibody(SP-0023) and DAB(C-0010) staining