

**AMSH Polyclonal Antibody**  
**Purified Rabbit Polyclonal Antibody (Pab)**  
**Catalog # AP58738****Specification****AMSH Polyclonal Antibody - Product Information**

Application	IHC-P, IHC-F, IF, E
Primary Accession	<a href="#">O95630</a>
Reactivity	Rat, Dog
Host	Rabbit
Clonality	Polyclonal
Calculated MW	47 KDa
Physical State	Liquid
Immunogen	KLH conjugated synthetic peptide derived from human AMSH
Epitope Specificity	331-420/424
Isotype	IgG
<b>Purity</b> affinity purified by Protein A	
Buffer	0.01M TBS (pH7.4) with 1% BSA, 0.02% Proclin300 and 50% Glycerol.
SUBCELLULAR LOCATION	Nucleus. Membrane; Peripheral membrane protein. Cytoplasm. Early endosome.
SIMILARITY	Belongs to the peptidase M67C family. Contains 1 MPN (JAB/Mov34) domain.
Post-translational modifications	Phosphorylated after BMP type I receptor activation. Ubiquitinated by SMURF2 in the presence of RNF11.
Important Note	This product as supplied is intended for research use only, not for use in human, therapeutic or diagnostic applications.

**Background Descriptions**

Zinc metalloprotease that specifically cleaves 'Lys-63'-linked polyubiquitin chains. Does not cleave 'Lys-48'-linked polyubiquitin chains (By similarity). Functions at the endosome and is able to oppose the ubiquitin-dependent sorting of receptors to lysosomes. Plays a role in signal transduction for cell growth and MYC induction mediated by IL-2 and GM-CSF. Potentiates BMP (bone morphogenetic protein) signaling by antagonizing the inhibitory action of SMAD6 and SMAD7.

**AMSH Polyclonal Antibody - Additional Information****Gene ID** 10617**Other Names**

STAM-binding protein, 3.4.19.-, Associated molecule with the SH3 domain of STAM, Endosome-associated ubiquitin isopeptidase, STAMBP, AMSH

**Target/Specificity**

Ubiquitously expressed.

**Dilution**

IHC-P ~ ~ N/A   
 IHC-F ~ ~ N/A   
 IF ~ ~ 1:50 ~ 200   
 E ~ ~ N/A

**Format**

0.01M TBS(pH7.4), 0.09% (W/V) sodium azide and 50% Glyce

**Storage**

Store at -20 °C for one year. Avoid repeated freeze/thaw cycles. When reconstituted in sterile pH 7.4 0.01M PBS or diluent of antibody the antibody is stable for at least two weeks at 2-4 °C.

**AMSH Polyclonal Antibody - Protein Information****Name** STAMBP

**Synonyms** AMSH {ECO:0000303|PubMed:10383417}

**Function**

Zinc metalloprotease that specifically cleaves 'Lys-63'- linked polyubiquitin chains (PubMed:<a href="http://www.uniprot.org/citations/15314065" target="\_blank">15314065</a>, PubMed:<a href="http://www.uniprot.org/citations/23542699" target="\_blank">23542699</a>, PubMed:<a href="http://www.uniprot.org/citations/34425109" target="\_blank">34425109</a>). Does not cleave 'Lys-48'-linked polyubiquitin chains (PubMed:<a href="http://www.uniprot.org/citations/15314065" target="\_blank">15314065</a>). Plays a role in signal transduction for cell growth and MYC induction mediated by IL-2 and GM-CSF (PubMed:<a href="http://www.uniprot.org/citations/10383417" target="\_blank">10383417</a>). Potentiates BMP (bone morphogenetic protein) signaling by antagonizing the inhibitory action of SMAD6 and SMAD7 (PubMed:<a href="http://www.uniprot.org/citations/11483516" target="\_blank">11483516</a>). Has a key role in regulation of cell surface receptor-mediated endocytosis and ubiquitin-dependent sorting of receptors to lysosomes (PubMed:<a href="http://www.uniprot.org/citations/15314065" target="\_blank">15314065</a>, PubMed:<a href="http://www.uniprot.org/citations/17261583" target="\_blank">17261583</a>). Endosomal localization of STAMBP is required for efficient EGFR degradation but not for its internalization (PubMed:<a href="http://www.uniprot.org/citations/15314065" target="\_blank">15314065</a>, PubMed:<a href="http://www.uniprot.org/citations/17261583" target="\_blank">17261583</a>). Involved in the negative regulation of PI3K-AKT-mTOR and RAS-MAP signaling pathways (PubMed:<a href="http://www.uniprot.org/citations/23542699" target="\_blank">23542699</a>).

**Cellular Location**

Nucleus. Membrane; Peripheral membrane protein. Cytoplasm. Early endosome

**Tissue Location**

Ubiquitously expressed.

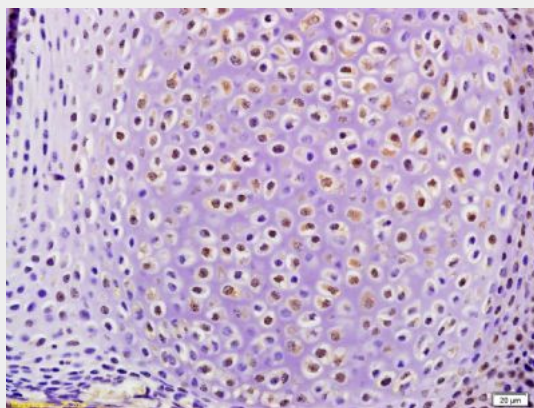
**AMSH Polyclonal Antibody - Protocols**

Provided below are standard protocols that you may find useful for product applications.

- [Western Blot](#)

- [Blocking Peptides](#)
- [Dot Blot](#)
- [Immunohistochemistry](#)
- [Immunofluorescence](#)
- [Immunoprecipitation](#)
- [Flow Cytometry](#)
- [Cell Culture](#)

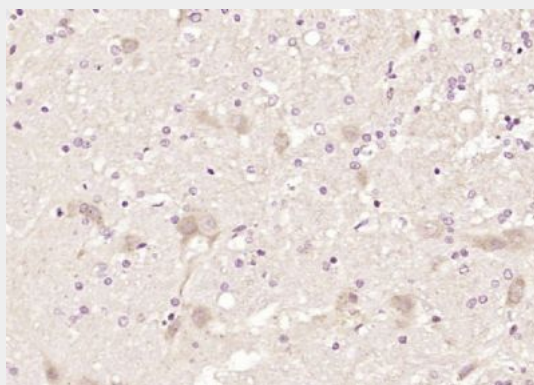
#### AMSH Polyclonal Antibody - Images



Tissue/cell: mouse embryo tissue; 4% Paraformaldehyde-fixed and paraffin-embedded;

Antigen retrieval: citrate buffer ( 0.01M, pH 6.0 ), Boiling bathing for 15min; Block endogenous peroxidase by 3% Hydrogen peroxide for 30min; Blocking buffer (normal goat serum,C-0005) at 37°C for 20 min;

Incubation: Anti-AMSH/STAMBP Polyclonal Antibody, Unconjugated(bs-7735R) 1:200, overnight at 4°C, followed by conjugation to the secondary antibody(SP-0023) and DAB(C-0010) staining



Paraformaldehyde-fixed, paraffin embedded (rat brain); Antigen retrieval by boiling in sodium citrate buffer (pH6.0) for 15min; Block endogenous peroxidase by 3% hydrogen peroxide for 20 minutes; Blocking buffer (normal goat serum) at 37°C for 30min; Antibody incubation with (AMSH) Polyclonal Antibody, Unconjugated (bs-7735R) at 1:200 overnight at 4°C, followed by operating according to SP Kit(Rabbit) (sp-0023) instructions and DAB staining.