

SPECC1L Polyclonal Antibody
Purified Rabbit Polyclonal Antibody (Pab)
Catalog # AP58749**Specification**

SPECC1L Polyclonal Antibody - Product Information

| | |
|-------------------|------------------------|
| Application | WB |
| Primary Accession | Q69YQ0 |
| Reactivity | Rat, Pig, Dog, Bovine |
| Host | Rabbit |
| Clonality | Polyclonal |
| Calculated MW | 124544 |

SPECC1L Polyclonal Antibody - Additional Information**Gene ID** 23384**Other Names**

Cytospin-A, Renal carcinoma antigen NY-REN-22, Sperm antigen with calponin homology and coiled-coil domains 1-like, SPECC1-like protein, SPECC1L, CYTSA, KIAA0376

Format

0.01M TBS(pH7.4), 0.09% (W/V) sodium azide and 50% Glyce

Storage

Store at -20 °C for one year. Avoid repeated freeze/thaw cycles. When reconstituted in sterile pH 7.4 0.01M PBS or diluent of antibody the antibody is stable for at least two weeks at 2-4 °C.

SPECC1L Polyclonal Antibody - Protein Information**Name** SPECC1L**Synonyms** CYTSA, KIAA0376**Function**

Involved in cytokinesis and spindle organization. May play a role in actin cytoskeleton organization and microtubule stabilization and hence required for proper cell adhesion and migration.

Cellular Location

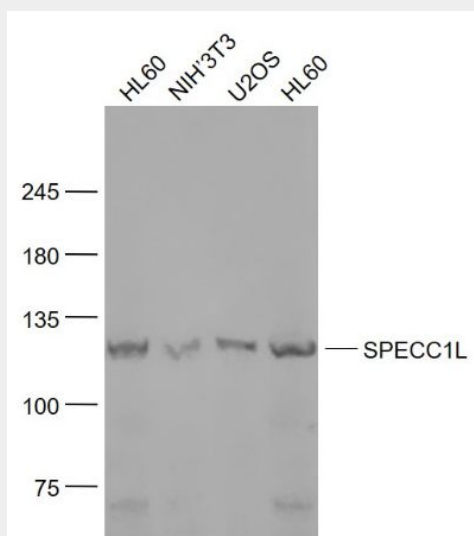
Cytoplasm, cytoskeleton. Cytoplasm, cytoskeleton, spindle. Cell junction, gap junction.
Note=Colocalizes with acetylated alpha- tubulin, gamma-tubulin and F-actin. Also observed in a ring around gamma-tubulin containing centrioles possibly in the microtubule organizing center

SPECC1L Polyclonal Antibody - Protocols

Provided below are standard protocols that you may find useful for product applications.

- [Western Blot](#)
- [Blocking Peptides](#)
- [Dot Blot](#)
- [Immunohistochemistry](#)
- [Immunofluorescence](#)
- [Immunoprecipitation](#)
- [Flow Cytometry](#)
- [Cell Culture](#)

SPECC1L Polyclonal Antibody - Images



Sample:

HL60(Human) Cell Lysate at 30 ug

NIH/3T3(Mouse) Cell Lysate at 30 ug

U2OS(Human) Cell Lysate at 30 ug

HL60 (Human) Cell Lysate at 30 ug

Primary: Anti- SPECC1L (bs-7773R) at 1/1000 dilution

Secondary: IRDye800CW Goat Anti-Rabbit IgG at 1/20000 dilution

Predicted band size: 125 kD

Observed band size: 125 kD