

CDC20B Polyclonal Antibody
Purified Rabbit Polyclonal Antibody (Pab)
Catalog # AP58752

Specification

CDC20B Polyclonal Antibody - Product Information

Application	IHC-P, IHC-F, IF, E
Primary Accession	Q86Y33
Reactivity	Rat, Pig
Host	Rabbit
Clonality	Polyclonal
Calculated MW	57 KDa
Physical State	Liquid
Immunogen	KLH conjugated synthetic peptide derived from human CDC20B
Epitope Specificity	441-519/519
Isotype	IgG
Purity	
affinity purified by Protein A	
Buffer	0.01M TBS (pH7.4) with 1% BSA, 0.02% Proclin300 and 50% Glycerol.
SIMILARITY	Belongs to the WD repeat CDC20/Fizzy family. Contains 7 WD repeats.
Important Note	This product as supplied is intended for research use only, not for use in human, therapeutic or diagnostic applications.

Background Descriptions

The timely destruction of key regulators through ubiquitin-mediated proteolysis ensures the orderly progression of the cell cycle. The APC (anaphase-promoting complex) is a major component of this degradation machinery and its activation is required for the execution of critical events. CDC20B has been implicated as a meiosis specific activator of APC and is required for sporulation in budding yeast.

CDC20B Polyclonal Antibody - Additional Information

Gene ID 166979

Other Names

Cell division cycle protein 20 homolog B, CDC20B

Dilution

IHC-P~~N/A<br \>IHC-F~~N/A<br \>IF~~1:50~200<br \>E~~N/A

Storage

Store at -20 °C for one year. Avoid repeated freeze/thaw cycles. When reconstituted in sterile pH 7.4 0.01M PBS or diluent of antibody the antibody is stable for at least two weeks at 2-4 °C.

CDC20B Polyclonal Antibody - Protein Information

Name CDC20B ([HGNC:24222](#))

Function

Protein regulator of centriole-deuterosome disengagement and subsequently participates in the ciliogenesis in multiciliated cells (MCCs).

Cellular Location

Cytoplasm. Note=Tightly associated to mature deuterosomes.

Tissue Location

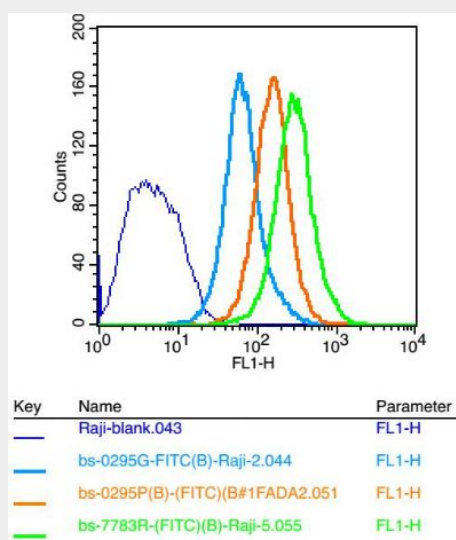
Expressed in multiciliated cells (MCCs).

CDC20B Polyclonal Antibody - Protocols

Provided below are standard protocols that you may find useful for product applications.

- [Western Blot](#)
- [Blocking Peptides](#)
- [Dot Blot](#)
- [Immunohistochemistry](#)
- [Immunofluorescence](#)
- [Immunoprecipitation](#)
- [Flow Cytometry](#)
- [Cell Culture](#)

CDC20B Polyclonal Antibody - Images



Positive control: Raji

Isotype Control Antibody: Rabbit IgG ; Secondary Antibody: Goat anti-rabbit IgG-FITC, Dilution: 1:100 in 1 X PBS containing 0.5% BSA ; Primary Antibody Dilution: 5 µg in 100 µL 1X PBS containing 0.5% BSA.