

**KLHL22 Polyclonal Antibody**  
**Purified Rabbit Polyclonal Antibody (Pab)**  
**Catalog # AP58758****Specification**

---

**KLHL22 Polyclonal Antibody - Product Information**

Application	IHC-P
Primary Accession	<a href="#">Q53GT1</a>
Reactivity	Rat, Bovine
Host	Rabbit
Clonality	Polyclonal
Calculated MW	71667

**KLHL22 Polyclonal Antibody - Additional Information****Gene ID** 84861**Other Names**

Kelch-like protein 22, KLHL22 (<a href="http://www.genenames.org/cgi-bin/gene\_symbol\_report?hgnc\_id=25888" target="\_blank">HGNC:25888</a>)

**Format**

0.01M TBS(pH7.4), 0.09% (W/V) sodium azide and 50% Glyce

**Storage**

Store at -20 °C for one year. Avoid repeated freeze/thaw cycles. When reconstituted in sterile pH 7.4 0.01M PBS or diluent of antibody the antibody is stable for at least two weeks at 2-4 °C.

**KLHL22 Polyclonal Antibody - Protein Information****Name** KLHL22 ([HGNC:25888](#))**Function**

Substrate-specific adapter of a BCR (BTB-CUL3-RBX1) E3 ubiquitin ligase complex required for chromosome alignment and localization of PLK1 at kinetochores. The BCR(KLHL22) ubiquitin ligase complex mediates monoubiquitination of PLK1, leading to PLK1 dissociation from phosphoreceptor proteins and subsequent removal from kinetochores, allowing silencing of the spindle assembly checkpoint (SAC) and chromosome segregation. Monoubiquitination of PLK1 does not lead to PLK1 degradation (PubMed:<a href="http://www.uniprot.org/citations/19995937" target="\_blank">19995937</a>, PubMed:<a href="http://www.uniprot.org/citations/23455478" target="\_blank">23455478</a>). The BCR(KLHL22) ubiquitin ligase complex is also responsible for the amino acid-stimulated 'Lys-48' polyubiquitination and proteasomal degradation of DEPDC5. Through the degradation of DEPDC5, releases the GATOR1 complex-mediated inhibition of the TORC1 pathway. It is therefore an amino acid-dependent activator within the amino acid-sensing branch of the TORC1 pathway, indirectly regulating different cellular processes including cell growth and autophagy (PubMed:<a href="http://www.uniprot.org/citations/29769719" target="\_blank">29769719</a>).

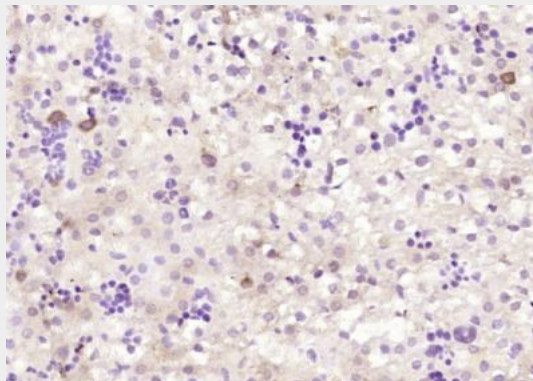
**Cellular Location**

Cytoplasm, cytosol. Cytoplasm, cytoskeleton, microtubule organizing center, centrosome. Cytoplasm, cytoskeleton, spindle. Nucleus. Lysosome Note=Mainly cytoplasmic in prophase and prometaphase. Associates with the mitotic spindle as the cells reach chromosome bi-orientation. Localizes to the centrosomes shortly before cells enter anaphase. After anaphase onset, predominantly associates with the polar microtubules connecting the 2 opposing centrosomes and gradually diffuses into the cytoplasm during telophase (PubMed:23455478). Localizes to the nucleus upon amino acid starvation (PubMed:29769719). Relocalizes to the cytosol and associates with lysosomes when amino acids are available (PubMed:29769719).

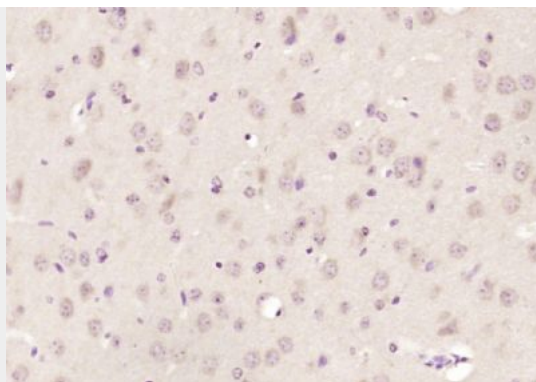
**KLHL22 Polyclonal Antibody - Protocols**

Provided below are standard protocols that you may find useful for product applications.

- [Western Blot](#)
- [Blocking Peptides](#)
- [Dot Blot](#)
- [Immunohistochemistry](#)
- [Immunofluorescence](#)
- [Immunoprecipitation](#)
- [Flow Cytometry](#)
- [Cell Culture](#)

**KLHL22 Polyclonal Antibody - Images**

Paraformaldehyde-fixed, paraffin embedded (rat embryonic liver); Antigen retrieval by boiling in sodium citrate buffer (pH6.0) for 15min; Block endogenous peroxidase by 3% hydrogen peroxide for 20 minutes; Blocking buffer (normal goat serum) at 37°C for 30min; Antibody incubation with (KLHL22) Polyclonal Antibody, Unconjugated (bs-7807R) at 1:200 overnight at 4°C, followed by operating according to SP Kit(Rabbit) (sp-0023) instructions and DAB staining.



Paraformaldehyde-fixed, paraffin embedded (mouse brain); Antigen retrieval by boiling in sodium citrate buffer (pH6.0) for 15min; Block endogenous peroxidase by 3% hydrogen peroxide for 20 minutes; Blocking buffer (normal goat serum) at 37°C for 30min; Antibody incubation with (KLHL22) Polyclonal Antibody, Unconjugated (bs-7807R) at 1:200 overnight at 4°C, followed by operating according to SP Kit(Rabbit) (sp-0023) instructions and DAB staining.