

KNTC1 Polyclonal Antibody
Purified Rabbit Polyclonal Antibody (Pab)
Catalog # AP58759**Specification**

KNTC1 Polyclonal Antibody - Product Information

Application	WB, IHC-P, IHC-F, IF, E
Primary Accession	P50748
Reactivity	Rat, Dog, Bovine
Host	Rabbit
Clonality	Polyclonal
Calculated MW	250749

KNTC1 Polyclonal Antibody - Additional Information**Gene ID** 9735**Other Names**

Kinetochore-associated protein 1, Rough deal homolog, HsROD, Rod, hRod, KNTC1, KIAA0166

Dilution

WB~~1:1000<br \>IHC-P~~N/A<br \>IHC-F~~N/A<br \>IF~~1:50~200<br \>E~~N/A

Format

0.01M TBS(pH7.4), 0.09% (W/V) sodium azide and 50% Glyce

Storage

Store at -20 °C for one year. Avoid repeated freeze/thaw cycles. When reconstituted in sterile pH 7.4 0.01M PBS or diluent of antibody the antibody is stable for at least two weeks at 2-4 °C.

KNTC1 Polyclonal Antibody - Protein Information**Name** KNTC1**Synonyms** KIAA0166, ROD {ECO:0000303|PubMed:284415**Function**

Essential component of the mitotic checkpoint, which prevents cells from prematurely exiting mitosis. Required for the assembly of the dynein-dynactin and MAD1-MAD2 complexes onto kinetochores (PubMed:11146660, PubMed:11590237, PubMed:15824131). Its function related to the spindle assembly machinery is proposed to depend on its association in the mitotic RZZ complex.

Cellular Location

Cytoplasm. Nucleus. Chromosome, centromere, kinetochore. Cytoplasm, cytoskeleton, spindle. Note=Dynamic pattern of localization during the cell cycle. At interphase, uniformly distributed throughout the cytoplasm and nucleus. By prophase and until late stages of prometaphase, a fraction of the total pool is concentrated at kinetochores. By metaphase, detected at kinetochores, along spindle fibers and most prominently at the poles. By late anaphase until the end of telophase, no longer detectable on kinetochores or along spindle fibers, but still present at the spindle poles

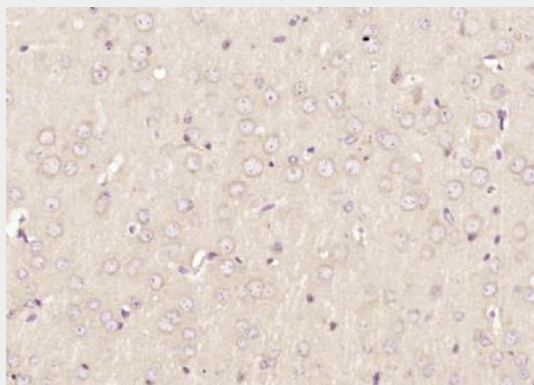
Tissue Location

High expression in testis.

KNTC1 Polyclonal Antibody - Protocols

Provided below are standard protocols that you may find useful for product applications.

- [Western Blot](#)
- [Blocking Peptides](#)
- [Dot Blot](#)
- [Immunohistochemistry](#)
- [Immunofluorescence](#)
- [Immunoprecipitation](#)
- [Flow Cytometry](#)
- [Cell Culture](#)

KNTC1 Polyclonal Antibody - Images

Paraformaldehyde-fixed, paraffin embedded (mouse brain); Antigen retrieval by boiling in sodium citrate buffer (pH6.0) for 15min; Block endogenous peroxidase by 3% hydrogen peroxide for 20 minutes; Blocking buffer (normal goat serum) at 37°C for 30min; Antibody incubation with (KNTC1) Polyclonal Antibody, Unconjugated (bs-7808R) at 1:200 overnight at 4°C, followed by operating according to SP Kit(Rabbit) (sp-0023) instructions and DAB staining.