

SKA3 Polyclonal Antibody
Purified Rabbit Polyclonal Antibody (Pab)
Catalog # AP58774**Specification****SKA3 Polyclonal Antibody - Product Information**

Application	WB, IHC-P, IHC-F, IF, E
Primary Accession	Q8IX90
Reactivity	Rat, Bovine
Host	Rabbit
Clonality	Polyclonal
Calculated MW	46 KDa
Physical State	Liquid
Immunogen	KLH conjugated synthetic peptide derived from human SKA3
Epitope Specificity	201-300/412
Isotype	IgG
Purity	
affinity purified by Protein A	
Buffer	0.01M TBS (pH7.4) with 1% BSA, 0.02% Proclin300 and 50% Glycerol.
SUBCELLULAR LOCATION	Cytoplasm, cytoskeleton, spindle.Chromosome, centromere, kinetochore. Note=Localizes to the outerkinetochore and spindle microtubules during mitosis in a NDC80complex-dependent manner. Belongs to the SKA3 family.
SIMILARITY	Component of the SKA1 complex, composed of SKA1, SKA2 andSKA3. The core SKA1 complex is composed of 2 SKA1-SKA2heterodimers, each heterodimer interacting with a molecule of theSKA3 homodimer. The core SKA1 complex associates with microtubulesand forms oligomeric assemblies. Interacts directly with SKA1.
SUBUNIT	
Important Note	This product as supplied is intended for research use only, not for use in human, therapeutic or diagnostic applications.

Background Descriptions

Component of the SKA1 complex, a microtubule-binding subcomplex of the outer kinetochore that is essential for proper chromosome segregation. The SKA1 complex is a direct component of the kinetochore-microtubule interface and directly associates with microtubules as oligomeric assemblies. The complex facilitates the processive movement of microspheres along a microtubule in a depolymerization-coupled manner. In the complex, it mediates the microtubule-stimulated oligomerization.

SKA3 Polyclonal Antibody - Additional Information

Gene ID 221150

Other Names

Spindle and kinetochore-associated protein 3, SKA3, C13orf3, RAMA1

Dilution

WB~1:1000
IHC-P~N/A
IHC-F~N/A
IF~1:50~200
E~N/A

Format

0.01M TBS(pH7.4), 0.09% (W/V) sodium azide and 50% Glyce

Storage

Store at -20 °C for one year. Avoid repeated freeze/thaw cycles. When reconstituted in sterile pH 7.4 0.01M PBS or diluent of antibody the antibody is stable for at least two weeks at 2-4 °C.

SKA3 Polyclonal Antibody - Protein Information

Name SKA3

Synonyms C13orf3, RAMA1

Function

Component of the SKA1 complex, a microtubule-binding subcomplex of the outer kinetochore that is essential for proper chromosome segregation (PubMed:[19289083](http://www.uniprot.org/citations/19289083), PubMed:[19360002](http://www.uniprot.org/citations/19360002), PubMed:[23085020](http://www.uniprot.org/citations/23085020)). The SKA1 complex is a direct component of the kinetochore-microtubule interface and directly associates with microtubules as oligomeric assemblies (PubMed:[19289083](http://www.uniprot.org/citations/19289083), PubMed:[19360002](http://www.uniprot.org/citations/19360002)). The complex facilitates the processive movement of microspheres along a microtubule in a depolymerization-coupled manner (PubMed:[19289083](http://www.uniprot.org/citations/19289083)). In the complex, it mediates the microtubule-stimulated oligomerization (PubMed:[19289083](http://www.uniprot.org/citations/19289083)). Affinity for microtubules is synergistically enhanced in the presence of the ndc-80 complex and may allow the ndc-80 complex to track depolymerizing microtubules (PubMed:[23085020](http://www.uniprot.org/citations/23085020)).

Cellular Location

Cytoplasm, cytoskeleton, spindle. Chromosome, centromere, kinetochore Note=Localizes to the outer kinetochore and spindle microtubules during mitosis in a NDC80 complex-dependent manner

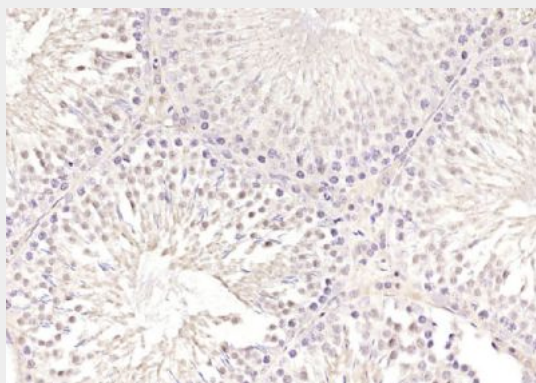
SKA3 Polyclonal Antibody - Protocols

Provided below are standard protocols that you may find useful for product applications.

- [Western Blot](#)

- [Blocking Peptides](#)
- [Dot Blot](#)
- [Immunohistochemistry](#)
- [Immunofluorescence](#)
- [Immunoprecipitation](#)
- [Flow Cytometry](#)
- [Cell Culture](#)

SKA3 Polyclonal Antibody - Images



Paraformaldehyde-fixed, paraffin embedded (rat testis); Antigen retrieval by boiling in sodium citrate buffer (pH6.0) for 15min; Block endogenous peroxidase by 3% hydrogen peroxide for 20 minutes; Blocking buffer (normal goat serum) at 37°C for 30min; Antibody incubation with (SKA3) Polyclonal Antibody, Unconjugated (bs-7848R) at 1:200 overnight at 4°C, followed by operating according to SP Kit(Rabbit) (sp-0023) instructions and DAB staining.