

CLK3 Polyclonal Antibody
Purified Rabbit Polyclonal Antibody (Pab)
Catalog # AP58794**Specification**

CLK3 Polyclonal Antibody - Product Information

Application	IHC-P, WB
Primary Accession	P49761
Reactivity	Rat, Pig, Dog, Bovine
Host	Rabbit
Clonality	Polyclonal
Calculated MW	73515

CLK3 Polyclonal Antibody - Additional Information**Gene ID** 1198**Other Names**

Dual specificity protein kinase CLK3, 2.7.12.1, CDC-like kinase 3, CLK3

Format

0.01M TBS(pH7.4), 0.09% (W/V) sodium azide and 50% Glyce

Storage

Store at -20 °C for one year. Avoid repeated freeze/thaw cycles. When reconstituted in sterile pH 7.4 0.01M PBS or diluent of antibody the antibody is stable for at least two weeks at 2-4 °C.

CLK3 Polyclonal Antibody - Protein Information**Name** CLK3**Function**

Dual specificity kinase acting on both serine/threonine and tyrosine-containing substrates. Phosphorylates serine- and arginine- rich (SR) proteins of the spliceosomal complex. May be a constituent of a network of regulatory mechanisms that enable SR proteins to control RNA splicing and can cause redistribution of SR proteins from speckles to a diffuse nucleoplasmic distribution. Phosphorylates SRSF1 and SRSF3. Regulates the alternative splicing of tissue factor (F3) pre-mRNA in endothelial cells.

Cellular Location

[Isoform 1]: Nucleus. Cytoplasm. Cytoplasmic vesicle, secretory vesicle, acrosome

Tissue Location

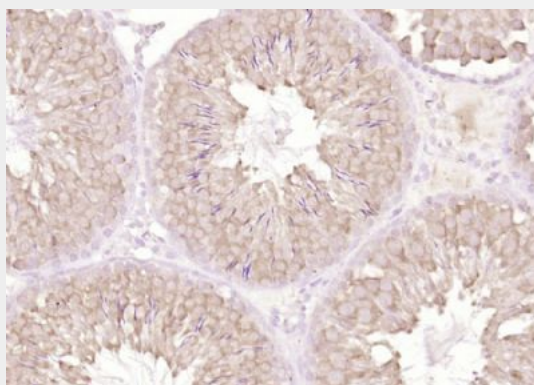
Endothelial cells..

CLK3 Polyclonal Antibody - Protocols

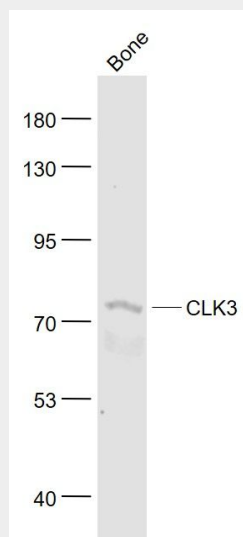
Provided below are standard protocols that you may find useful for product applications.

- [Western Blot](#)
- [Blocking Peptides](#)
- [Dot Blot](#)
- [Immunohistochemistry](#)
- [Immunofluorescence](#)
- [Immunoprecipitation](#)
- [Flow Cytometry](#)
- [Cell Culture](#)

CLK3 Polyclonal Antibody - Images



Paraformaldehyde-fixed, paraffin embedded (rat testis); Antigen retrieval by boiling in sodium citrate buffer (pH6.0) for 15min; Block endogenous peroxidase by 3% hydrogen peroxide for 20 minutes; Blocking buffer (normal goat serum) at 37°C for 30min; Antibody incubation with (CLK3) Polyclonal Antibody, Unconjugated (bs-7908R) at 1:200 overnight at 4°C, followed by operating according to SP Kit(Rabbit) (sp-0023) instructions and DAB staining.



Sample:

Bone (Mouse) Lysate at 40 ug

Primary: Anti- CLK3 (bs-7908R) at 1/1000 dilution

Secondary: IRDye800CW Goat Anti-Rabbit IgG at 1/20000 dilution

Predicted band size: 73 kD

Observed band size: 73 kD