

## CA7 Polyclonal Antibody

### Purified Rabbit Polyclonal Antibody (Pab)

Catalog # AP58822

## Specification

### CA7 Polyclonal Antibody - Product Information

Application	WB, IHC-P, IHC-F, IF, E
Primary Accession	<a href="#">P43166</a>
Reactivity	Rat, Dog, Bovine
Host	Rabbit
Clonality	Polyclonal
Calculated MW	30 KDa
Physical State	Liquid
Immunogen	KLH conjugated synthetic peptide derived from human CA7
Epitope Specificity	86-150/264
Isotype	IgG
<b>Purity</b>	
affinity purified by Protein A	
Buffer	0.01M TBS (pH7.4) with 1% BSA, 0.02% Proclin300 and 50% Glycerol.
SUBCELLULAR LOCATION	Cytoplasm (Probable).
SIMILARITY	Belongs to the alpha-carbonic anhydrase family.
Important Note	This product as supplied is intended for research use only, not for use in human, therapeutic or diagnostic applications.

### Background Descriptions

Carbonic anhydrases are a large family of zinc metalloenzymes that catalyze the reversible hydration of carbon dioxide. They participate in a variety of biological processes, including respiration, calcification, acid-base balance, bone resorption, and the formation of aqueous humor, cerebrospinal fluid, saliva, and gastric acid. They show extensive diversity in tissue distribution and in their subcellular localization. The cytosolic protein encoded by this gene is predominantly expressed in the salivary glands. Alternative splicing in the coding region results in multiple transcript variants encoding different isoforms. [provided by RefSeq, Jul 2008].

### CA7 Polyclonal Antibody - Additional Information

**Gene ID** 766

#### Other Names

Carbonic anhydrase 7, 4.2.1.1, Carbonate dehydratase VII, Carbonic anhydrase VII, CA-VII, CA7

#### Dilution

<span class = "dilution\_WB">WB ~ 1:1000</span><br \><span class = "dilution\_IHC-P">IHC-P ~ N/A</span><br \><span class = "dilution\_IHC-F">IHC-F ~ N/A</span><br \><span class = "dilution\_IF">IF ~ 1:50 ~ 200</span><br \><span class = "dilution\_E">E ~ N/A</span>

**Storage**

Store at -20 °C for one year. Avoid repeated freeze/thaw cycles. When reconstituted in sterile pH 7.4 0.01M PBS or diluent of antibody the antibody is stable for at least two weeks at 2-4 °C.

**CA7 Polyclonal Antibody - Protein Information**

**Name** CA7

**Function**

Reversible hydration of carbon dioxide.

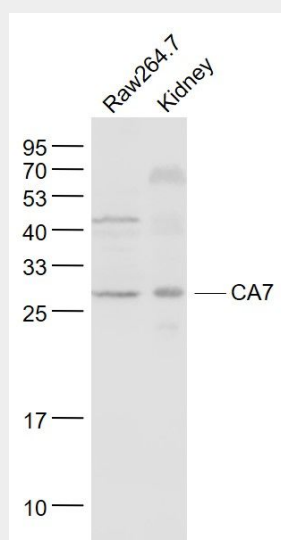
**Cellular Location**

Cytoplasm.

**CA7 Polyclonal Antibody - Protocols**

Provided below are standard protocols that you may find useful for product applications.

- [Western Blot](#)
- [Blocking Peptides](#)
- [Dot Blot](#)
- [Immunohistochemistry](#)
- [Immunofluorescence](#)
- [Immunoprecipitation](#)
- [Flow Cytometry](#)
- [Cell Culture](#)

**CA7 Polyclonal Antibody - Images****Sample:**

Raw264.7(Mouse) Cell Lysate at 30 ug

Kidney (Mouse) Lysate at 40 ug

Primary: Anti- CA7 (bs-7984R) at 1/1000 dilution

Secondary: IRDye800CW Goat Anti-Rabbit IgG at 1/20000 dilution

Predicted band size: 30 kD

Observed band size: 30 kD